



MBS-1214VDAS Metal Band saw

**MBS-1214VDAS... 50000446T
3~400V, 50Hz**

PARTS LIST

JPW Tool Group Hong Kong Limited

98 Granville Road, Tsimshatsui East, Kowloon, Hong Kong, PRC

www.jettools.com

Импортер в РФ: ООО «ИТА Технолоджи»

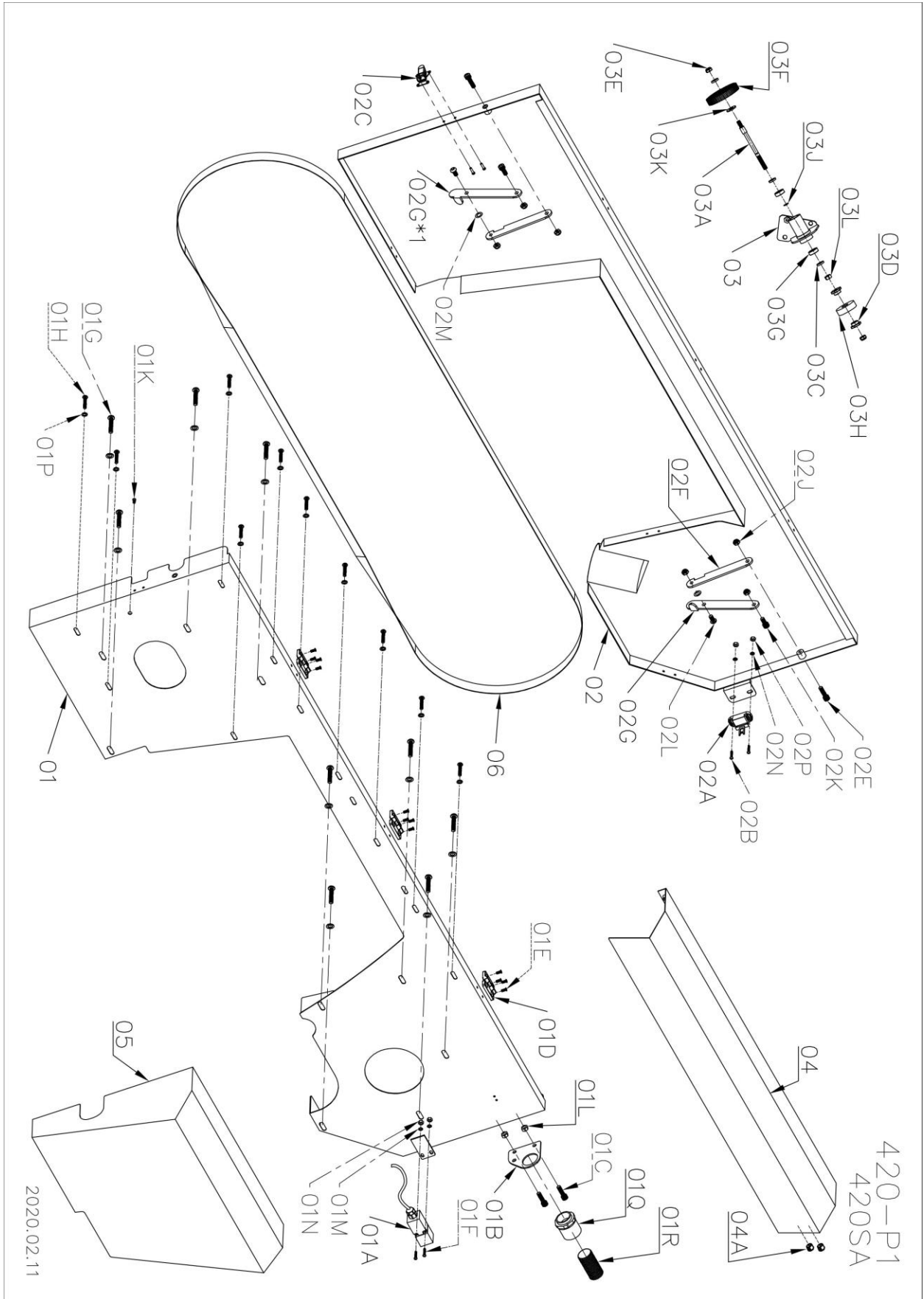
105082, Москва, Переведеновский пер., д. 17

www.jettools.ru

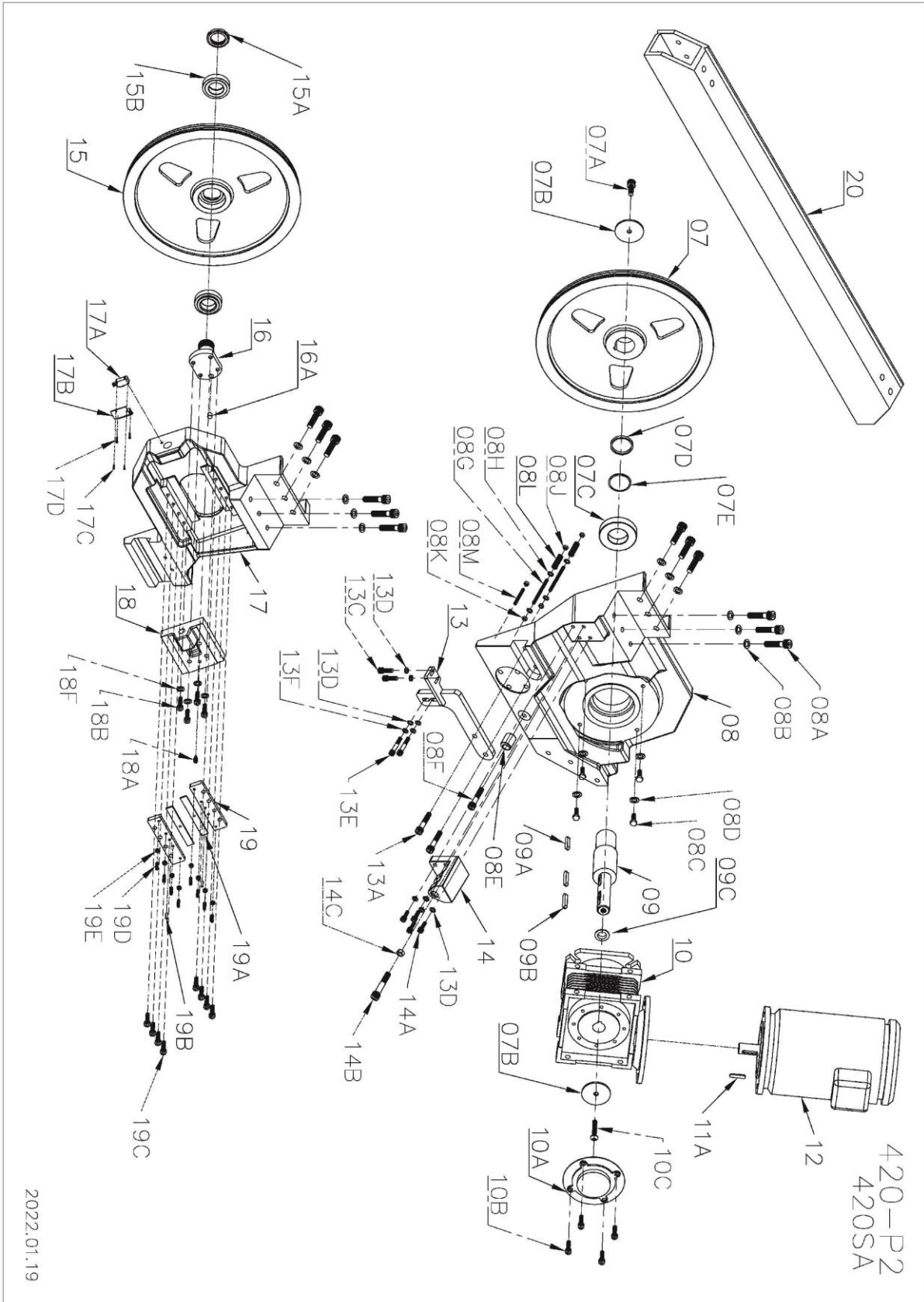


Made in Taiwan / Сделано на Тайване

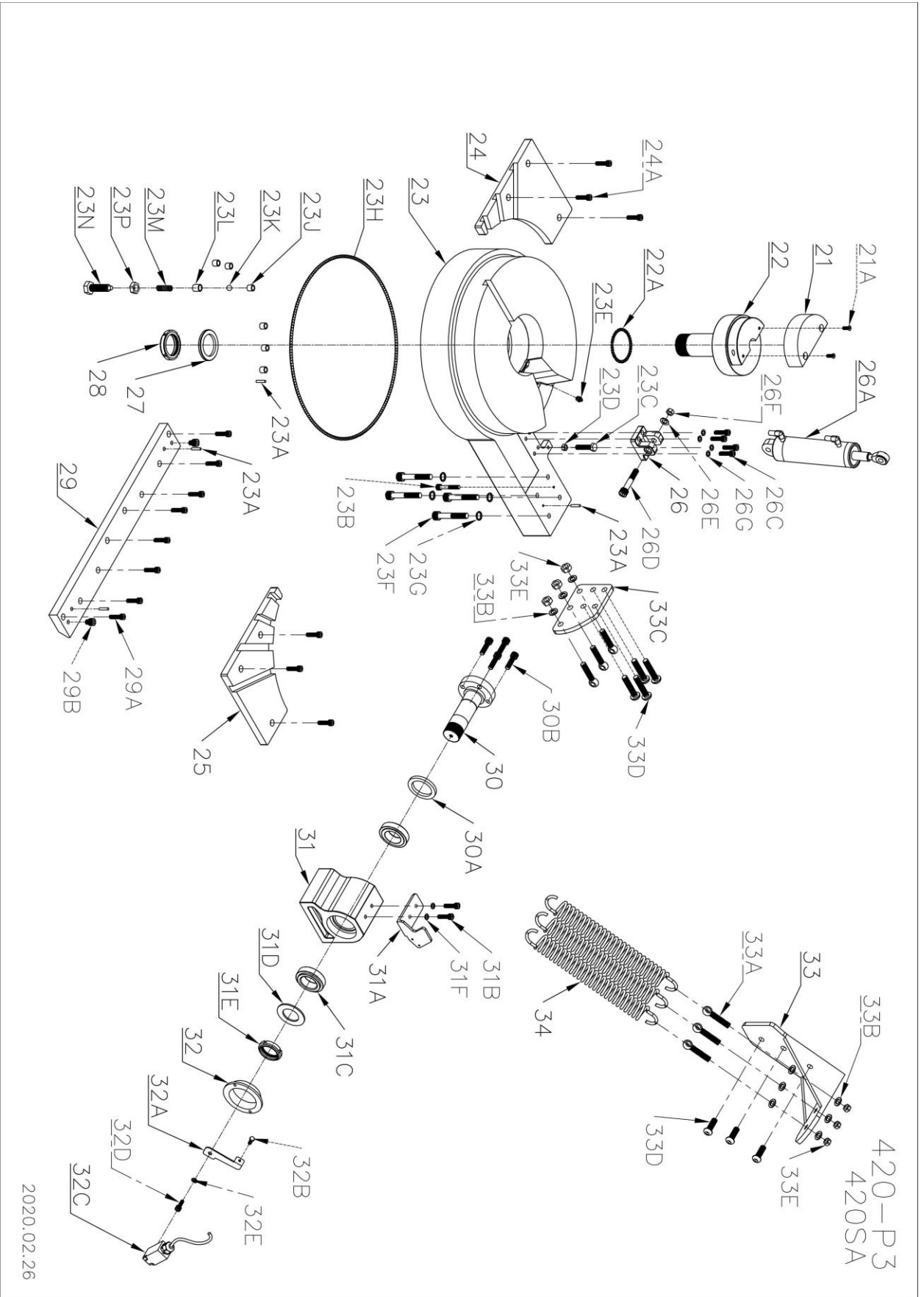
Breakdown for the MBS1214VDAS Bow Assembly



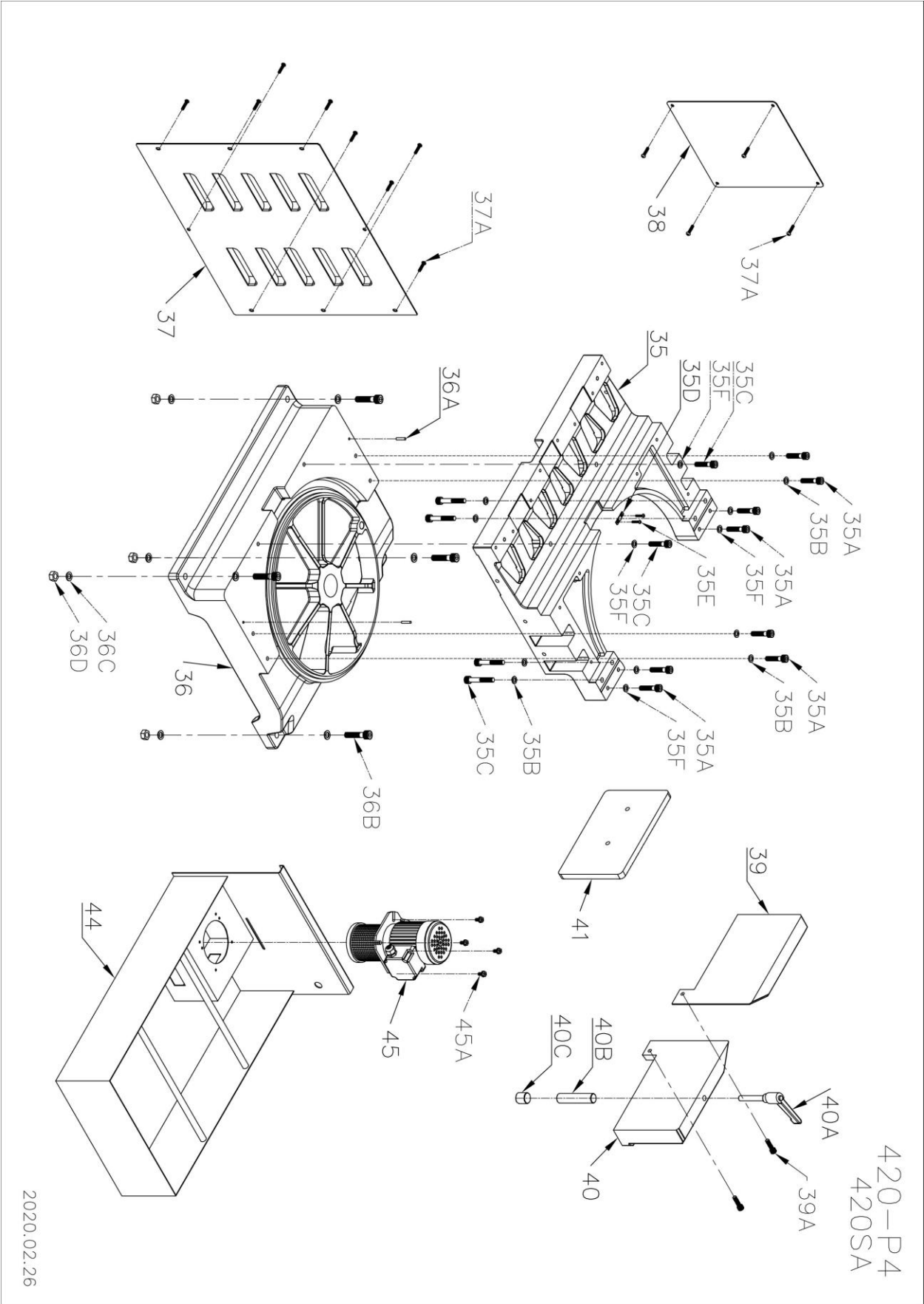
Breakdown for the MBS1214VDAS Bow Assembly



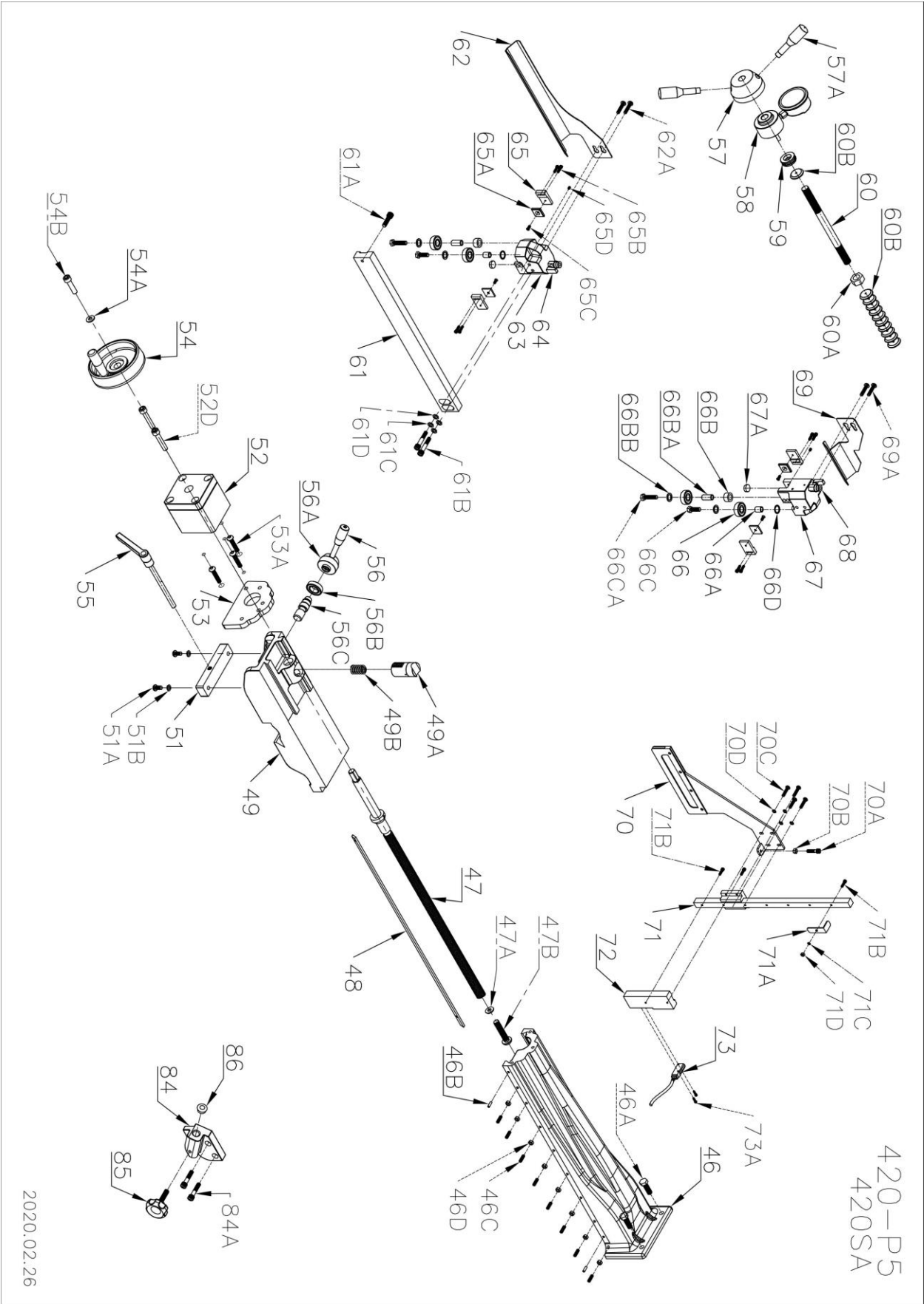
MBS1416VDAS Breakdown for Transmission Stand Assembly



Breakdown for the MBS1214VDAS Transmission Base Assembly



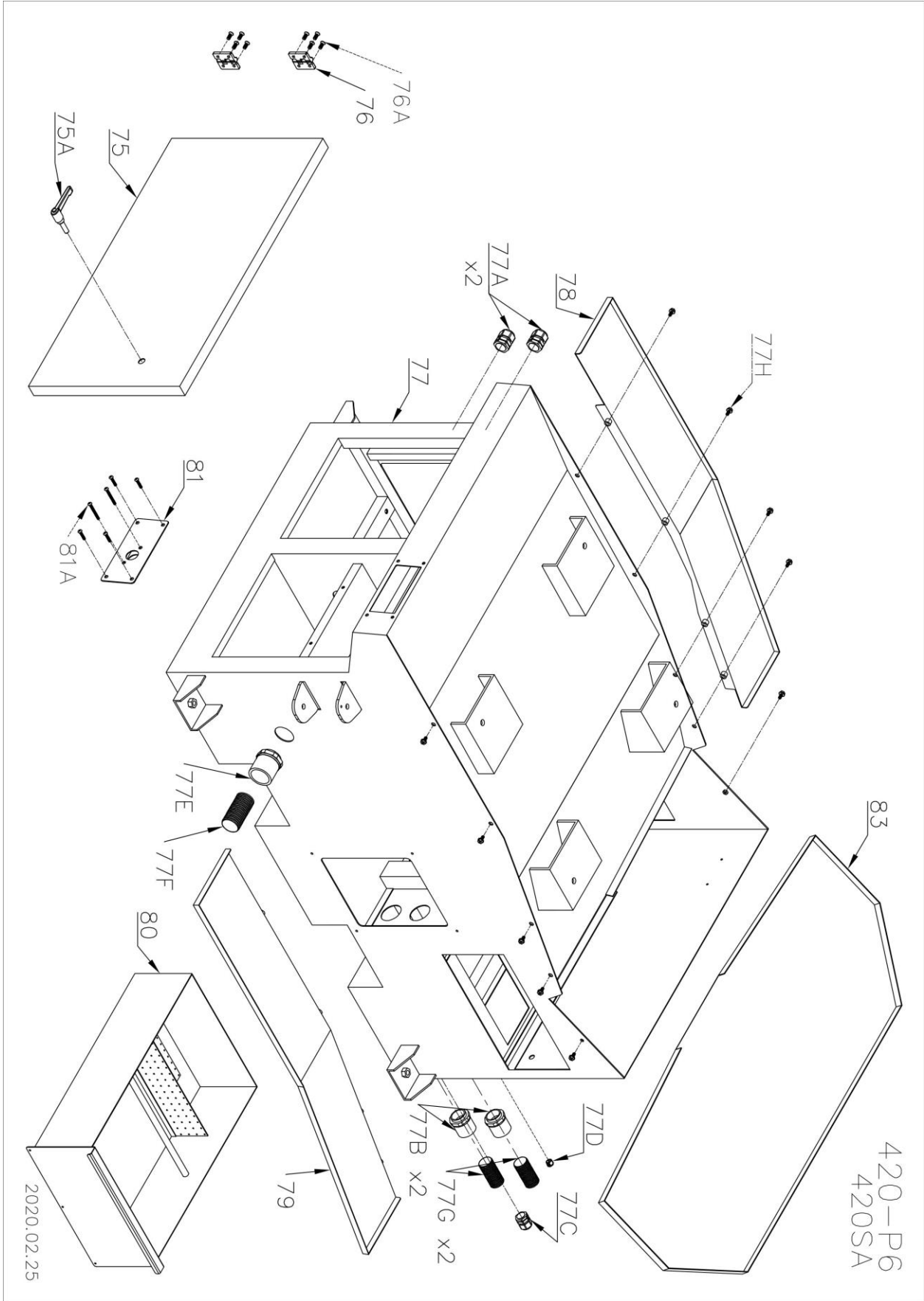
Breakdown for the MBS1214VDAS Vise Assembly



420-P5
420SA

2020.02.26

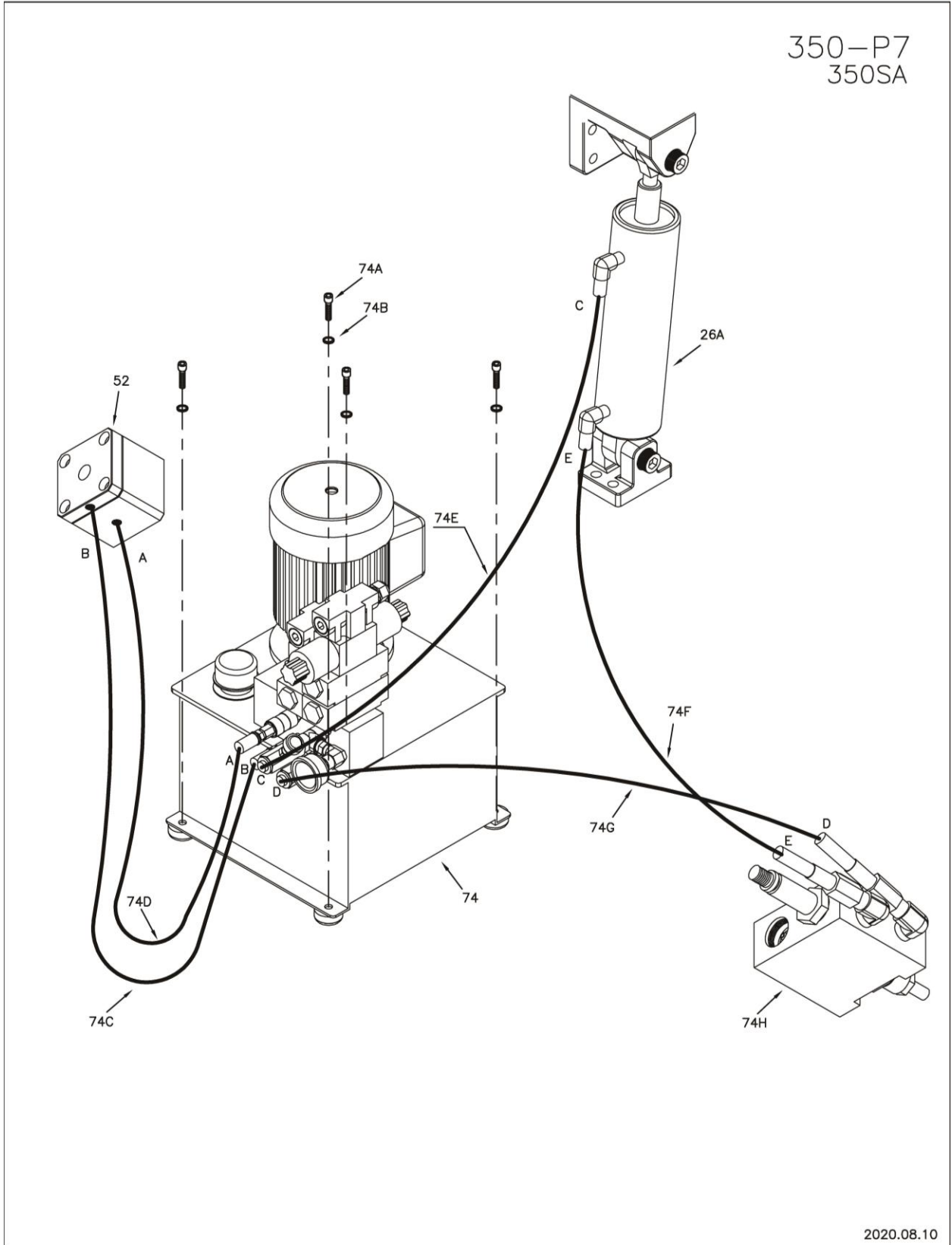
Breakdown for the MBS1214VDAS Base Assembly



2020.02.25

Breakdown for the MBS1214VDAS Pump Assembly

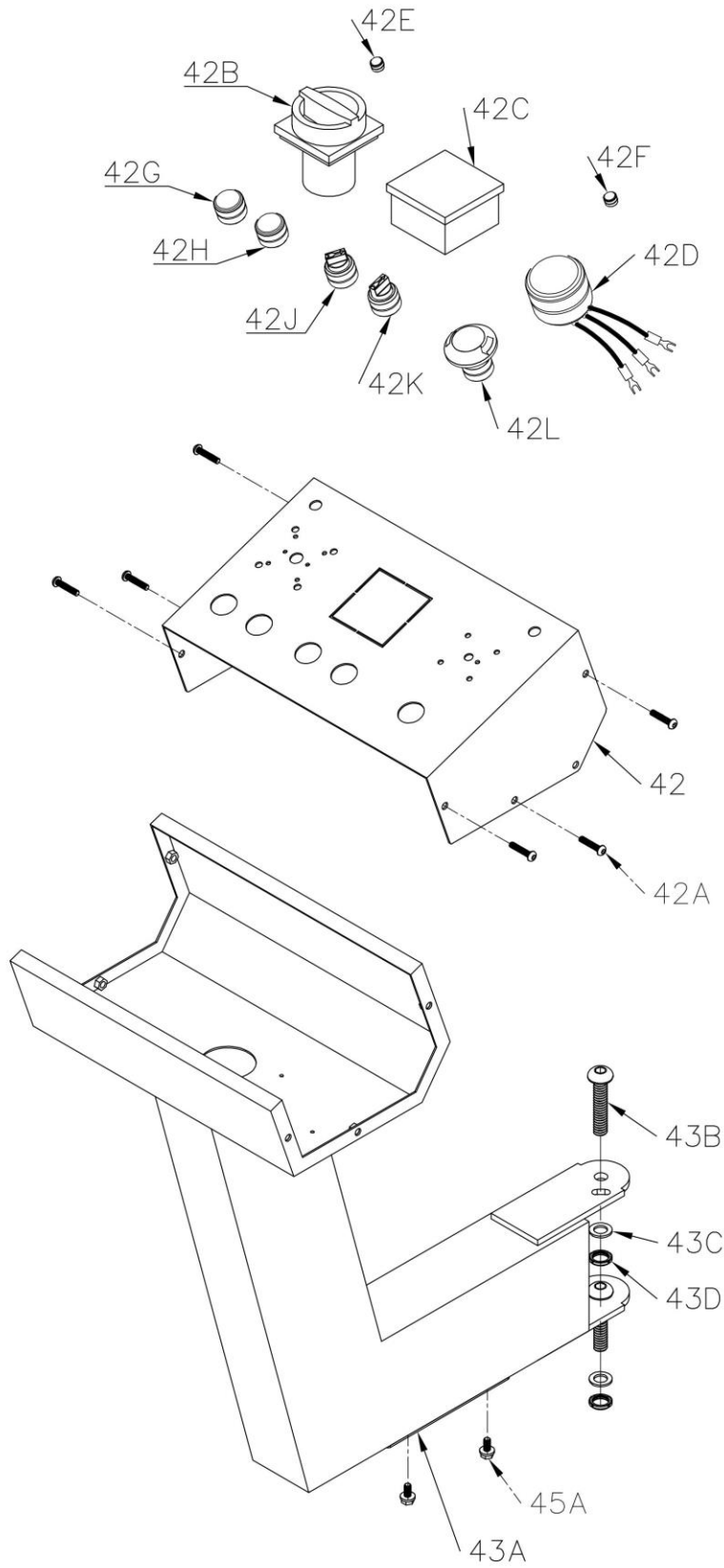
350-P7
350SA



2020.08.10

Breakdown for HBS-1214DAS Electrical assembly

420-P8
420SAI



Parts List for the MBS1214VDAS

Index No.	Part No.	Description	Size	Qty.
1.....	MBS1416VDAS-001	Cover(Saw bow)		1
01A	MBS1416VDAS-001A	limit Switch		1
01B	MBS1416VDAS-001B	Wire fixing plate		1
01C	MBS1416VDAS-001C	Socket Head Cap Screw	M8x16	2
01D	MBS1416VDAS-001D	Zinc alloy hinge	AZ-2510B	3
01E	MBS1416VDAS-001E	Screw	M6x16	12
01F.....	MBS1416VDAS-001F	Socket Head Cap Screw	M4x30	2
01G	MBS1416VDAS-001G	Socket Head Cap Screw	M8x12	9
01H	MBS1416VDAS-001H	Socket Head Cap Screw	M6x12	10
01K	MBS1416VDAS-001K	Screw	M4x12	1
01L.....	MBS1416VDAS-001L	Nut	M4	2
01M.....	MBS1416VDAS-001M	Washer	M6	2
01N.....	MBS1416VDAS-001N	Nut		2
01P	MBS1416VDAS-001P	Washer		10
2.....	MBS1416VDAS-002	Cover		1
02A	MBS1416VDAS-002A	Switch holder		1
02B	MBS1416VDAS-002B	Cap Screw	M4x15	1
02C	MBS1416VDAS-002C	Fixed hook		1
02D	MBS1416VDAS-002D	Rivet		20
02E	MBS1416VDAS-002E	Hex. Socket Head Screw	M8X35	2
02F.....	MBS1416VDAS-002F	Crank support		2
02G	MBS1416VDAS-002G	Crank support		1
02G-1...	MBS1416VDAS-002G-1	Crank support	20x25	1
02J.....	MBS1416VDAS-002J	Nut	M8	6
02K	MBS1416VDAS-002K	Hex. Socket Head Screw	M8x25	2
02L.....	MBS1416VDAS-002L	Hex. Socket Head Screw	M8x20	2
02M.....	MBS1416VDAS-002M	Washer	M8x0.5t	2
02N.....	MBS1416VDAS-002N	Washer	M4	2
02P	MBS1416VDAS-002P	Nut	M4	2
3.....	MBS1416VDAS-003	Brush Assembly		1
03A	MBS1416VDAS-003A	Brown Brush Spindle Screw	M8	1
03C	MBS1416VDAS-003C	Gasket	1.5Tx16x8.3	3
03D	MBS1416VDAS-003D	Rubber Holder		2
03E	MBS1416VDAS-003E	Nut	M8	2
03F.....	MBS1416VDAS-003F	Metal Wire Brush		1
03G	MBS1416VDAS-003G	Bearing	6082RS	1
03H	MBS1416VDAS-003H	PU Gasket		2
03J.....	MBS1416VDAS-003J	C Ring		1
03K	MBS1416VDAS-003K	Gasket	2T*23*10.5	1
03L.....	MBS1416VDAS-003L	Nut	M8	1
4.....	MBS1416VDAS-004	Upper Cover		1
04A	MBS1416VDAS-004A	Hollow Bolt		2
5.....	MBS1416VDAS-005	Upper Cover(left)		1
6.....	MBS1214VDAS-006	Saw Blade		1
7.....	MBS1416VDAS-007	Driving Wheel		1
07A	MBS1416VDAS-007A	Socket Head Cap Screw	M12*30	1
07B	MBS1416VDAS-007B	Spindle Bearing Gasket	4T*60*12.5	2
07C	MBS1416VDAS-007C	Spindle Bearing		1
07D	MBS1416VDAS-007D	Gasket	6T*56*45.5	1
07E	MBS1416VDAS-007E	Gasket	2T*56*45.5	1

Parts List for the MBS1214VDAS

Index No.	Part No.	Description	Size	Qty.
8	MBS1416VDAS-008	Saw Bow(Right)		1
08A	MBS1416VDAS-008A	Socket Head Cap Screw	M12x35	12
08B	MBS1416VDAS-008B	Washer	M12	12
08C	MBS1416VDAS-008C	Screw		4
08D	MBS1416VDAS-008D	Washer	M10	4
08E	MBS1416VDAS-008E	Height Fixing Sleeve	M10	1
08F	MBS1416VDAS-008F	Socket Head Cap Screw	M10x30	1
08G	MBS1416VDAS-008G	Socket Head Flat Screw	M8*90	2
08H	MBS1416VDAS-008H	Washer	M8	4
08J	MBS1416VDAS-008J	Nut	M8	2
08K	MBS1416VDAS-008K	Nut		3
08L	MBS1416VDAS-008L	Spring		2
08M	MBS1416VDAS-008M	Socket Head Flat Screw	M8x35L	1
09	MBS1214VDAS-009	Driving wheel mandrel	53*74	1
09A	MBS1416VDAS-009A	Key		1
09B	MBS1416VDAS-009B	Key		2
09C	MBS1416VDAS-009B	Washer		1
10	MBS1214VDAS-010	Gear box (including flange)	FCNDK090	1
10A	MBS1214VDAS-010A	Flange Cover		1
10B	MBS1416VDAS-010B	Socket Head Cap Screw		4
11A	MBS1416VDAS-011A	Key	6*6*30	1
12	MBS1416VDAS-012	Motor		1
13	MBS1416VDAS-013	Saw band fixing plate		1
13A	MBS1416VDAS-013A	Socket Head Cap Screw	M10*30	2
13B	MBS1416VDAS-013B	Washer	M10	2
13C	MBS1416VDAS-013C	Socket Head Cap Screw		2
13D	MBS1416VDAS-013D	Washer		8
13E	MBS1416VDAS-013E	Socket Head Cap Screw	M8*35	2
13F	MBS1416VDAS-013F	Spring Washer		6
14	MBS1416VDAS-014	Cylinder Support Shaft		1
14A	MBS1416VDAS-014A	Socket Head Cap Screw	M8*30L	1
14B	MBS1416VDAS-014B	Socket Head Cap Screw	M12*65L	1
14C	MBS1416VDAS-014C	Nut	M12	1
15	MBS1416VDAS-015	Driven wheel		1
15A	MBS1416VDAS-015A	Nylon Nut		1
15B	MBS1416VDAS-015B	Roller bearing		2
16	MBS1416VDAS-016	Driven wheel mandrel	80x74	1
16A	MBS1416VDAS-016A	Bar	10x10	1
17	MBS1416VDAS-017	Saw Bow		1
17A	MBS1416VDAS-017A	Switch		1
17B	MBS1416VDAS-017B	Switch		2
17C	MBS1416VDAS-017C	Socket Head Cap Screw	M3x12L	2
17D	MBS1416VDAS-017D	Socket Head Cap Screw	M4x8L	1
18	MBS1416VDAS-018	Slider		1
18A	MBS1416VDAS-018A	Socket Head Cap Screw	M8x20L	1
18B	MBS1416VDAS-018B	Socket Head Cap Screw	M8x40L	4
19	MBS1416VDAS-019	Slider plate		1
19A	MBS1416VDAS-019	Slide fixing Plate		2
19B	MBS1416VDAS-019B	Spring Pin		8
19C	MBS1416VDAS-019C	Socket Head Cap Screw		8
19D	MBS1416VDAS-019D	Socket Head Flat Screw		8
19E	MBS1416VDAS-019E	Nut	M6	8
20	MBS1416VDAS-020	Connecting Rod	M8 x 20	1

Parts List for the MBS1214VDAS

Index No.	Part No.	Description	Size	Qty.
21	MBS1416VDAS-21	Rotary Seat Center Cover		1
21A	MBS1416VDAS-021A	Screw		2
22	MBS1416VDAS-022	Fixed mandrel		1
22A	MBS1416VDAS-02A	Steel needle		38
23	MBS1416VDAS-023	Swivel seat		1
23A	MBS1416VDAS-023A	Bolt	Ø8x25L	4
23B	MBS1416VDAS-023B	Socket Head Cap Screw	M8X25L	1
23C	MBS1416VDAS-023C	Screw	M10x40L	1
23D	MBS1416VDAS-023D	Nut	M10	1
23E	MBS1416VDAS-023E	Nozzle		1
23F	MBS1416VDAS-023F	Socket Head Cap Screw	M12x30	4
23G	MBS1416VDAS-023G	Spring Washer	M12	4
23H	MBS1416VDAS-023H	Steel Ball	Ø6x6	210
23J	MBS1416VDAS-023J	Steel Sleeve	Ø10*Ø14*12	6
23K	MBS1416VDAS-023K	Steel ball	Ø12	1
23L	MBS1416VDAS-023L	Steel Sleeve	Ø12*Ø16*12	1
23M	MBS1416VDAS-023M	Base Spring	30*1.6*2.8	6
23N	MBS1416VDAS-023N	Nut	M14*50L	1
23P	MBS1416VDAS-023P	Nut	M14x8T	1
24	MBS1416VDAS-024	Vise Support plate(left)		1
24A	MBS1416VDAS-024A	Hex Cap Screw	M8x25	6
25	MBS1416VDAS-025	Support plate		1
26	MBS1416VDAS-026	Bracket		1
26A	MBS1416VDAS-026A	Hydraulic cylinder		1
26C	MBS1416VDAS-026C	Socket Head Cap Screw	M8x35L	8
26D	MBS1416VDAS-126D	Socket Head Cap Screw	M10x30L	2
26E	MBS1416VDAS-26E	Washer	M12	1
26F	MBS1416VDAS-26F	Nut	M12	1
26G	MBS1416VDAS-26G	Spring Washer	M8	4
27	MBS1416VDAS-027	Gasket	Ø75xØ51*4T	1
28	MBS1416VDAS-028	Nylon Nut		1
29	MBS1416VDAS-029	Vise Slider	65*25*620	1
29A	MBS1416VDAS-029A	Socket Head Cap Screw	M8*35L	8
29B	MBS1416VDAS-029B	Socket Head Cap Screw	M10*20L	4
30	MBS1416VDAS-030	Connecting shaft		1
30A	MBS1416VDAS-030A	Oil seal		1
30B	MBS1416VDAS-030B	Socket Head Cap Screw		4
31	MBS1416VDAS-031	Connecting seat		1
31A	MBS1416VDAS-031A	Switch		1
31B	MBS1416VDAS-031B	Socket Head Cap Screw		2
31C	MBS1416VDAS-031C	Bearing		2
31D	MBS1416VDAS-031D	Washer	3T*Ø67.5*Ø41	1
31E	MBS1416VDAS-031E	Nut	M40	1
31F	MBS1416VDAS-031F	Washer	M8	2
32	MBS1416VDAS-032	Fixed sleeve		2

Parts List for the MBS1214VDAS

Index No.	Part No.	Description	Size	Qty.
32A	MBS1416VDAS-032A	Switch		3
32B	MBS1416VDAS-032B	Hex Cap Screw	M6*16	2
32C	MBS1416VDAS-032C	Limit Switch		1
32D	MBS1416VDAS-032D	Socket Head Cap Screw	M8x16	1
32E	MBS1416VDAS-032E	Washer	M8	1
33	MBS1416VDAS-033	Spring Fixed seat		1
33A	MBS1416VDAS-033A	Spring Screw	M12*55L	6
33B	MBS1416VDAS-033B	Washer	M12	1
33C	MBS1416VDAS-033C	Washer		1
33D	MBS1416VDAS-033D	Socket Head Cap Screw	M12*30	3
33E	MBS1416VDAS-033E	Nut	M12	1
34	MBS1416VDAS-034	Spring	Ø5*Ø35*163L	1
35	MBS1416VDAS-035	Upper Base		1
35A	MBS1416VDAS-035A	Socket Head Cap Screw	M10*40L	1
35B	MBS1416VDAS-035B	Washer	M10	6
35C	MBS1416VDAS-35C	Socket Head Cap Screw	M10*60L	1
35D	MBS1416VDAS-35D	Needle Fixing plate		1
35E	MBS1416VDAS-35E	Socket Head Cap Screw	M4x8L	1
35F	MBS1416VDAS-35F	Washer	M10	1
36	MBS1416VDAS-036	Base		1
36A	MBS1416VDAS-036A	Bolt	Ø8*36L	2
36B	MBS1416VDAS-036B	Socket Head Cap Screw	M12*55L	4
36C	MBS1416VDAS-036C	Washer		8
36D	MBS1416VDAS-036D	Nut	M12	4
37	MBS1416VDAS-037	Cover		1
37A	MBS1416VDAS-37A	Socket Head Cap Screw	M6*12L	12
38	MBS1416VDAS-038	Cover		1
39	MBS1416VDAS-39	Vise Plate(left)		1
39A	MBS1416VDAS-039A	Socket Head Cap Screw	M8*25L?	2
40	MBS1416VDAS-040	Bezel		1
40A	MBS1416VDAS-040A	Knob		1
40B	MBS1416VDAS-040B	Steel Bar	Ø22*96L	1
40C	MBS1416VDAS-040C	Copper Bar	Ø25*25L	1
41	MBS1416VDAS-041	vise plate		1
42	MBS1416VDAS-042	Panel		1
42A	MBS1416VDAS-042A	Socket Head Cap Screw	M6*12L	6
42B	MBS1416VDAS-042B	Main power switch		1
42C	MBS1416VDAS-042C	Ammeter		1
42D	MBS1416VDAS-042D	Speed switch		1
42E	MBS1416VDAS-042E	Indicator light		1
42F	MBS1416VDAS-042F	Indicator light		1
42G	MBS1416VDAS-042G	Hydraulic start button		1
42H	MBS1416VDAS-042H	Cutting start button		1
42J	MBS1416VDAS-042J	Clip Selector		1
42K	MBS1416VDAS-042K	Saw bow up and down selector		1
42L	MBS1416VDAS-042L	Emergency power off switch		1
43	MBS1416VDAS-043	Bracket		1
43A	MBS1416VDAS-043A	Cover		1
43B	MBS1416VDAS-043B	Socket Head Cap Screw	M12*30	2
43C	MBS1416VDAS-043C	Washer	M12	2
43D	MBS1416VDAS-043D	Nut	M12	2
44	MBS1416VDAS-044	Water Tank Drawer		1
45	MBS1416VDAS-045	Pump		1

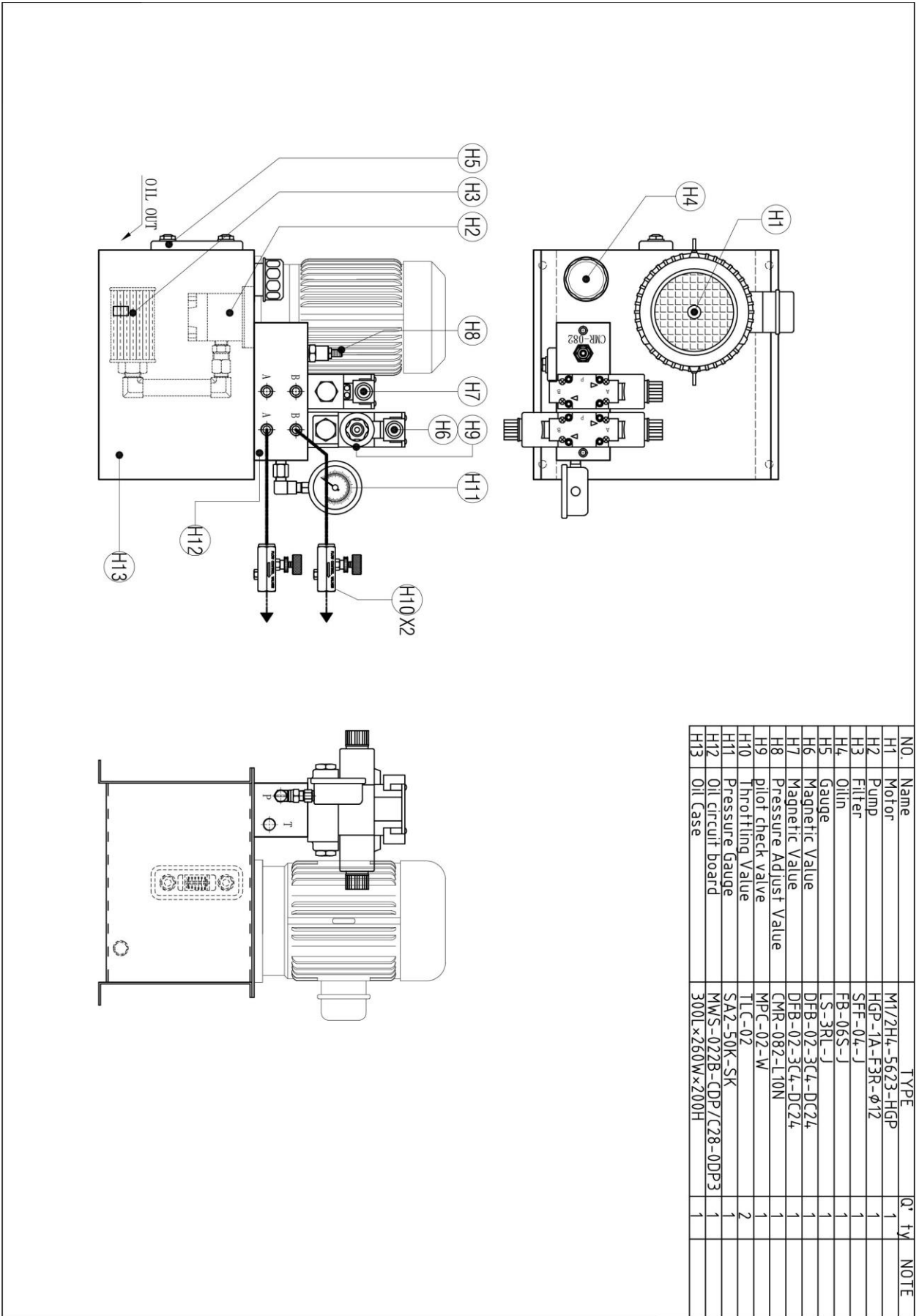
Parts List for the MBS1214VDAS

Index No.	Part No.	Description	Size	Qty.
45A	MBS1416VDAS-045A	Screw	M6*12L	6
46	MBS1214VDAS-046	Vise Cover		1
46A	MBS1416VDAS-046A	Screw	M10*25L	2
46B	MBS1416VDAS-046B	Spring Pin	Ø5*18	2
46C	MBS1416VDAS-046C	Socket Head Flat Screw	M6*20L	8
46D	MBS1416VDAS-046D	Nut	M6	8
47	MBS1214VDAS-047	Screw for vise		1
47A	MBS1416VDAS-047A	Washer	M8	1
47B	MBS1416VDAS-047B	Socket Head Cap Screw	M8*12	2
48	MBS1416VDAS-048	Steel plate		1
49	MBS1214VDAS-049	Moveable Vise		1
49A	MBS1416VDAS-049A	Copper Screw		1
49B	MBS1416VDAS-049B	Spring		1
51	MBS1214VDAS-051	Vise Holder	32*20*140	1
51A	MBS1416VDAS-051A	Socket Head Cap Screw	M8*30	2
51B	MBS1416VDAS-051B	Washer	M8	2
52	MBS1416VDAS-052	Hydraulic Vice Assembly		1
52D	MBS1416VDAS-052D	Socket Head Cap Screw	M10*95	2
53	MBS1214VDAS-053	Hydraulic vise fixing block		1
53A	MBS1416VDAS-053A	Socket Head Cap Screw	M8*20L	3
54	MBS1416VDAS-054	HandleWheel		4
54A	MBS1416VDAS-054A	Washer	M8	1
54B	MBS1416VDAS-054B	Socket Head Cap Screw	M8*20L	1
55	MBS1416VDAS-055	Grip		1
56	MBS1416VDAS-056	Vise handle		1
56A	MBS1416VDAS-056A	Head of handle		1
56B	MBS1416VDAS-056B	Bearing		1
56C	MBS1416VDAS-056C	Gear		1
57	MBS1416VDAS-057	Head of Handle		1
57A	MBS1416VDAS-057A	Handle		1
58	MBS1416VDAS-058	Pressure meter		2
59	MBS1416VDAS-059	Gasket		1
60	MBS1416VDAS-060	Long Screw	16*290	2
60A	MBS1416VDAS-060A	Nut	M16	2
60B	MBS1416VDAS-60B	Gasket	M16	2
61	MBS1416VDAS-060	Bracket		11
61A	MBS1416VDAS-61A	Socket Head Cap Screw	M8*12L	2
61B	MBS1416VDAS-058	Socket Head Cap Screw	M8*40L	2
61C	MBS1416VDAS-061C	Spring Washer	M8	2
61D	MBS1416VDAS-061D	Washer	M8	2
62	MBS1416VDAS-062	Blade Safe Cover		2
62A	MBS1416VDAS-062A	Socket Head Cap Screw		2
63	MBS1416VDAS-063	Rear Blade Holder		2
64	MBS1416VDAS-064	Value		1
65	MBS1214VDAS-065	Guide Block Base		1
65A	MBS1214VDAS-065A	Guide Block(upper)		4
65B	MBS1416VDAS-065B	Socket Head Cap Screw	M4*16	4
65C	MBS1416VDAS-065C	Screw	M4*16	8
65D	MBS1416VDAS-065D	Socket Head Flat Screw	M4*6L	2
66	MBS1416VDAS-066	Bearing		2

Parts List for the MBS1214VDAS

Index No.	Part No.	Description	Size	Qty.
66A	MBS1416VDAS-066A	Bearing Casing(Short)	Ø12*Ø8.5*15L	4
66B	MBS1416VDAS-066B	Value	Ø20*Ø12*13L	2
66BA	MBS1416VDAS-066BA	Bearing Casing(long)	Ø12*Ø8.5*25L	2
66BB	MBS1416VDAS-066BB	Gasket	Ø16*Ø8.2*1.5T	2
66C	MBS1416VDAS-066C	Socket Head Cap Screw	M6*25L	4
66CA	MBS1416VDAS-066CA	Socket Head Cap Screw	M6*36L	2
66D	MBS1416VDAS-066D	Washer	1T*Ø16*Ø12	2
67	MBS1416VDAS-067	Front Blade Holder		2
68	MBS1416VDAS-068	Ball valve		2
69	MBS1416VDAS-069	Protection Sheet		1
69A	MBS1416VDAS-069A	Socket Head Cap Screw	M6*12L	1
70	MBS1416VDAS-070	Location Rod		1
70A	MBS1416VDAS-070A	Socket Head Cap Screw	M6*16L	1
70B	MBS1416VDAS-070B	Nut	M6	1
70C	MBS1416VDAS-080C	Socket Head Cap Screw	M5*12L	4
70D	MBS1416VDAS-070D	Washer	M5	4
71	MBS1416VDAS-071	Location Rod		1
71A	MBS1416VDAS-071A	Bezel	M6*16L	4
71B	MBS1416VDAS-071B	Socket Head Cap Screw	M6*20	3
71C	MBS1416VDAS-071C	Washer	M6	1
71D	MBS1416VDAS-071D	Nut	M6	1
72	MBS1416VDAS-072	Connection Plate		1
73	MBS1416VDAS-073	Switch		1
73A	MBS1416VDAS-057A	Socket Head Cap Screw	M3*12L	1
74	MBS1214VDAS-074	Hydraulic Pump System Assembly		1
74A	MBS1416VDAS-074A	Socket Head Cap Screw	M8*16L	4
74B	MBS1416VDAS-074B	Washer	M8	4
75	MBS1416VDAS-075	Door		1
75A	MBS1416VDAS-075A	Handle		1
76	MBS1416VDAS-076	Hinge	AZ2510B	2
76A	MBS1416VDAS-76A	Screw	M6*16L	8
77	MBS1416VDAS-077	Base		1
77A	MBS1416VDAS-077A	Cable Holder		2
77B	MBS1416VDAS-077B	Cable Holder		2
77C	MBS1416VDAS-077C	Cable Holder		1
77D	MBS1416VDAS-077D	Hollow Bolt		1
77E	MBS1416VDAS-077E	Cable Holder		1
77F	MBS1416VDAS-077F	Telescopic wave tube		1
77G	MBS1416VDAS-077G	Telescopic wave tube		2
77H	MBS1416VDAS-077H	Socket Head Cap Screw	M6*12L	10
78	MBS1416VDAS-078	Base Plate(right)		1
79	MBS1416VDAS-079	Base Plate(left)		1
80	MBS1416VDAS-080	Base Drawer		1
81	MBS1416VDAS-081	Bracket		1
81A	MBS1416VDAS-081A	Socket Head Cap Screw	M6*25L	2
82	MBS1416VDAS-082	Drawer		1
82A	MBS1416VDAS-082A	Socket Head Cap Screw	M6*12L	6
83	MBS1416VDAS-083	Water Tray		1
84	MBS1416VDAS-084	Flexed Block	M6*25L	2
84	MBS1416VDAS-084A	Screw	M8x25L	2
85	MBS1416VDAS-085	Screw	M8*30L	1
86	MBS1416VDAS-086	Copper	6x15	1

Breakdown for the MBS1214VDAS Hydraulic Pump System Assembly

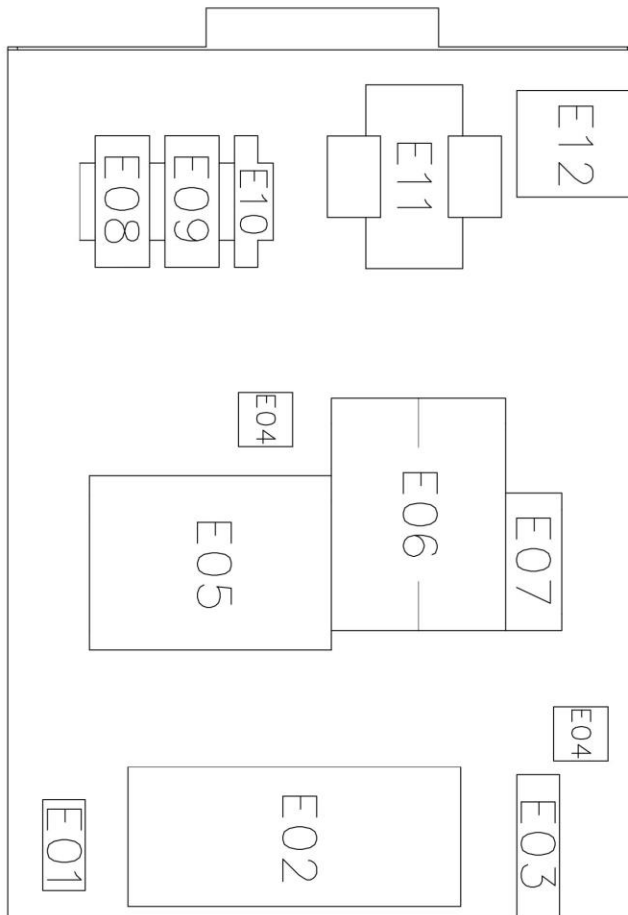
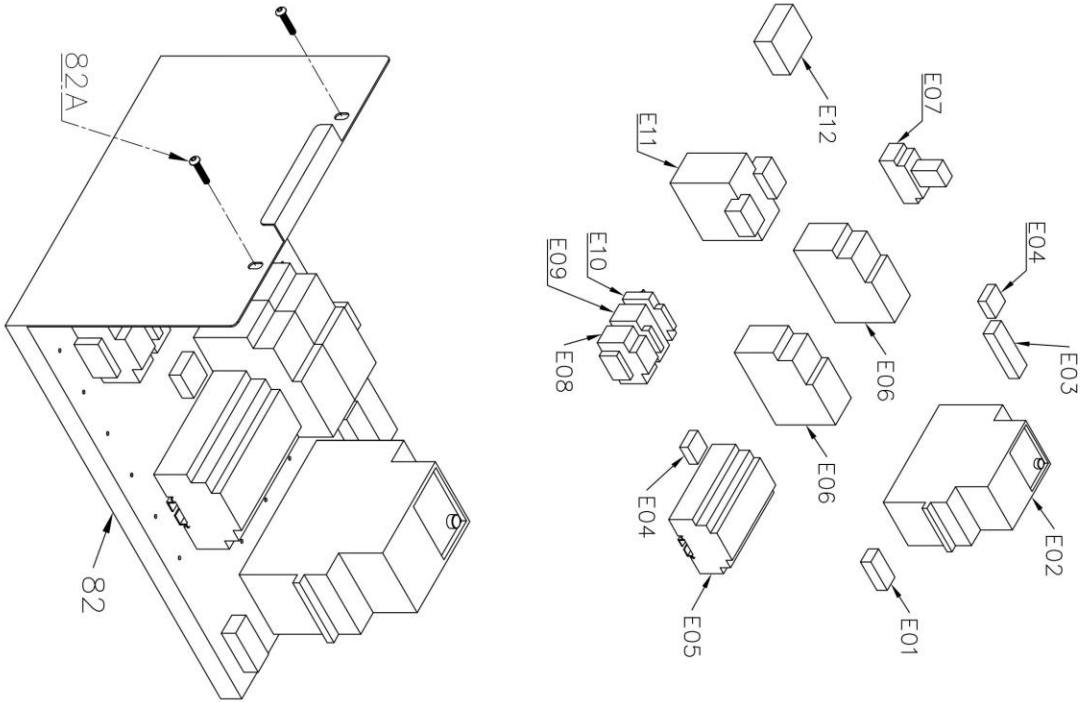


NO.	Name	TYPE	Q ^Y	TY	NOTE
H1	Motor	M1/2H4-5623-HGP	1		
H2	Pump	HGP-1A-F3R-φ12	1		
H3	Filter	SFF-04-J	1		
H4	Oilin	FB-06S-J	1		
H5	Gauge	LS-3RL-J	1		
H6	Magnetic Valve	DFB-02-3C4-DC24	1		
H7	Magnetic Valve	DFB-02-3C4-DC24	1		
H8	Pressure Adjust Value	CMR-082-L10N	1		
H9	pilot check valve	MPC-02-W	1		
H10	Throttling Value	TLC-02	2		
H11	Pressure Gauge	SA2-50K-SK	1		
H12	Oil circuit board	MWS-022B-CDP/C28-ODP3	1		
H13	Oil Case	300L×260W×200H	1		

**Parts List for the MBS1214VDAS
Electric Equipment Assembly**

Index No.	Part No.	Description	Size	Qty.
H01	MBS1214VDAS-H01	Motor		1
H02	MBS1214VDAS-H02	Pump		1
H03	MBS1214VDAS-H03	Filter		1
H04	MBS1214VDAS-H04	Oilin		1
H05	MBS1214VDAS-H05	Gauge		1
H06	MBS1214VDAS-H06	Magnetic Value		1
H07	MBS1214VDAS-H07	Magnetic Value		1
H08	MBS1214VDAS-H08	Pressure Adjust Value		1
H09	MBS1214VDAS-H09	Pilot Check Value		1
H10	MBS1214VDAS-H10	Throttling Value		2
H11	MBS1214VDAS-H11	Pressure Gauge		1
H12	MBS1214VDAS-H12	Oil Circuit		1
H13	MBS1214VDAS-H13	Oil Case		1

Breakdown for the MBS1214VDAS electric equipment Assembly

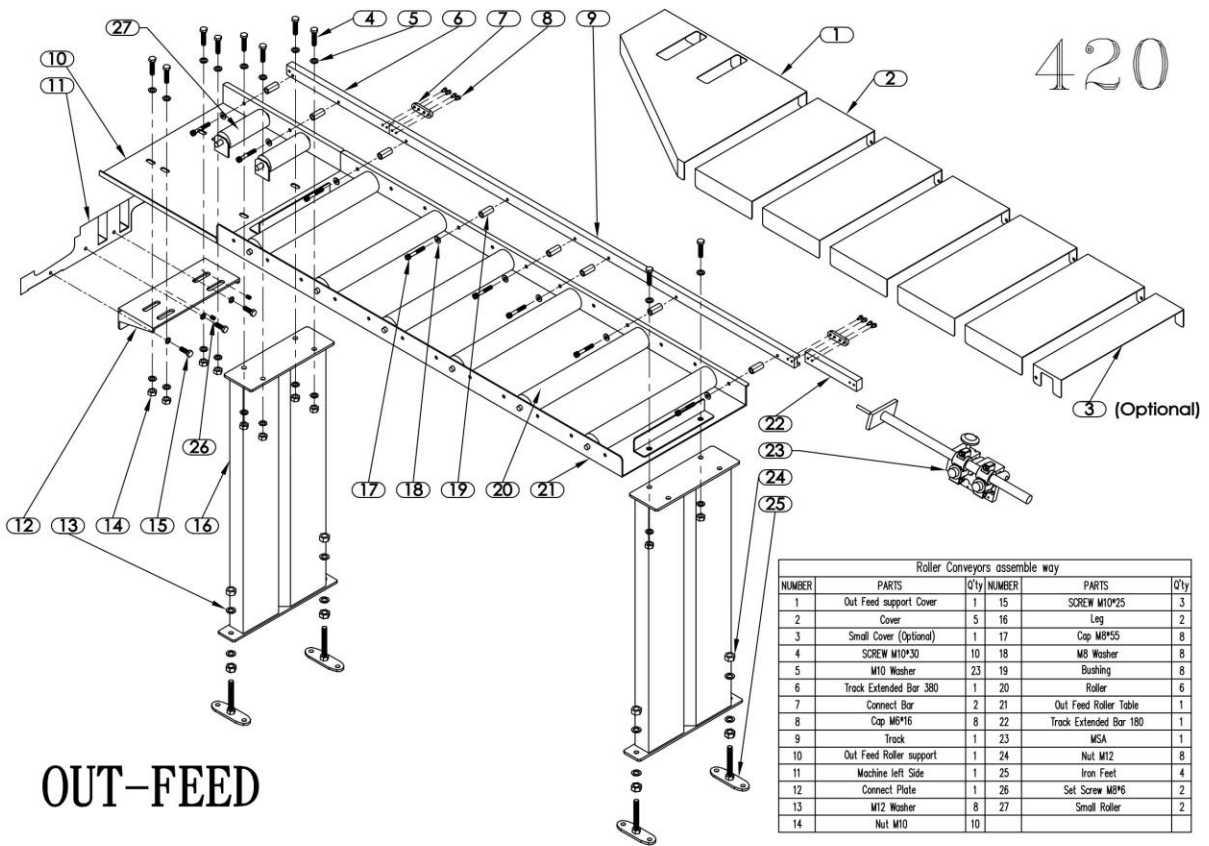
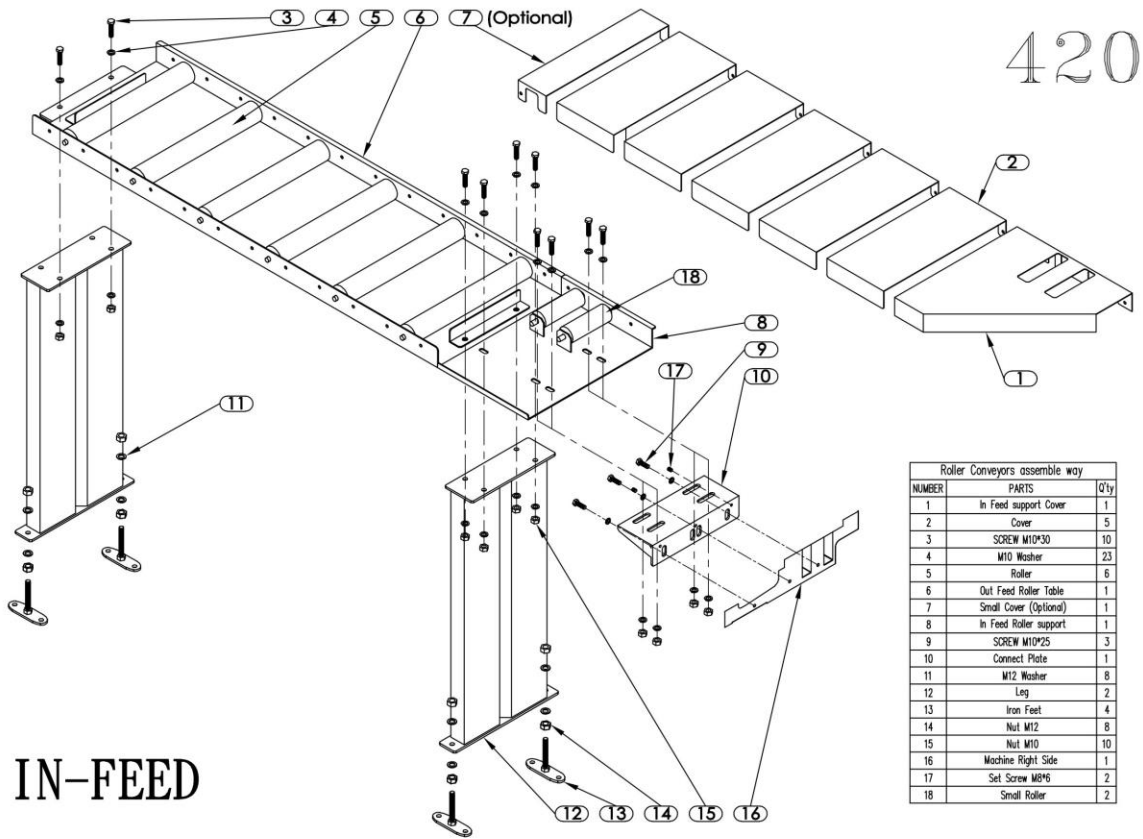


420-P9
420SA

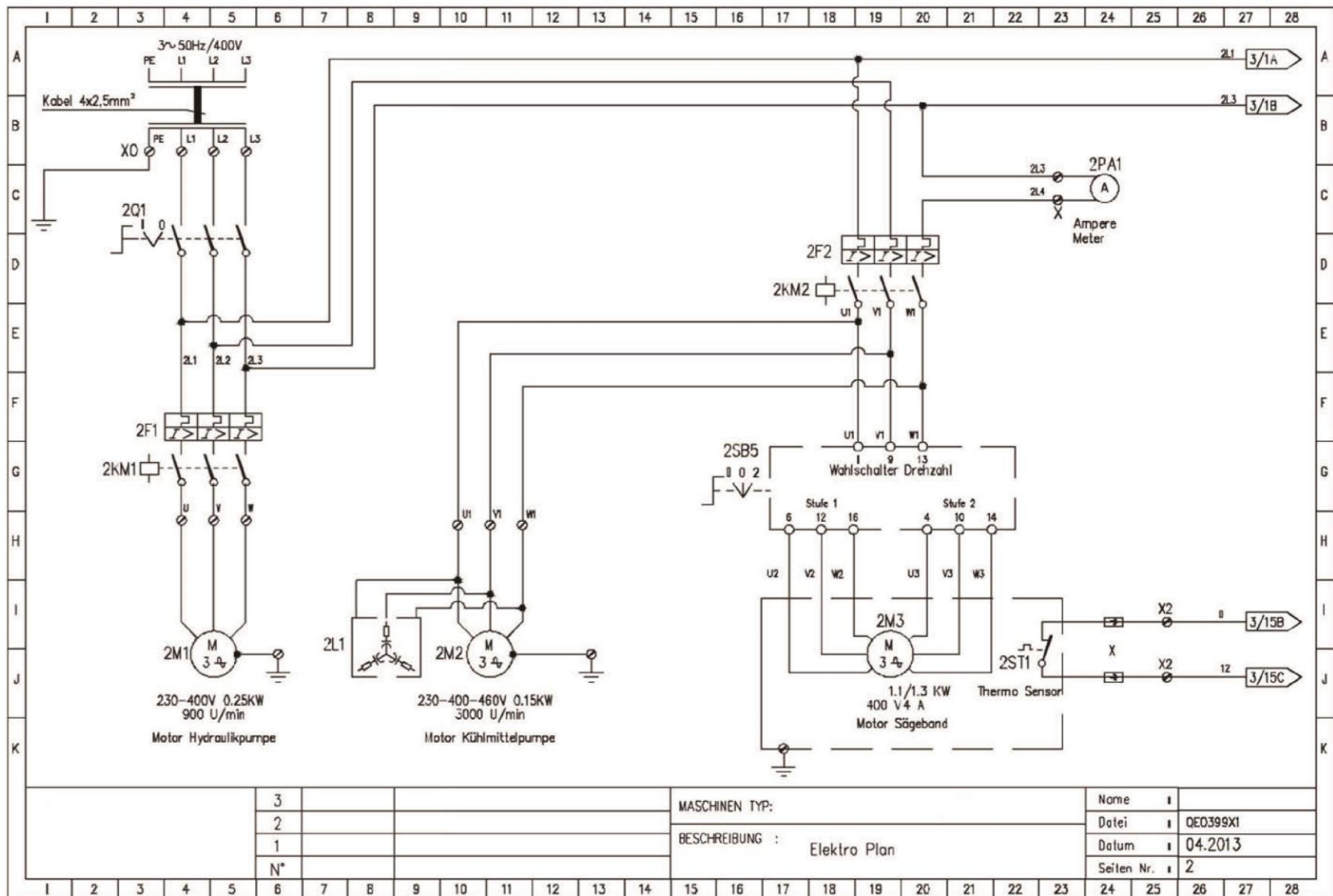
2020.02.27

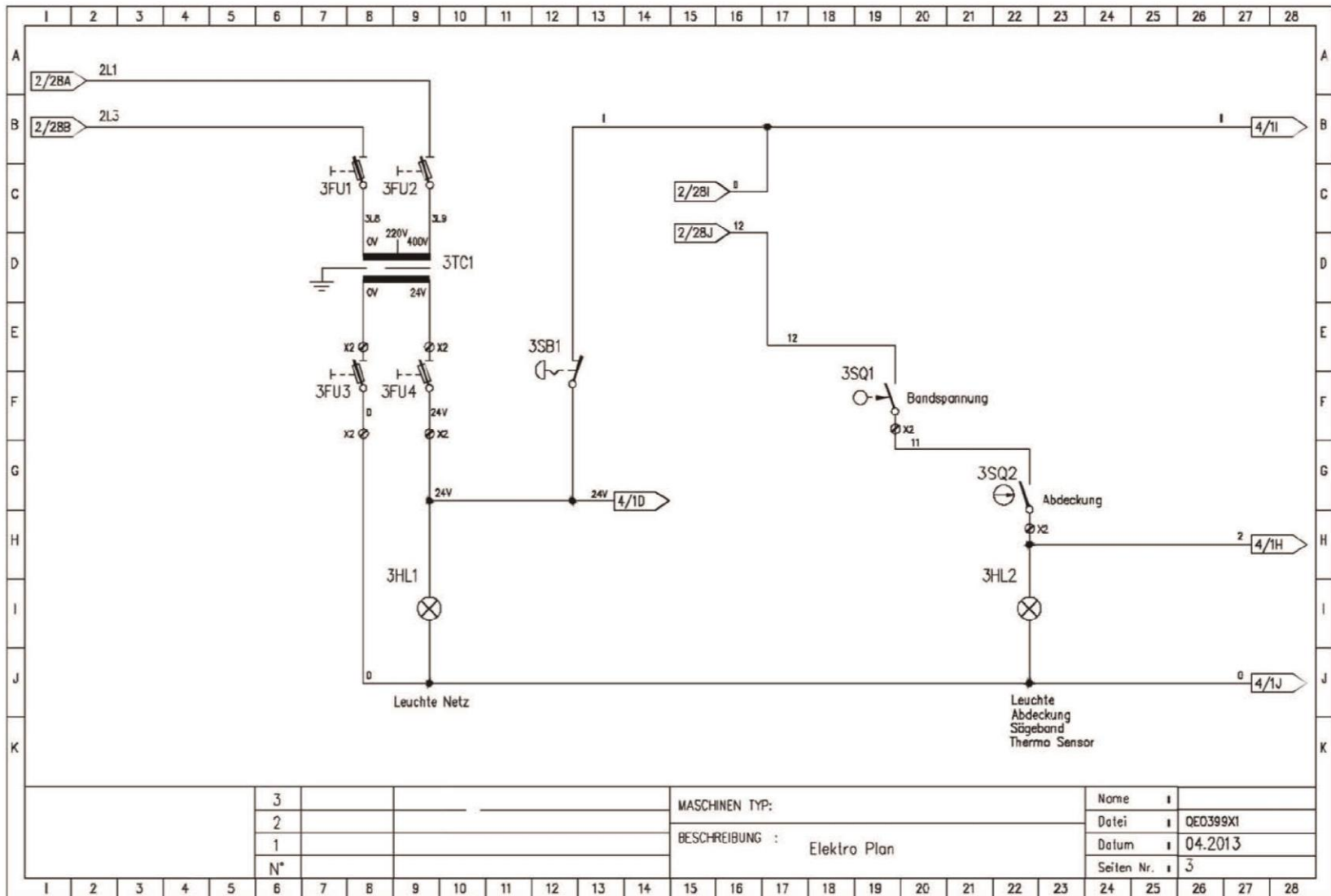
Index No.	Part No.	Description	Size	Qty.
E01	MBS1416VDAS-E01	Terminal block		1
E02	MBS1416VDAS-E02	Inverter		1
E03	MBS1416VDAS-E03	Terminal block		1
E04	MBS1416VDAS-E04	Bridge rectifier		1
E05	MBS1416VDAS-E05	PLC		1
E06	MBS1416VDAS-E06	Electromagnetic contactor		1
E07	MBS1416VDAS-E07	Relay group		1
E08	MBS1416VDAS-E08	Double terminal block		1
E09	MBS1416VDAS-E09	2 to 2 terminal blocks		1
E10	MBS1416VDAS-E10	Double terminal block		1
E11	MBS1416VDAS-E11	Transforme		1
E12	MBS1416VDAS-E12	Fuse Holder		1

Breakdown for the MBS1214VDAS Roller Stand Assembly



I	2	3	4	5	6	7	8	9	10	11	12	13	14	15	16	17	18	19	20	21	22	23	24	25	26	27	28	
A	ELEKTRISCHE SYMBOLE LEGENDE																											A
B	AT Steuerung B Näherungsschalter C Kondensator FU Sicherung KM Leistungsschutz HL Kontrolleuchte L Netz Filter M Motor PA Ampere Meter QM Leistungsschalter RP Potentiometer SA Wahlschalter SB Taster SQ Endschalter SP Druckschalter ST Thermo Schalter TC Transformator TV Spannungswandler U Frequenzumrichter V Diode VC Gleichrichter X Klemme XS Stecker XP Steckdose YV Elektroventil														Bezeichnung der Kabel und Leitungen (ABCD) AB = Blattnummer CD = laufende Nummer des Leiters Bezeichnung der Bauteile (A B C) A = Seitennummer B = Gerätebezeichnung C = Seriennummer Bezeichnung der Relaiskontakte (A . B) A = Seitennummer B = Spaltennummer Verweisnummer (A / B) A =Seitennummer B = Spalten und Beschriftungsnummer													B
C																												C
D																												D
E																												E
F																												F
G																												G
H																												H
I																												I
J																												J
K																												K
						3									MASCHINEN TYP:							Name						
						2																Datei	QED499X1					
						1									BESCHREIBUNG : Elektro Plan							Datum	04.2013					
						N*																Seiten Nr.	1					
I	2	3	4	5	6	7	8	9	10	11	12	13	14	15	16	17	18	19	20	21	22	23	24	25	26	27	28	

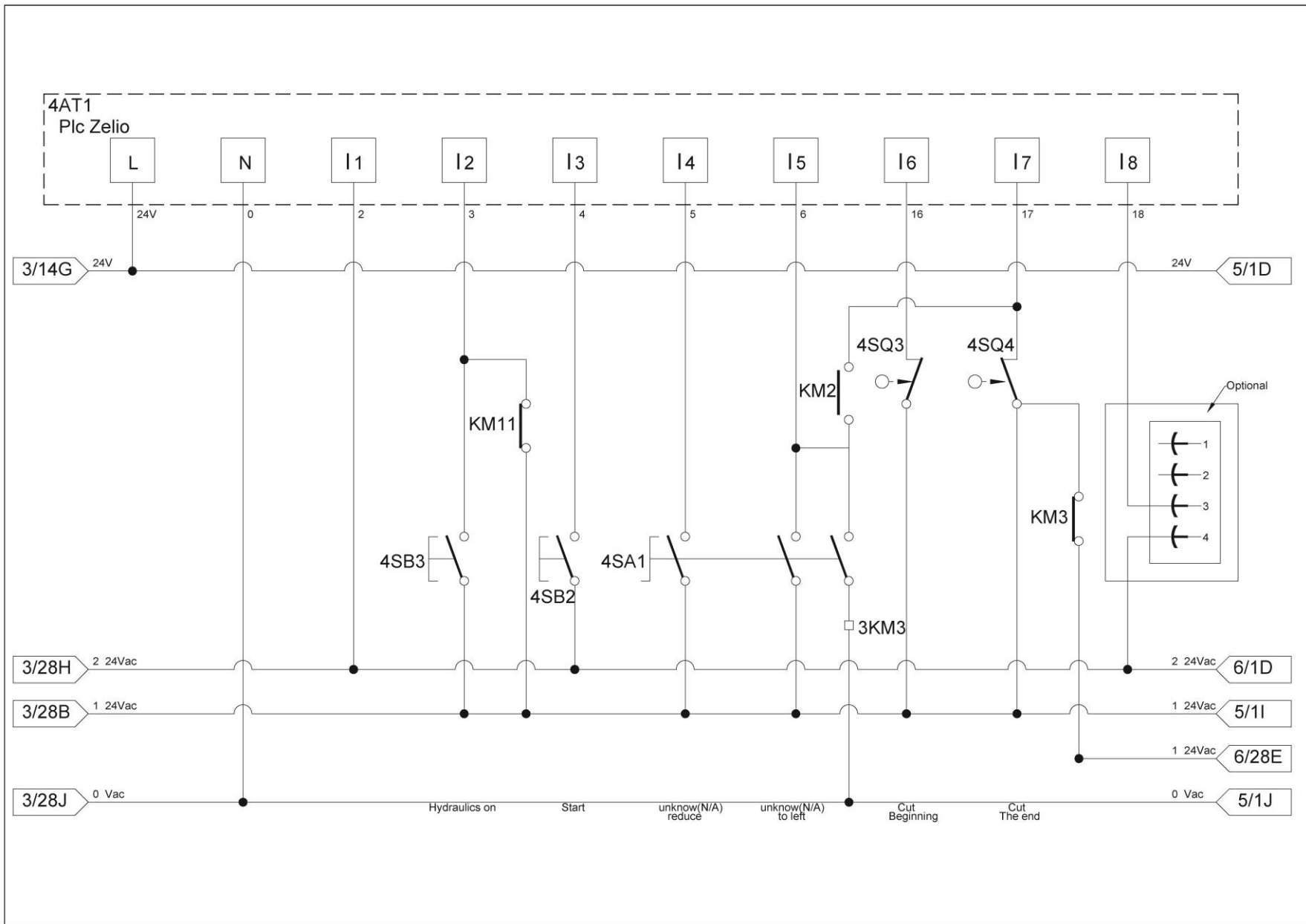


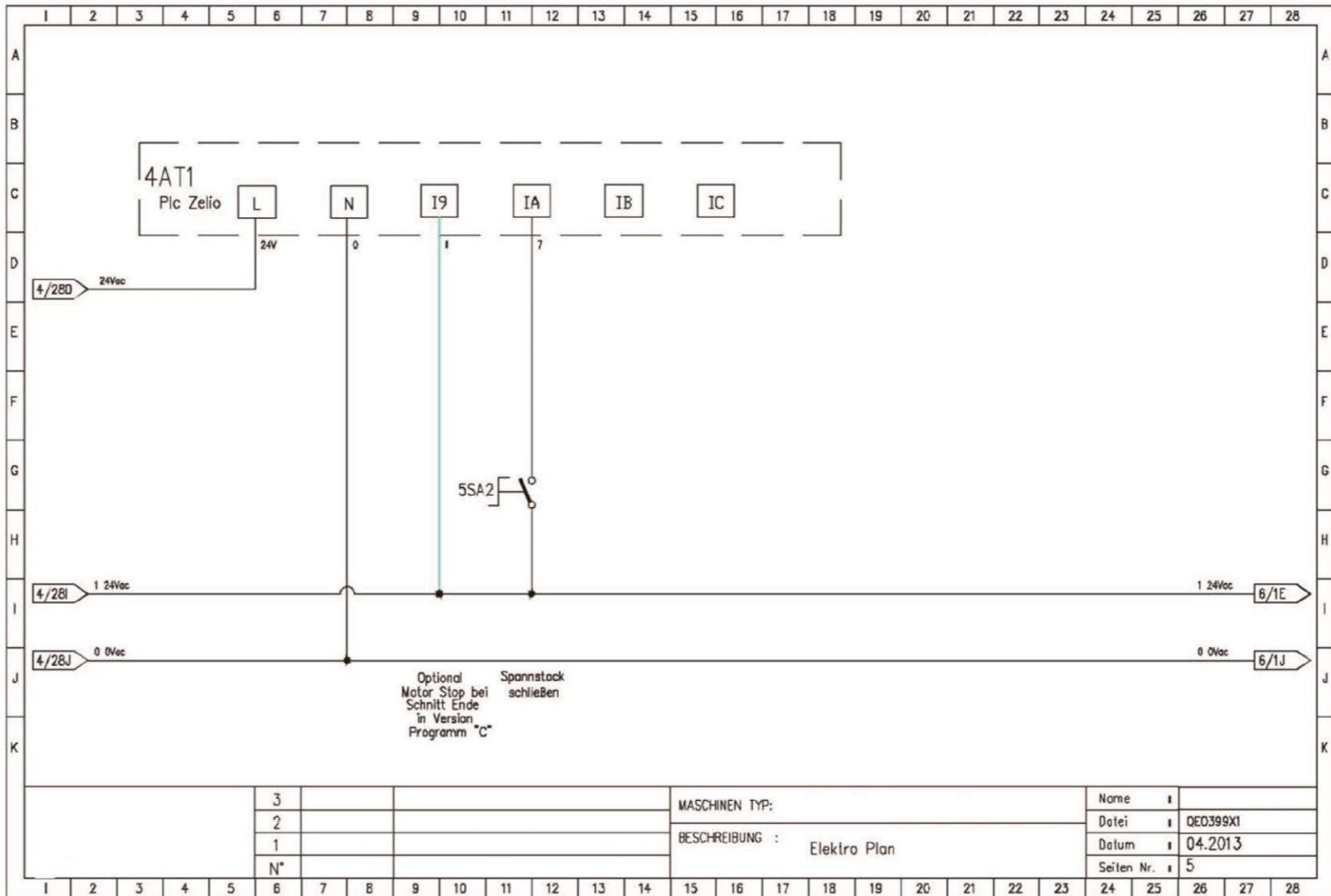


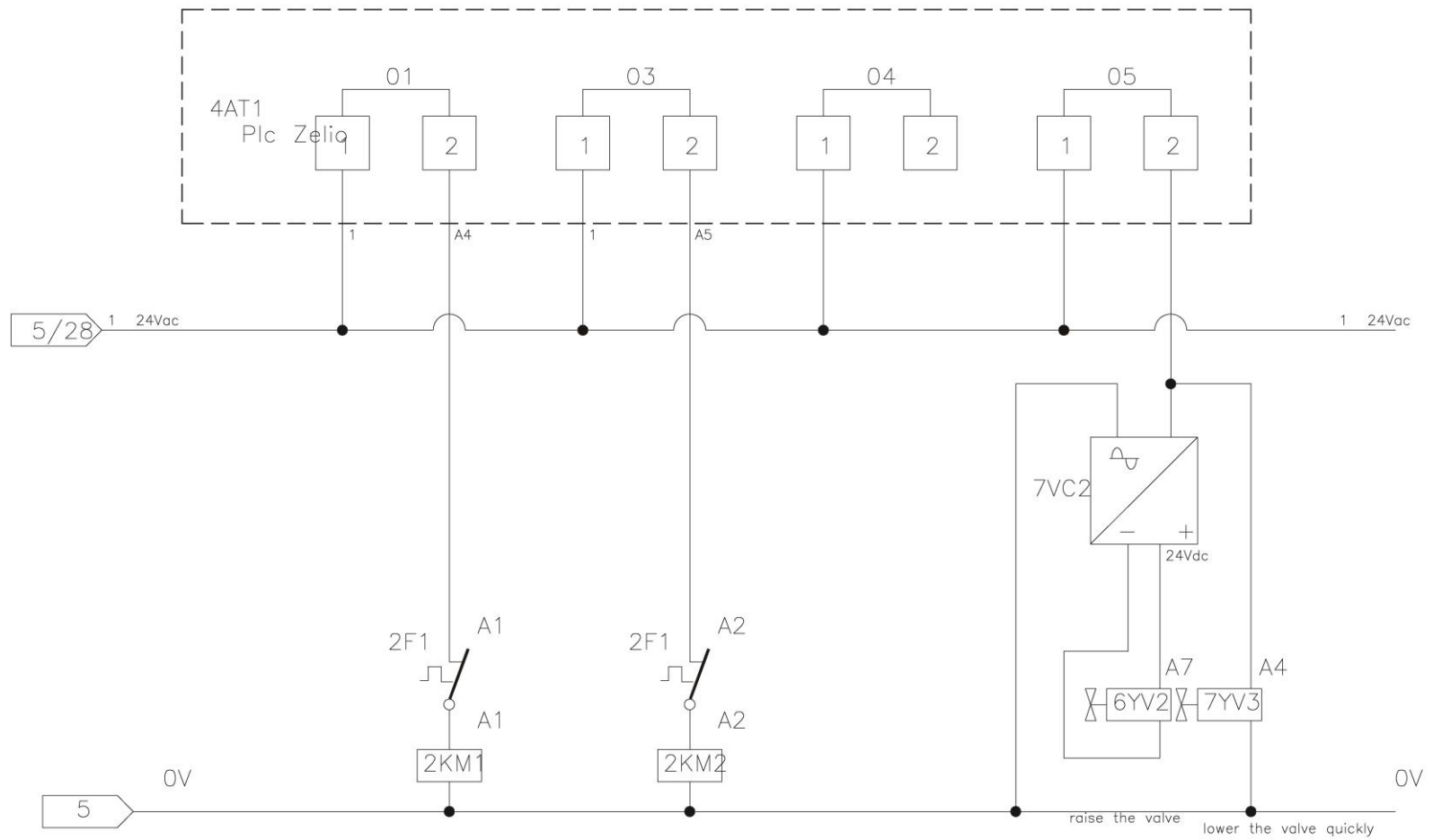
3		
2		
1		
N*		

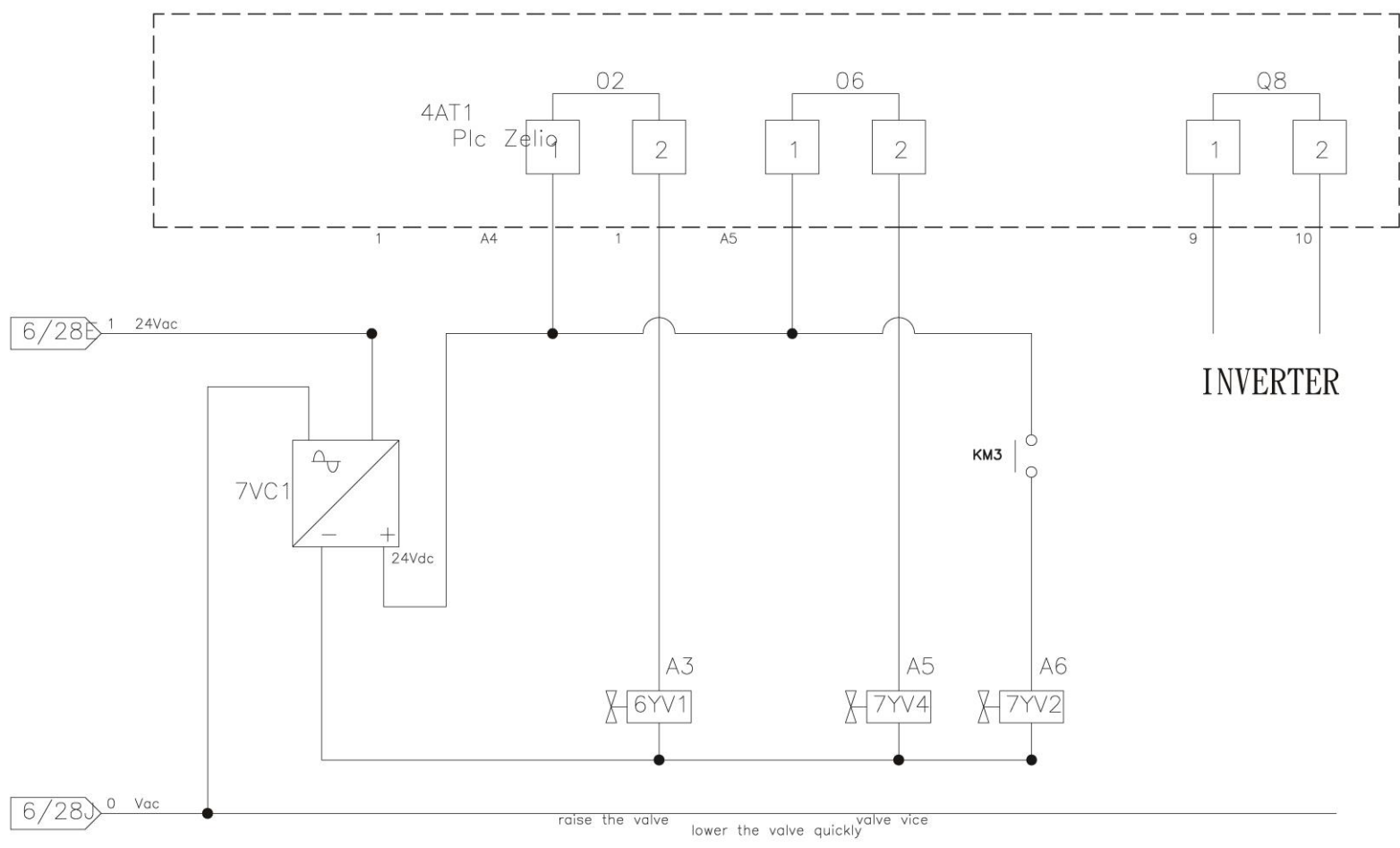
MASCHINEN TYP:
 BESCHREIBUNG : Elektro Plan

Nome	i	
Datei	i	QEO399X1
Datum	i	04.2013
Seiten Nr.	i	3

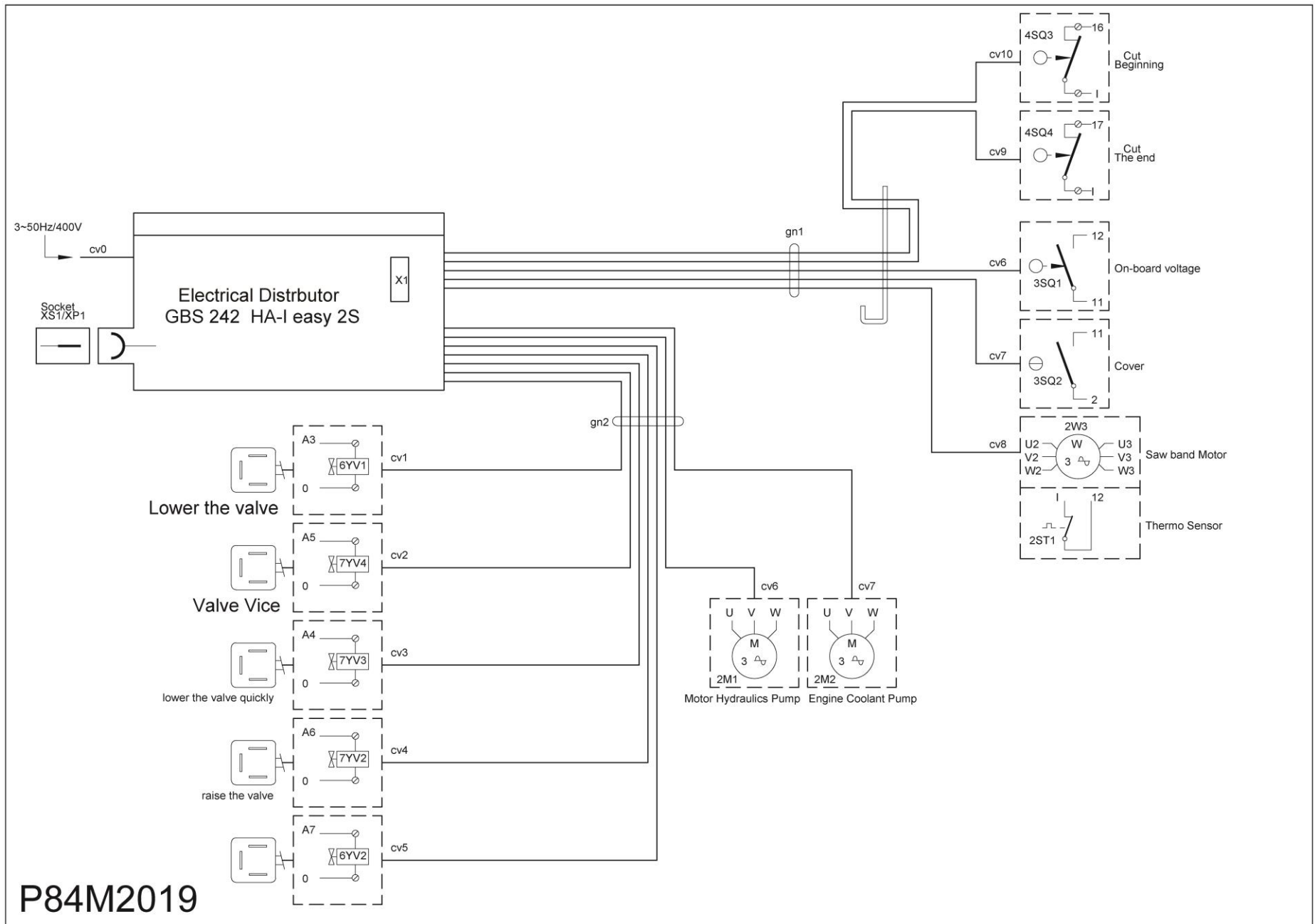




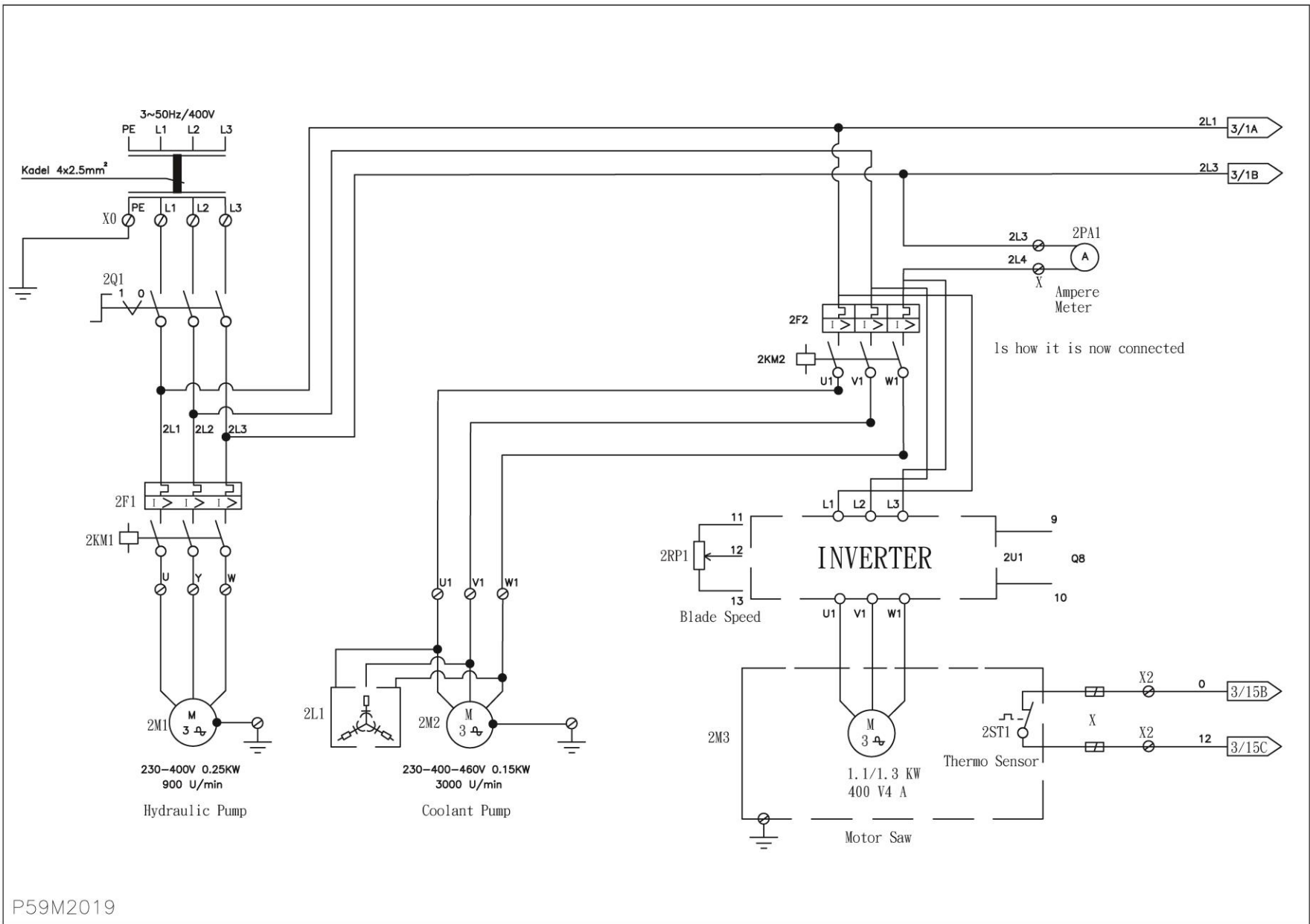


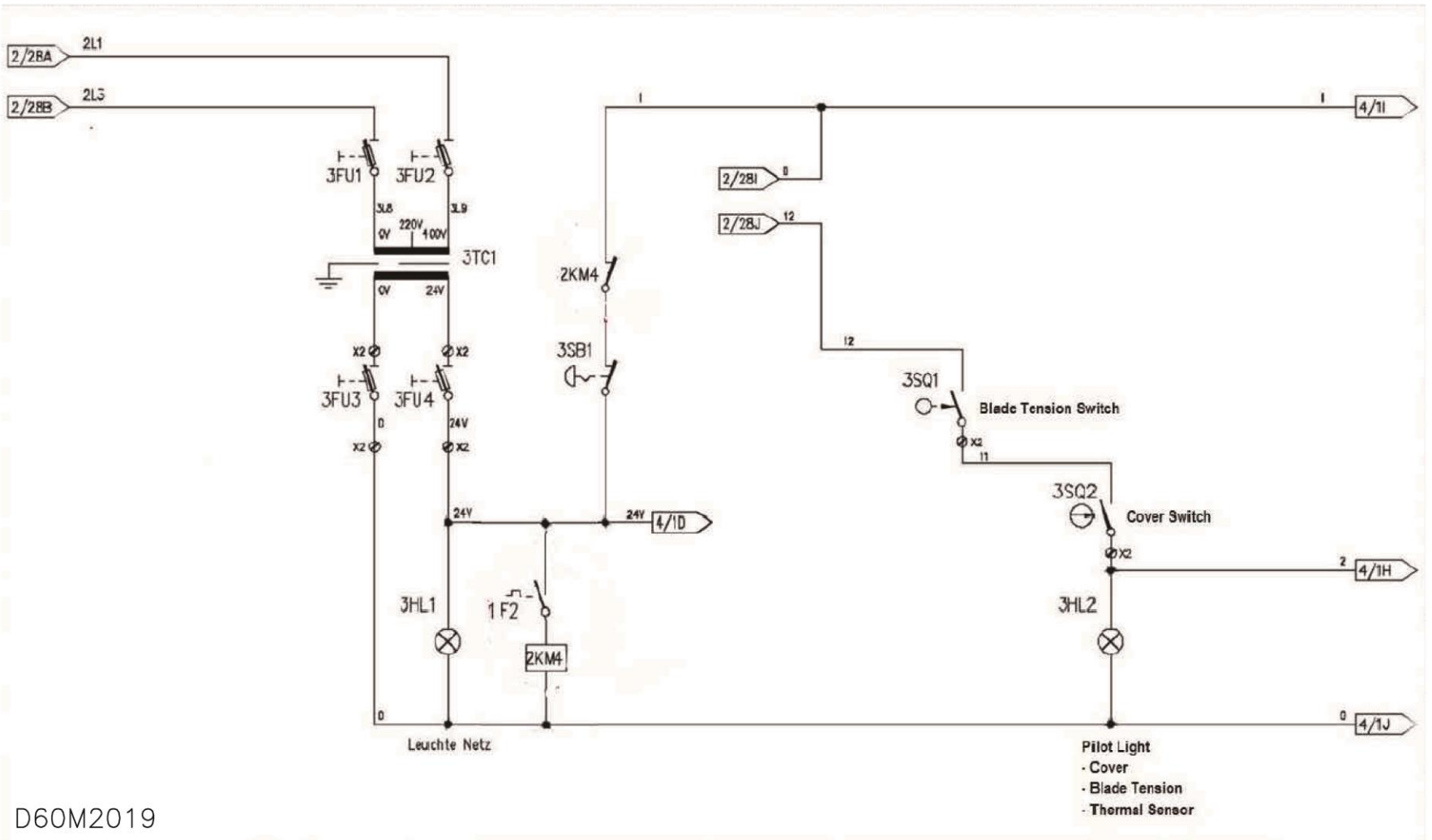


P83M2019



P84M2019





D60M2019