



## **MBS-1011DASP Semi-auto Bandsaw**

**MBS-1011DASP... 50000315T ...3~400V, 50Hz**

# **PARTS LIST**



**JPW Tool Group Hong Kong Limited**

98 Granville Road, Tsimshatsui East, Kowloon, Hong Kong, PRC

[www.jettools.com](http://www.jettools.com)

**Импортер в РФ: ООО «ИТА Технолоджи»**

105082, Москва, Переведеновский пер., д. 17

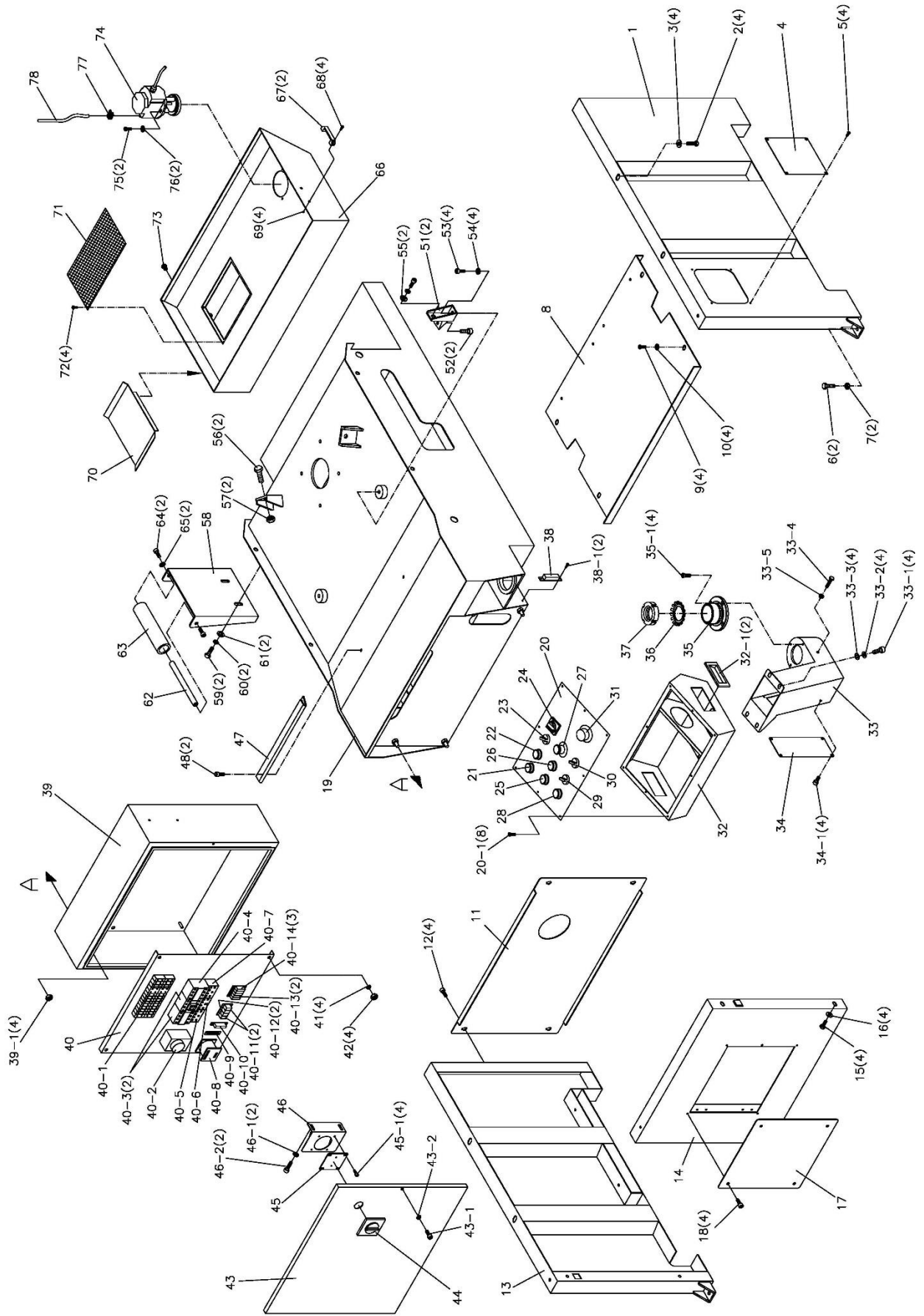
[www.jettools.ru](http://www.jettools.ru)

Made in Taiwan / Сделано на Тайване

P-50000315T

2022-10

# MBS-1011DASP Stand Assembly



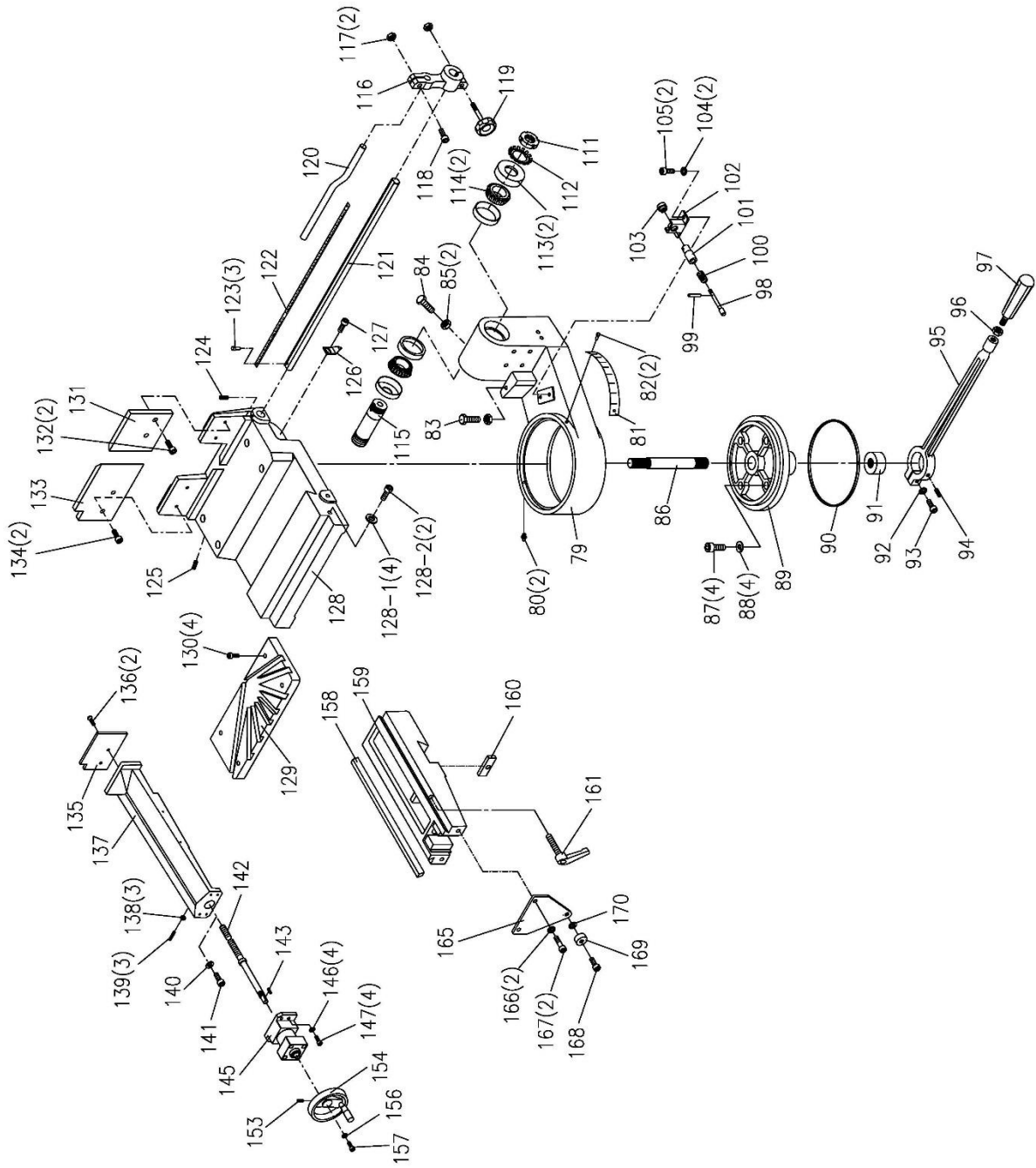
## MBS-1011DASP Stand Assembly

Index No.	Part No.	Description	Size	Q'ty
1	MBS-1011DAP-1	Base (Right Part)		1
2	TS-1491021E	Hex. Cap Bolt	M10x20	4
3	MBS-1011DAP-3	Washer	10x25x2	4
4	MBS-1011DAP-4	Plate		1
5	TS-1502011E	Hex. Socket Cap Screw	M5x8	4
6	TS-1492041E	Hex. Cap Bolt	M12x40	2
7	MBS-1011DAP-7	Nut	M12	2
8	MBS-1011DAP-8	Base (Bottom Plate)		1
9	TS-1490021E	Hex. Cap Bolt	M8x16	4
10	MBS-1011DAP-10	Washer	8x18x2	4
11	MBS-1011DAP-11	Base (Rear Part)		1
12	TS-2246082E	Hex. Socket Cap Screw	M6x8	4
13	MBS-1011DAP-13	Base (Left Part)		1
14	MBS-1011DAP-14	Base (Front Part)		1
15	TS-1490021E	Hex. Cap Bolt	M8x16	4
16	MBS-1011DAP-16	Washer	8x18x2	4
17	MBS-1011DAP-17	Plate		1
18	TS-1502011E	Hex. Socket Cap Screw	M5x8	4
19	MBS-1011DASP-19N	Saw Frame Stand		1
20	MBS-1011DASP-20N	Control Panel		1
20-1	MBS-1011DAP-25	Button Head Socket Screw	M5x8	8
21	MBS-1011DASP-21N	Power Indicator Light		1
22	MBS-1011DASP-22N	Hydraulic Start Switch		1
23	MBS-1011DASP-23N	Operation Mode Switch		1
24	MBS-1011DASP-24N	Speed Select Switch		1
25	MBS-1011DASP-25N	Stop Button		1
26	MBS-1011DASP-26N	Blade Running Switch		1
27	MBS-1011DASP-27N	Emergency Stop Button		1
28	MBS-1011DASP-28N	Cycle Start Button		1
29	MBS-1011DASP-29N	Saw Bow up/down Switch		1
30	MBS-1011DASP-30N	Vise open/close Switch		1
31	MBS-1011DASP-31N	Cutting Feed Knob		1
32	MBS-1011DAP-32N	Operation Box		1
32-1	MBS-1011DAP-32N-1	Handle		2
33	MBS-1011DAP-33N	Control Box Guide		1
33-1	TS-1504041E	Hex. Socket Cap Screw	M8x20	4
33-2	MBS-1011DAP-65	Spring Washer	M8	4
33-3	MBS-1011DAP-10	Washer	8x18x2	4
33-4	TS-1504061E	Hex. Cap Bolt	M8x30	1
33-5	MBS-1011DAP-117	Nut	M8	1
34	MBS-1011DASP-34N	Guide Seal Plate		1
34-1	TS-1502011E	Hex. Socket Cap Screw	M5x8	4
35	MBS-1011DASP-35N	Shaft Seat		1
35-1	MBS-1011DASP-35N-1	Flat Head Machine Screw	M6x16	4
36	MBS-1011DASP-36N	Washer	M60 (AW12)	1
37	MBS-1011DASP-37N	Bearing Nut	M60 (AN12)	1
38	MBS-1011DASP-38N	Cooper Ball Catch	69x13	1
38-1	MBS-1011DASP-38N-1	Flat Head Machine Screw	M4x10	2
39	MBS-1011DASP-39N	Electric Control Box		1
39-1	MBS-1011DAP-85	Nut	M10	4
40	MBS-1011DASP-40N	Bottom Plate		1
40-1	MBS-1011DASP-40N-1	Terminal Connector		1
40-2	MBS-1011DASP-40N-2	Timer	24VAC	1
40-3	MBS-1011DASP-40N-3	Contactors	C09D	2
40-4	MBS-1011DASP-41	Contactors	C12D	1
40-5	MBS-1011DASP-40N-5	Overload Relay (coolant)		1
40-6	MBS-1011DASP-40N-6	Overload Relay (hydraulic)		1
40-7	MBS-1011DASP-40N-7	Overload Relay (blade)		1
40-8	MBS-1011DASP-46N	Transformer	138VA	1

## MBS-1011DASP Stand Assembly

Index No.	Part No.	Description	Size	Q'ty
40-9	MBS-1011DASP-38N	Grounding Plate	8P	1
40-10	MBS-1011DASP-40N-10	Fuse Seat		1
	MBS-1011DASP-F5	Fuse	5A	1
40-11	MBS-1011DASP-40N-11	Relay	MY2	2
40-12	MBS-1011DASP-40N-12	Relay	MY4	2
40-13	MBS-1011DASP-40N-13	Fuse Seat		2
	MBS-1011DASP-F1	Fuse	1A	2
40-14	MBS-1011DASP-40N-14	Fuse Seat		3
	MBS-1011DASP-F8	Fuse	8A	3
41	MBS-1011DAP-76	Washer	6x13x1	4
42	MBS-1011DAP-69	Nut	M6	4
43	MBS-1011DASP-43N	Electric Control Box Door		1
43-1	TS-1503061E	Hex. Socket Cap Screw	M6x25	1
43-2	MBS-1011DAP-76	Washer	6x13x1	1
44	MBS-1011DASP-44N	Main Power Switch	NDS-40D	1
45	MBS-1011DASP-45N	Bottom Plate		1
45-1	MBS-1011DASP-45N-1	Round Head Screw	M5x10	4
46	MBS-1011DASP-46N	Support Plate		1
46-1	MBS-1011DAP-76	Washer	6x13x1	2
46-2	TS-2246082E	Hex. Socket Cap Screw	M6x8	2
47	MBS-1011DAP-47	Support Plate		1
48	TS-1504031E	Hex. Socket Cap Screw	M8x16	2
51	MBS-1011DAP-51	Mounting Bracket		2
52	TS-1504031E	Hex. Socket Cap Screw	M8x16	2
53	TS-1505021E	Hex. Socket Cap Screw	M10x20	4
54	MBS-1011DAP-54	Spring Washer	M10	4
55	MBS-1011DAP-55	Washer	10x25x2	2
56	TS-1492041E	Hex. Cap Bolt	M12x40	2
57	MBS-1011DAP-57	Nut	M12	2
58	MBS-1011DAP-58	Roller Stand		1
59	TS-1492011E	Hex. Cap Bolt	M12x25	2
60	MBS-1011DAP-60	Spring Washer	M12	2
61	MBS-1011DAP-61	Washer	12x28x3	2
62	MBS-1011DAP-62	Roller Shaft	1/2"x269	1
	MBS-1011DAP-63A	Single Roller Assembly (including 58,62,63,64,65)		
63	MBS-1011DAP-63	Roller	50.8x268	1
64	TS-1504041E	Hex. Socket Cap Screw	M8x20	2
65	MBS-1011DAP-65	Spring Washer	M8	2
66	MBS-1011DAP-66	Coolant Tank		1
67	MBS-1011DAP-67	Handle		2
68	TS-1503041E	Hex. Socket Cap Screw	M6x16	4
69	MBS-1011DAP-69	Nut	M6	4
70	MBS-1011DAP-70	Coolant Plate		1
71	MBS-1011DAP-71	Filter Net		1
72	TS-1533032E	Round Head Screw	M5x10	4
73	MBS-1011DAP-73	Plug	M3/8"	1
74	MBS-1011DAP-74	Pump	32W 400V 1 Ph	1
75	TS-1503061E	Hex. Socket Cap Screw	M6x25	2
76	MBS-1011DAP-76	Washer	6x13x1	2
77	MBS-1011DAP-77	Hose Clamp	13mm	1
78	MBS-1011DAP-78	Hose	5/16x172cm	1

# MBS-1011DASP Swivel & Base Assembly



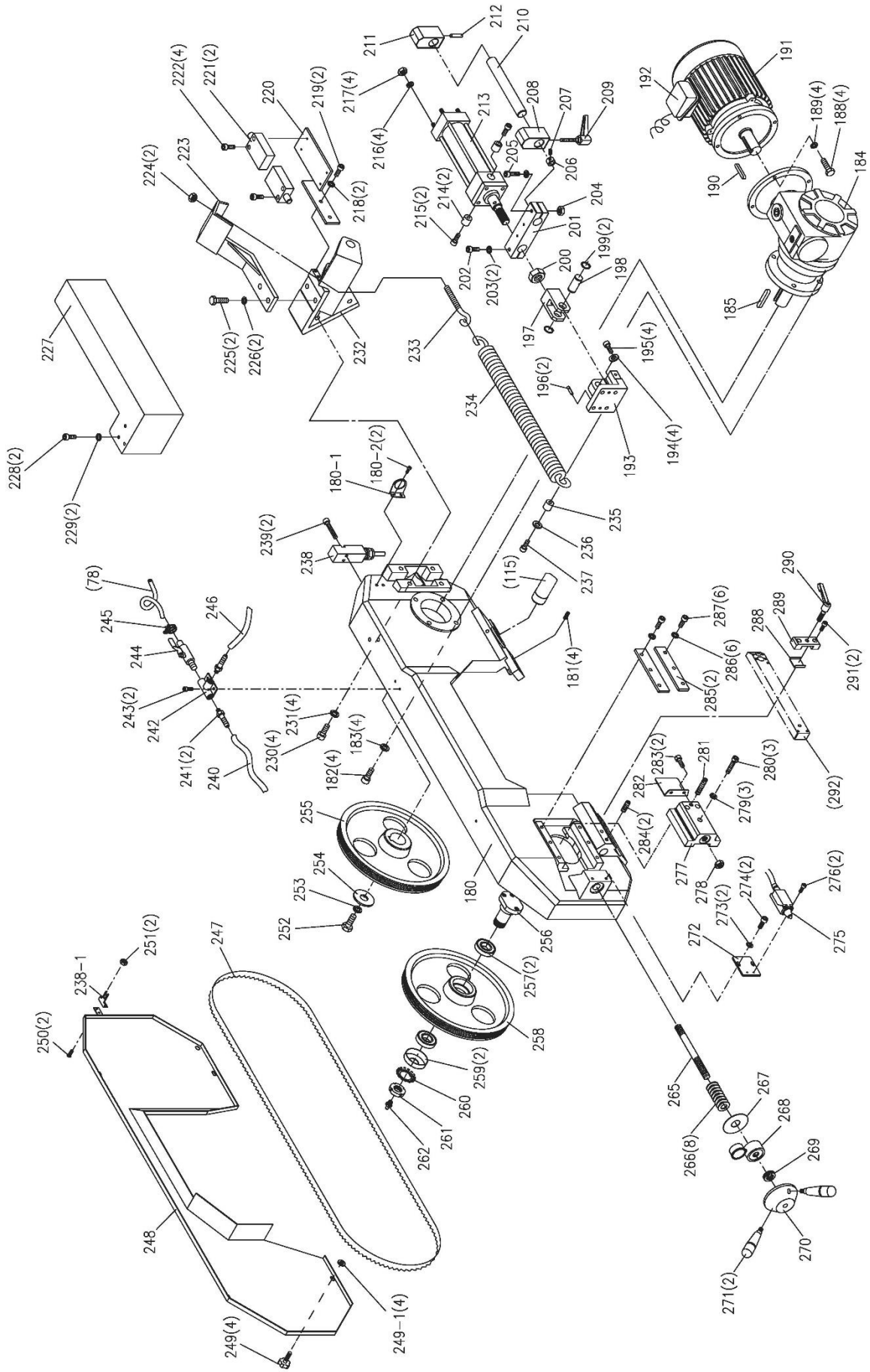
## MBS-1011DASP Swivel & Base Assembly

Index No.	Part No.	Description	Size	Q'ty
79	MBS-1011DAP-79	Swivel Arm		1
80	MBS-1011DAP-80	Oil Inlet	1/16"	2
81	MBS-1011DAP-81	Scale		1
82	MBS-1011DAP-82	Rivet	2.3x4	2
83	TS-1491061E	Hex. Cap Bolt	M10x40	1
84	TS-1491061E	Hex. Cap Bolt	M10x40	1
85	MBS-1011DAP-85	Nut	M10	2
86	MBS-1011DAP-86	Shaft		1
87	TS-1504061E	Hex. Socket Cap Screw	M8x30	4
88	MBS-1011DAP-88	Spring Washer	M8	4
89	MBS-1011DAP-89	Disk		1
90	MBS-1011DAP-90	Oil Seal	4x675L mm	1
91	MBS-1011DAP-91	Shaft Nut		1
92	MBS-1011DAP-92	Spring Washer	M10	1
93	TS-1505051E	Hex. Socket Cap Screw	M10x35	1
94	TS-1525031E	Set Screw	M10x16	1
95	MBS-1011DAP-95	Locking Lever		1
96	MBS-1011DAP-96	Nut	M12	1
97	MBS-1011DAP-97	Handle	M12x25	1
98	MBS-1011DAP-98	Pin		1
99	MBS-1011DAP-99	Spring Pin	Ø2.5x16	1
100	MBS-1011DAP-100	Spring	0.8x9x30mm	1
101	MBS-1011DAP-101	Bushing		1
102	MBS-1011DAP-102	Bracket		1
103	MBS-1011DAP-103	Knob		1
104	MBS-1011DAP-104	Spring Washer	M8	2
105	TS-1524061E	Hex. Socket Cap Screw	M8x25	2
111	MBS-1011DAP-111	Jam Nut	M30xP1.5	1
112	MBS-1011DAP-112	Star Washer	M35	1
113	MBS-1011DAP-113	Anti-Dust Cover	35mm	2
114	BB-32007E	Bearing	32007	2
115	MBS-1011DAP-115	Shaft		1
116	MBS-1011DAP-116	Bar Bracket		1
117	MBS-1011DAP-117	Nut	M8	2
118	TS-1504051E	Hex. Socket Cap Screw	M8x25	1
119	MBS-1011DAP-119	Knob	M8x30	1
120	MBS-1011DAP-120	Stop Bar		1
	MBS-1011DAP-121A	Stop-Rod Assembly (including 116-123)		
121	MBS-1011DAP-121	Length Rod		1
122	MBS-1011DAP-122	Scale		1
123	MBS-1011DAP-123	Rivet	2x5	3
124	TS-1523041E	Set Screw	M6x12	1
125	TS-1524021E	Set Screw	M8x10	1
126	MBS-1011DAP-126	Pointer		1
127	TS-1502011E	Hex. Socket Cap Screw	M5x8	1
128	MBS-1011DASP-128N	Table		1
128-1	MBS-1011DAP-55	Washer	10x25x2	4
128-2	TS-1506011E	Hex. Socket Cap Screw	M10x20	2
129	MBS-1011DAP-129	Changeable Plate		1
130	TS-1504031E	Hex. Socket Cap Screw	M8x16	4
131	MBS-1011DAP-131	Vise Jaw - Right		1
132	TS-1503041E	Hex. Socket Cap Screw	M6x16	2
133	MBS-1011DAP-133	Vise Jaw - Left		1
134	TS-1503041E	Hex. Socket Cap Screw	M6x16	2
135	MBS-1011DAP-135	Vise Jaw - Front		1
136	MBS-1011DAP-136	Flat Head Machine Screw	M6x16	2
137	MBS-1011DAP-137	Movable Vise		1
138	MBS-1011DAP-138	Nut	M5	3
139	MBS-1011DAP-139	Set Screw	M5x25	3

## MBS-1011DASP Swivel & Base Assembly

Index No.	Part No.	Description	Size	Q'ty
140	MBS-1011DAP-140	Washer	8x23x2	1
141	TS-1504031E	Hex. Socket Cap Screw	M8x16	1
142	MBS-1011DASP-142	Lead Screw		1
143	MBS-1011DASP-143	Key	5x5x15	1
145	MBS-1011DASP-145	Hydraulic Cylinder (Vise)		1
146	MBS-1011DASP-146	Spring Washer	M8	4
147	TS-1504051E	Hex. Socket Cap Screw	M8x25	4
153	TS-1524021E	Set Screw	M8x10	1
154	MBS-1011DAP-154	Hand Wheel	6-1/2"	1
156	MBS-1011DASP-156	Spring Washer	M6	1
157	TS-1503061E	Hex. Socket Cap Screw	M6x25	1
158	MBS-1011DAP-158	Dovetail Plate		1
159	MBS-1011DASP-159N	Vise Seat		1
160	MBS-1011DAP-160	Vise Setting Plate		1
161	MBS-1011DASP-161N	Handle	M10x35	1
165	MBS-1011DAP-165	Setting Plate		1
166	MBS-1011DAP-166	Spring Washer	M8	2
167	TS-1504041E	Hex. Socket Cap Screw	M8x20	2
168	TS-1504031E	Hex. Socket Cap Screw	M8x16	1
169	BB-608ZZE	Bearing	608ZZ	1
170	MBS-1011DAP-170	Spring Washer	M8	1

# MBS-1011DASP Bow Assembly





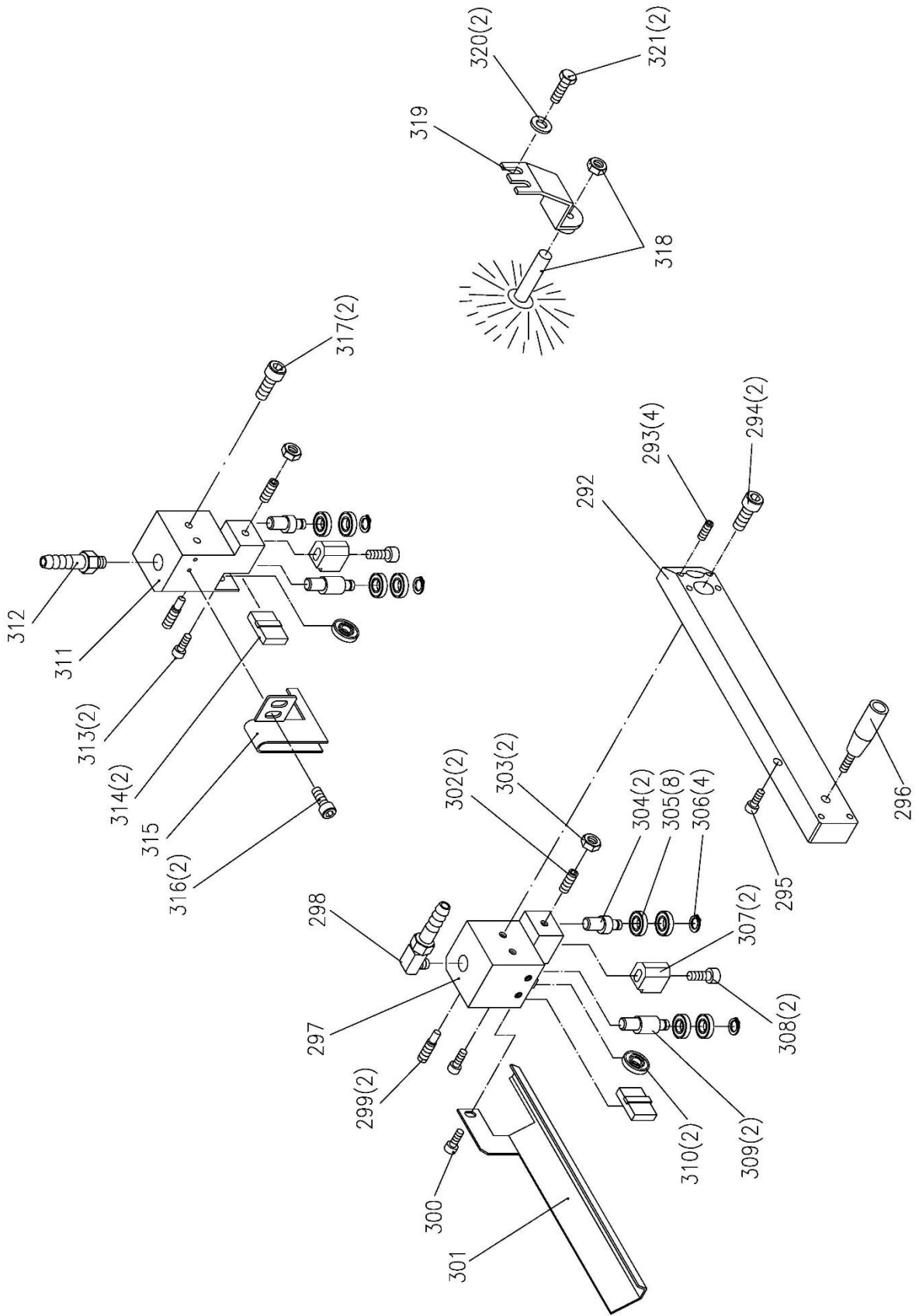
## MBS-1011DASP Bow Assembly

Index No.	Part No.	Description	Size	Q'ty
180	MBS-1011DAP-180	Saw Arm		1
180-1	MBS-1011DASP-180-1	Fixed Plate		1
180-2	MBS-1011DASP-180-2	Hex. Socket Cap Screw	M4x30	2
181	TS-1523041E	Set Screw	M6x12	4
182	TS-1505061E	Hex. Socket Cap Screw	M10x40	4
183	MBS-1011DAP-183	Spring Washer	M10	4
184	MBS-1011DAP-184	Reduction Unit		1
184-1	MBS-1011DAP-184-1	Output Shaft (not show)	Ø 30mm	1
185	MBS-1011DASP-185N	Key	8x7x40	1
188	TS-1491031E	Hex. Cap Bolt	M10x25	4
189	MBS-1011DAP-189	Spring Washer	M10	4
190	MBS-1011DAP-190	Key	6x6x30	1
191	MBS-1011DAP-191	Motor	1.1/0.56kW 400V 3 Ph	1
192	MBS-1011DAP-192	Junction Box		1
193	MBS-1011DAP-171	Bottom Support		1
194	MBS-1011DAP-173	Spring Washer	M8	4
195	TS-1504051E	Hex. Socket Cap Screw	M8x25	4
196	MBS-1011DAP-174	Spring Pin	Ø6x20	2
197	MBS-1011DASP-197	Coupling Fork		1
198	MBS-1011DASP-198	Pin on Fork		1
199	MBS-1011DASP-199	C-Ring	S-20	2
200	MBS-1011DASP-200	Nut	M20	1
201	MBS-1011DASP-201	Rod Supporting Block		1
202	TS-1505051E	Hex. Socket Cap Screw	M10x35	1
203	MBS-1011DASP-203	Spring Washer	M10	2
204	MBS-1011DASP-204	Nut	M10	1
205	TS-1505061E	Hex. Socket Cap Screw	M10x40	1
206	MBS-1011DASP-206	Bush		1
207	TS-1523011E	Set Screw	M6x6	1
208	MBS-1011DASP-208	Adjustable Stop		1
209	MBS-1011DASP-209	Handle	M8x25	1
210	MBS-1011DASP-210	Stop Bar		1
211	MBS-1011DASP-211	Adjustable Stop		1
212	TS-1524021E	Set Screw	M8x10	1
213	MBS-1011DASP-213	Hydraulic Cylinder (Arm)		1
214	MBS-1011DASP-214	Bushing		2
215	TS-1506011E	Hex. Socket Cap Screw	M12x20	2
216	MBS-1011DASP-216	Spring Washer	M8	4
217	MBS-1011DASP-217	Nut	M8	4
218	MBS-1011DASP-218	Spring Washer	M6	2
219	TS-1503031E	Hex. Socket Cap Screw	M6x12	2
220	MBS-1011DASP-220	Limit Switch Plate		1
221	MBS-1011DASP-221	Limit Switch		2
222	TS-1501071E	Hex. Socket Cap Screw	M4x25	4
223	MBS-1011DASP-223	Spring Holder		1
224	MBS-1011DASP-224	Nut	3/8"	2
225	TS-1492011E	Hex. Cap Bolt	M12x25	2
226	MBS-1011DASP-226	Spring Washer	M12	2
227	MBS-1011DASP-227	Cylinder Guard		1
228	TS-1503041E	Hex. Socket Cap Screw	M6x16	2
229	MBS-1011DASP-229	Washer	6x13x1	2
230	TS-1505081E	Hex. Socket Cap Screw	M10x50	4
231	MBS-1011DASP-231	Spring Washer	M10	4
232	MBS-1011DASP-232	Cylinder Coupling		1
233	MBS-1011DASP-233	Spring Hook	3/8"	1
234	MBS-1011DASP-234	Spring		1
235	MBS-1011DASP-235	Setting Bushing		1
236	MBS-1011DASP-236	Spring Washer	M8	1
237	TS-1504071E	Hex. Socket Cap Screw	M8x35	1

## MBS-1011DASP Bow Assembly

Index No.	Part No.	Description	Size	Q'ty
238	MBS-1011DAP-238	Limit Switch		1
238-1	MBS-1011DAP-238-1	Switch Pin		1
239	TS-1501081E	Hex. Socket Cap Screw	M4x30	2
240	MBS-1011DAP-240	Hose	5/16"	1
241	MBS-1011DAP-241	Pipe Fitting	1/4Px5/16	2
242	MBS-1011DAP-242	T Connector		1
243	TS-1502041E	Hex. Socket Cap Screw	M5x16	2
244	MBS-1011DAP-244	Coolant Switch	1/4Px5/16	1
245	MBS-1011DAP-245	Hose Clamp	13mm	1
246	MBS-1011DAP-246	Hose	5/16"	1
247	MBS-1011DAP-247	Saw Blade	27x0.9x2685mm 5/8T	1
248	MBS-1011DAP-248	Blade Cover		1
249	MBS-1011DAP-249	Plum Screw	M6x12	4
249-1	MBS-1011DAP-249N-1	Spacer	12#	4
250	MBS-1011DAP-250	Round Head Screw	M4x8	2
251	MBS-1011DAP-251	Nut	M4	2
252	TS-1491031E	Hex. Cap Bolt	M10x25	1
253	MBS-1011DAP-253	Spring Washer	M10	1
254	MBS-1011DAP-254	Washer		1
255	MBS-1011DAP-255	Drive Flywheel		1
256	MBS-1011DAP-256	Idle Flywheel Shaft		1
257	BB-32006E	Bearing	32006	2
258	MBS-1011DAP-258	Idle Flywheel		1
259	MBS-1011DAP-259	Anti-dust Cover	30mm	2
260	MBS-1011DAP-260	Star Washer	M30	1
261	MBS-1011DAP-261	Jam Nut	M30xP1.5	1
262	MBS-1011DAP-262	Oil Inlet	1/16	1
265	MBS-1011DAP-265	Tension Shaft	M16x230	1
266	MBS-1011DAP-266	Thrust Spring Washer		8
267	MBS-1011DAP-267	Plate		1
268	MBS-1011DAP-268	Blade Tension Gauge		1
269	BB-51103E	Bearing	51103	1
270	MBS-1011DAP-270	Handle Wheel		1
271	MBS-1011DAP-271	Handle		2
272	MBS-1011DAP-272	Plate		1
273	MBS-1011DAP-273	Washer	6x13x1	2
274	TS-1503031E	Hex. Socket Cap Screw	M6x12	2
275	MBS-1011DAP-275	Limit Switch		1
276	TS-1501071E	Hex. Socket Cap Screw	M4x25	2
277	MBS-1011DAP-277	Slide Bracket		1
278	MBS-1011DAP-278	Nut	M16	1
279	MBS-1011DAP-279	Spring Washer	M10	3
280	TS-1505071E	Hex. Socket Cap Screw	M10x45	3
281	TS-1525051E	Set Screw	M10x25	1
282	MBS-1011DAP-282	Cover Plate		1
283	TS-1503011E	Hex. Socket Cap Screw	M6x8	2
284	TS-1524021E	Set Screw	M8x10	2
285	MBS-1011DAP-285	Gib		2
286	MBS-1011DAP-286	Spring Washer	M8	6
287	TS-1504041E	Hex. Socket Cap Screw	M8x20	6
288	MBS-1011DAP-288	Press Plate		1
289	MBS-1011DAP-289	Setting Bracket		1
290	MBS-1011DAP-290	Handle	M10x25	1
291	TS-1504051E	Hex. Socket Cap Screw	M8x16	2

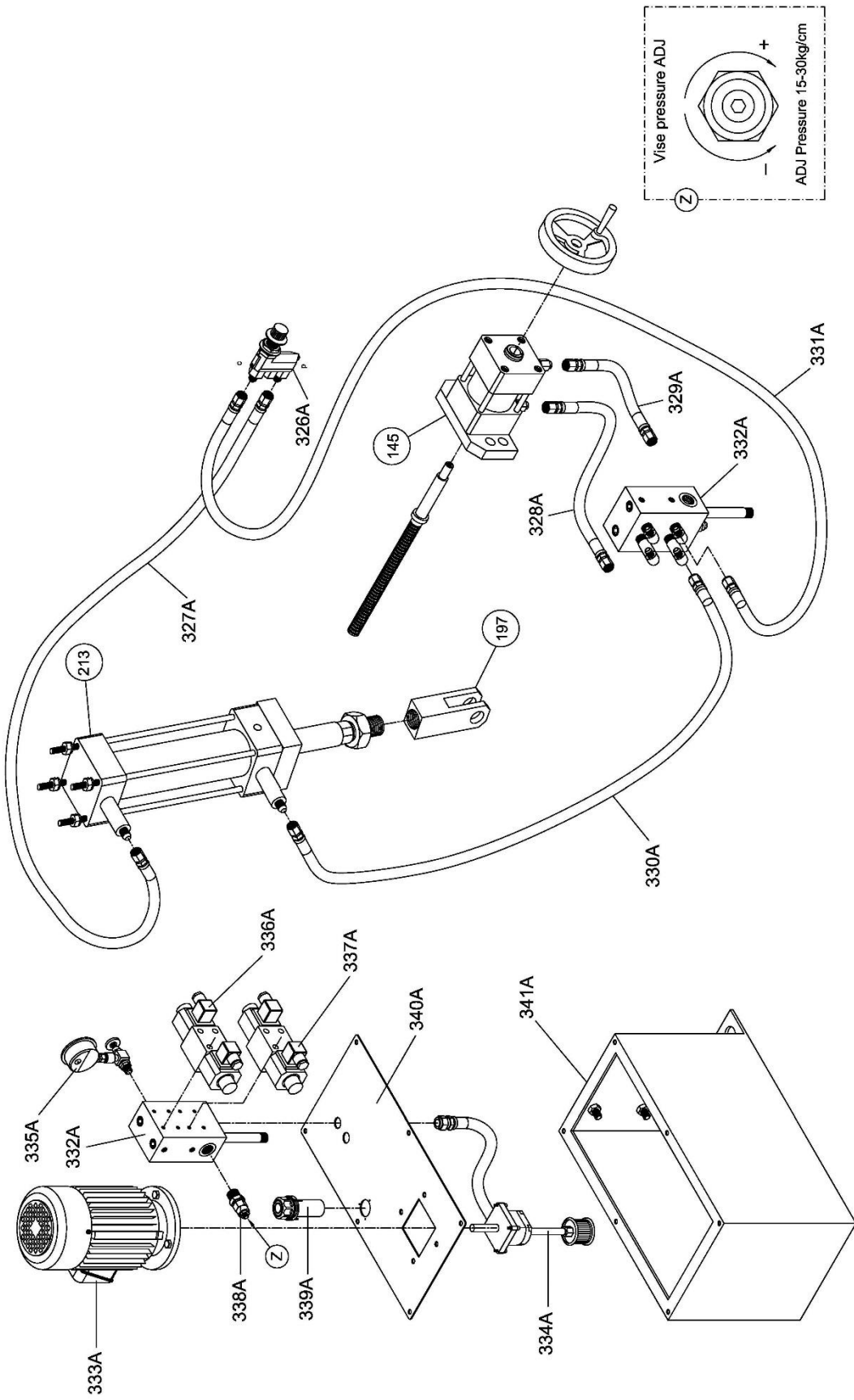
# MBS-1011DASP Bearing Guide Assembly



## MBS-1011DASP Bearing Guide Assembly

Index No.	Part No.	Description	Size	Q'ty
292	MBS-1011DAP-292	Blade Guide Movable Rod		1
293	TS-1523041E	Set Screw	M6x12	4
294	TS-1504041E	Hex. Socket Cap Screw	M8x20	2
295	TS-1503011E	Hex. Socket Cap Screw	M6x8	1
296	MBS-1011DAP-296	Handle	M6x60	1
	MBS-1011DAP-297A	Bearing Guide Assembly (Front)		1
		(including 297,299,302,303,304,305,306,307,308,309,310,313,314)		
297	MBS-1011DAP-297	Guide Bracket		1
298	MBS-1011DAP-298	Pipe Fitting	1/4Px5/16	1
299	MBS-1011DAP-299	Bolt		2
300	TS-1503011E	Hex. Socket Cap Screw	M6x8	1
301	MBS-1011DAP-301	Blade Guard		1
302	TS-1523041E	Set Screw	M6x12	2
303	MBS-1011DAP-303	Nut	M6	2
304	MBS-1011DAP-304	Centric Shaft		2
305	BB-608ZZE	Bearing	608ZZ	8
306	MBS-1011DAP-306	E-Ring	E-7	4
307	MBS-1011DAP-307	Blade Guide		2
308	TS-1503061E	Hex. Socket Cap Screw	M6x25	2
309	MBS-1011DAP-309	Eccentric Shaft		2
310	BB-608ZZE	Bearing	608ZZ	2
	MBS-1011DAP-311A	Bearing Guide Assembly (Rear)		1
		(including 299,302,303,304,305,306,307,308,309,310,311,313,314)		
311	MBS-1011DAP-311	Guide Bracket		1
312	MBS-1011DAP-312	Pipe Fitting	1/4Px5/16	1
313	TS-1503011E	Hex. Socket Cap Screw	M6x8	2
314	MBS-1011DAP-314	Blade Guide		2
315	MBS-1011DAP-315	Blade Guard		1
316	TS-1503011E	Hex. Socket Cap Screw	M6x8	2
317	TS-1504041E	Hex. Socket Cap Screw	M8x20	2
318	MBS-1011DAP-318	Brush With Nut	Ø50	1
319	MBS-1011DAP-319	Brush Clamp		1
320	MBS-1011DAP-320	Washer	6x13x1	2
321	TS-1482021E	Hex. Cap Bolt	M6x12	2

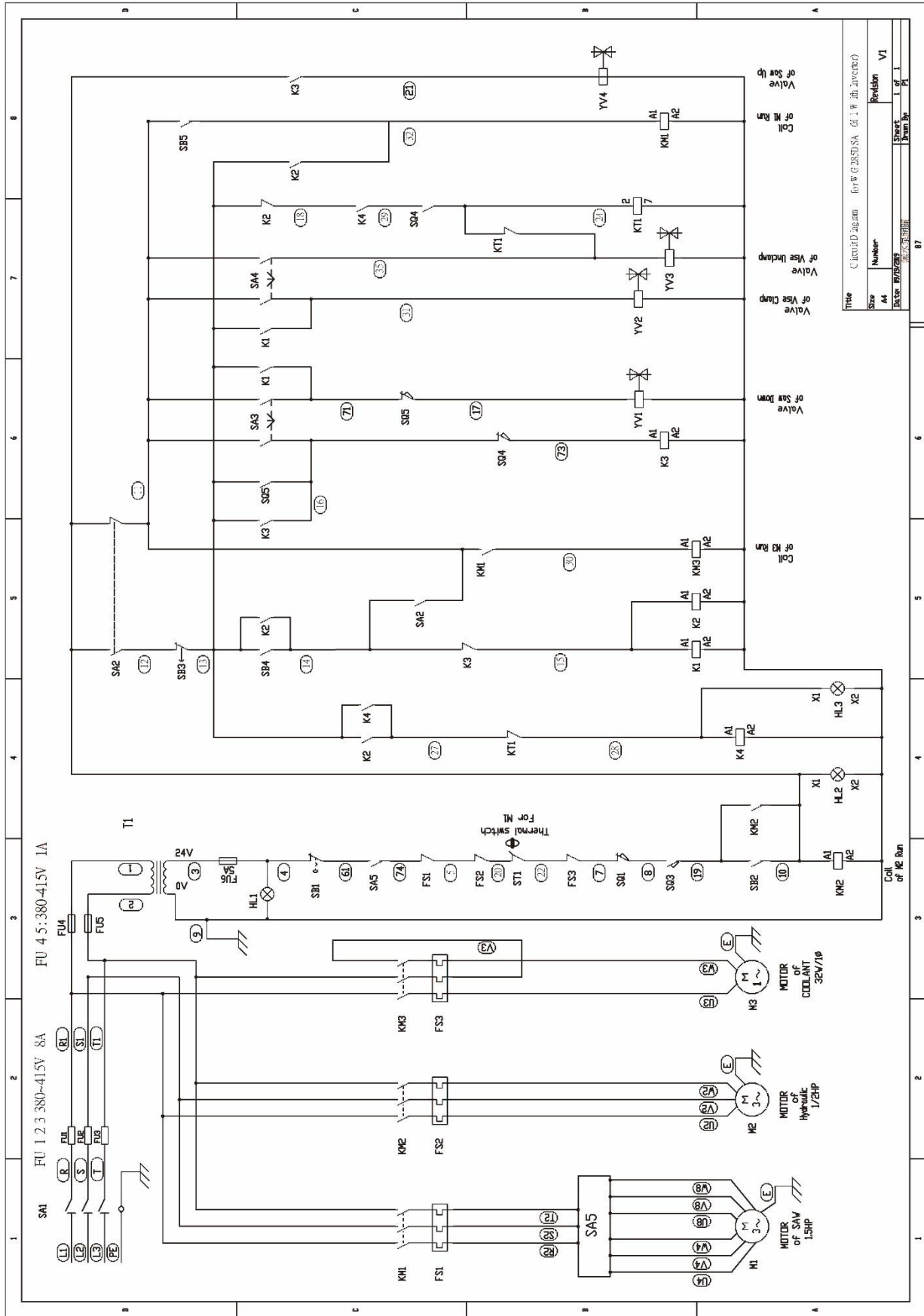
# Semi Auto and Vise Hydraulic System



## MBS-1011DASP Hydraulic System Assembly

Index No.	Part No.	Description	Size	Q'ty
326A	1011DASP-326A	Flow Control		1
327A	1011DASP-327A	Hose	2.5 meters	1
328A	1011DASP-328A	Hose	2.0 meters	1
329A	1011DASP-329A	Hose	2.0 meters	1
330A	1011DASP-330A	Hose	2.0 meters	1
331A	1011DASP-331A	Hose	1.5 meters	1
332A	1011DASP-332A	Manifold		1
333A	1011DASP-333A	Hydraulic Motor	0.37kW,400V,3 Ph...	1
334A	1011DASP-334A	Pump		1
335A	1011DASP-335A	Oil Gauge		1
336A	1011DASP-336A	Solenoid	2D2	1
337A	1011DASP-337A	Solenoid	3C4	1
338A	1011DASP-338A	Pressure Regulator		1
339A	1011DASP-339A	Oil Fill Port		1
340A	1011DASP-340A	Tank Cover		1
341A	1011DASP-341A	Tank		1

MBS-1011DASP...50000315T... 3~400V, 50Hz



Title		Circuit Diagram for W.G. 28STD SA (d. : W. Jh. Inverter)	
Size	Number	Revision	V1
44	7		
Date: 17/02/2011	Drawn By: ...	Checked By: ...	

Symbol	Description	BRAND/NO.	SPECIFICATION
M1	Blade Motor		1.5kW 400V 3 Ph 50Hz
M2	Hydraulic Motor		0.37kW 400V 3 Ph 50Hz
M3	Coolant Pump		32W 400V 1 Ph 50Hz
KM1	Contactor (Blade)	C12D10 (NHD)	AC1:25A/600V CE
KM2	Contactor (Hydraulic)	C09D10 (NHD)	AC1:20A/600V CE
KM3	Contactor (Coolant Pump)	C09D10 (NHD)	AC1:20A/600V CE
FS1	Thermal Relay (Blade)	NTH-3.0A (NHD)	Ui:600Vac ith:6A CE
FS2	Thermal Relay (Hydraulic)	NTH-1.45A (NHD)	Ui:600Vac ith:6A CE
FS3	Thermal Relay (Coolant Pump)	RHU-0.16A (TECO)	Ui:690Vac ith:6A CE
T1	Transformer	138VA (SUN CHUAN)	1PH 138VA CE
SA1	Power Switch	NDS-40D (NHD)	Ui:690Vac ith:40A CE
SA5	Blade Speed Knob	ZH -HC-5-TR (KEDU)	AC-3 440V 16A CE
K2	Relay	LB4HN-24AC (RELAY)	24Vac 5A CE
K3	Relay	LB4HN-24AC (RELAY)	24Vac 5A CE
K1	Relay	LB2HN-24AC (RELAY)	24Vac 10A CE
FU1	Fuse	8A (QIAODIAN)	8A CE
FU2	Fuse	8A (QIAODIAN)	8A CE
FU3	Fuse	8A (QIAODIAN)	8A CE
FU4	Fuse	1A (QIAODIAN)	1A CE
FU5	Fuse	1A (QIAODIAN)	1A CE
FU6	Fuse	5A (CONQUER)	5A CE
KT1	Timer	H3-M1 (FOTEK)	24Vac CE
SQ4	Upper Limit	TZ-8111(TWCHT)	AC15 380V 10A IP65 CE
SQ5	Down Limit	TZ-8111(TWCHT)	AC15 380V 10A IP65 CE
SQ3	Blade Broken Sensor	TZ-8111(TWCHT)	AC15 380V 10A IP65 CE
SQ1	Saw Frame Cover Limit Switch	AZD-S11 (SHINOZAKI)	AC15 400V 2A IP65 CE
SB1	Emergency Switch (1B)	R2PNR4 (RENY)	Ui:600Vac ith:10A CE
SA3	Raise / Down Ternary Form Switch	NSS22-S0 (NHD)	Ui:600Vac ith:5A CE
SA4	Clamp / Release Ternary Form Switch	NSS22-S0 (NHD)	Ui:600Vac ith:5A CE
SA2	Manual / Auto Switch	NSS22-S2 (NHD)	Ui:600Vac ith:5A CE
SB2	Hydraulic Start Button	NJB22-F10 (NHD)	Ui:600Vac ith:5A CE
SB4	Auto Cutting Button	NJB22-F10 (NHD)	Ui:600Vac ith:5A CE
HL1	Power Indicator	NLD22-WA (NHD)	AC24V CE
SB3	Blade Stop Button	NPB22-F01 (NHD)	Ui:600Vac ith:5A CE
SB5	Blade Start with Manual Button	NPB22-F10 (NHD)	Ui:600Vac ith:5A CE
YV1	Saw Frame Down Valve	DSG-3C2-N-02 (YUSAN)	AC24V
YV2	Vise Clamp Valve	DSG-202-N-02 (YUSAN)	AC24V
YV3	Vise Release Valve	DSG-202-N-02 (YUSAN)	AC24V
YV4	Saw Frame Raise Valve	DSG-3C2-N-02 (YUSAN)	AC24V
HL2	Hydraulic Start Indicator	PL-BA9 (NHD)	24Vac 1W/440V
HL3	Auto Cutting Indicator	PL-BA9 (NHD)	24Vac 1W/440V