



JMD-2L JMD-2L DRO	Milling Drilling Center
------------------------------------	--------------------------------

50000987M..... 1~230V,50Hz
 50000988M..... 1~230V,50Hz

PARTS LIST

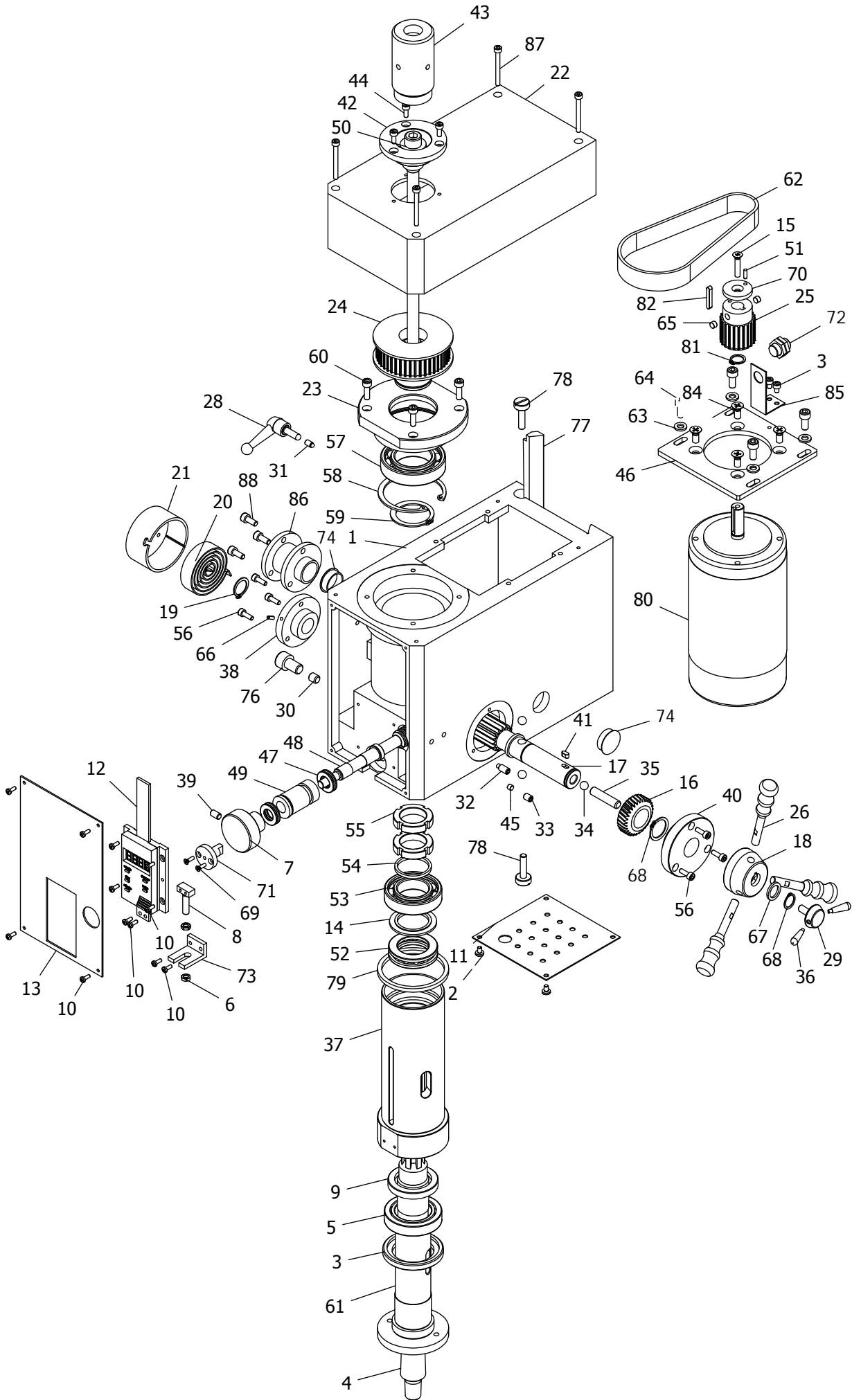


JPW Tool Group Hong Kong Limited
 98 Granville Road, Tsimshatsui East, Kowloon, Hong Kong, PRC
www.jettools.com

105082, : « »
www.jettools.ru, ., .17

Made in PRC /

Parts Breakdown For JMD-2/JMD-2L DRO Milling Drilling Center (I)



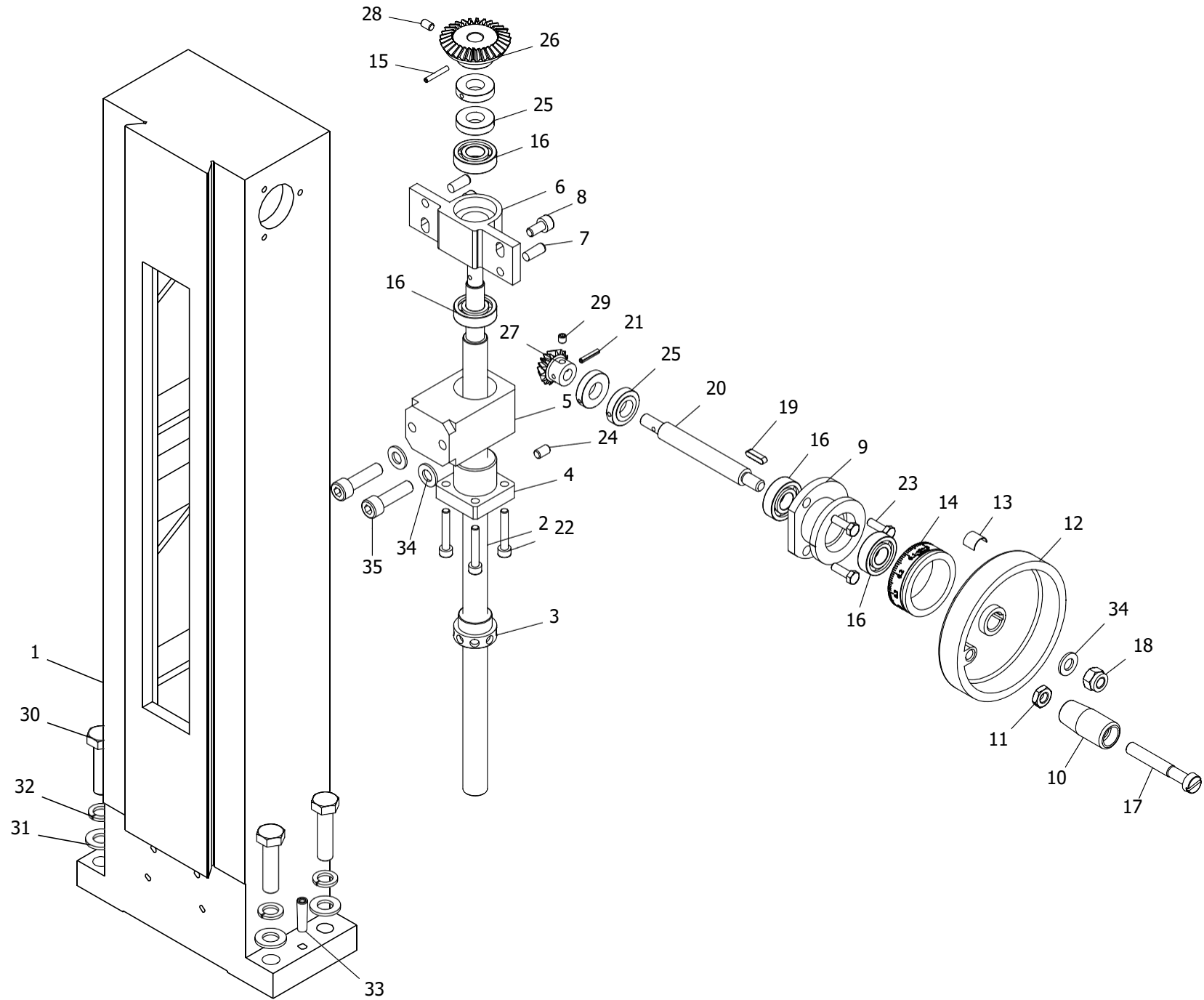
Part List for JMD-2/JMD-2L DRO Milling Drilling Center

No.	Part no.	Description	Size	Qty.
1	JMD2L-I-01	Spindle box		1
2	JMD2L-I-02	Cross recessed small pan head screw H M3 * 8	M4X6	4
3	JMD2L-I-03	Spindle below oil seal ring I		1
4	JMD2L-I-04	B16 taper shank		1
5	JMD2L-I-05	Cone roller bearing 32907	32907	1
6	JMD2L-I-06	Hexagon headed nut M5	M5	2
7	JMD2L-I-07	Fine feeding handwheel		1
8	JMD2L-I-08	Display square screw		1
9	JMD2L-I-09	Spindle sleeve below oil seal ring II		1
10	JMD2L-I-10	Cross recessed small pan head screw Z M3 * 8	M3X8	12
11	JMD2L-I-11	Base plate		1
12	JMD2L-I-12	Display assembly		1
13	JMD2L-I-13	Panel		1
14	JMD2L-I-14	Up washer II		1
15	JMD2L-I-15	Cross recessed counter head screws H M5 * 25	M5X25	1
16	JMD2L-I-16	Bevel gear		1
17	JMD2L-I-17	Gear shaft		1
18	JMD2L-I-18	Handle seat		1
19	JMD2L-I-18	Check ring 16	16	1
20	JMD2L-I-19	Clock spring		1
21	JMD2L-I-20	Clock spring cover		1
22	JMD2L-I-21	Spindle box cover		1
23	JMD2L-I-22	Bearing seat		1
24	JMD2L-I-23	Spindle timing pulley		1
25	JMD2L-I-74	Motor timing pulley		1
26	JMD2L-I-26	Handle		3
28	JMD2L-I-24	Small handle assembly		1
29	JMD2L-I-29	Tighten the top rod		1
30	JMD2L-I-25	Spindle sleeve locking shaft		1
31	JMD2L-I-26	Tighten the top rod		1
32	JMD2L-I-27	Slotted headless set screws round end M6 * 14	M6X14	1
33	JMD2L-I-28	Inner six angle fastening screws-flat end M6 * 8	M6X8	1
34	JMD2L-I-29	Ball 8	8	3
35	JMD2L-I-30	Locking small shaft		1
36	JMD2L-I-31	Small handle		2
37	JMD2L-I-32	Spindle sleeve		1
38	JMD2L-I-33	Shaft gear left support flange		1
39	JMD2L-I-34	Inner six angle fastening screws-flat end M6 * 10	M6X10	1
40	JMD2L-I-77	Shaft gear right support flange		1
41	JMD2L-I-35	Parallel key 4*8		1
42	JMD2L-I-36	Spindle up dust guard I		1
43	JMD2L-I-37	Spindle up dust guard II		1
44	JMD2L-I-38	Hexagon round head cap screw M4 * 10	M4X10	3

Part List for JMD-2/JMD-2L DRO Milling Drilling Center

No.	Part no.	Description	Size	Qty.
45	JMD2L-I-39	Eccentric sleeve locking block		1
46	JMD2L-I-46	Motor connect plate		1
47	JMD2L-I-40	Thrust ball bearing single 7/70		2
48	JMD2L-I-41	Worm shaft		1
49	JMD2L-I-42	Worm eccentric sleeve		1
50	JMD2L-I-43	Tighten the top rod		1
51	JMD2L-I-44	Round pin A3*10	A3X10	1
52	JMD2L-I-45	Thrust ball bearing single 8106	8106	1
53	JMD2L-I-46	Deep groove ball bearing 80106	80106	1
54	JMD2L-I-47	Up washer		1
55	JMD2L-I-48	Slotted round nut		2
56	JMD2L-I-49	Hexagon round head cap screw M4*12	M4X12	6
57	JMD2L-I-50	Deep groove ball bearing 80107	80107	1
58	JMD2L-I-51	Check ring 62	62	1
59	JMD2L-I-62	Check ring 35	35	1
60	JMD2L-I-53	Hexagon round head cap screw M5*16	M5X16	4
61	JMD2L-I-54	Spindle MT3		1
62	JMD2L-I-55	Timing belt		1
63	JMD2L-I-56	Washer 6	6	4
64	JMD2L-I-57	Hexagon round head cap screw M6*14	M6X14	4
65	JMD2L-I-65	Φ6 Magnet steel		2
66	JMD2L-I-58	Spring round pin 3*8		1
67	JMD2L-I-59	Adjust washer		1
68	JMD2L-I-60	Check ring		2
69	JMD2L-I-61	Cross recessed counter head screws H M3*10	M3X10	2
70	JMD2L-I-62	Washer		1
71	JMD2L-I-63	Spindle sleeve position shaft		1
72	JMD2L-I-64	Probe subassembly		2
73	JMD2L-I-65	Display fixed bracket		1
74	JMD2L-I-66	Plug		2
76	JMD2L-I-67	Hexagon round head cap screw M10*16	M10X16	1
77	JMD2L-I-68	Bevel wedge		1
78	JMD2L-I-69	Wedge screw		2
79	JMD2L-I-70	Sleeve limited washer		1
80	JMD2L-I-80	750W DC motor		1
81	JMD2L-I-81	Check ring 12	12	1
82	JMD2L-I-82	Parallel key 4*25	4X25	1
83	JMD2L-I-83	Hexagon round head cap screw M4*6	M4X6	2
84	JMD2L-I-84	Cross recessed counter head screws H M6*14	M6X14	4
85	JMD2L-I-85	Probe bracket		1
86	JMD2L-I-71	Attachment bracket		1
87	JMD2L-I-83	Hexagon round head cap screw M4*40	M4X40	4
88	JMD2L-I-72	Hexagon headed bolt M5*12	M5X12	3

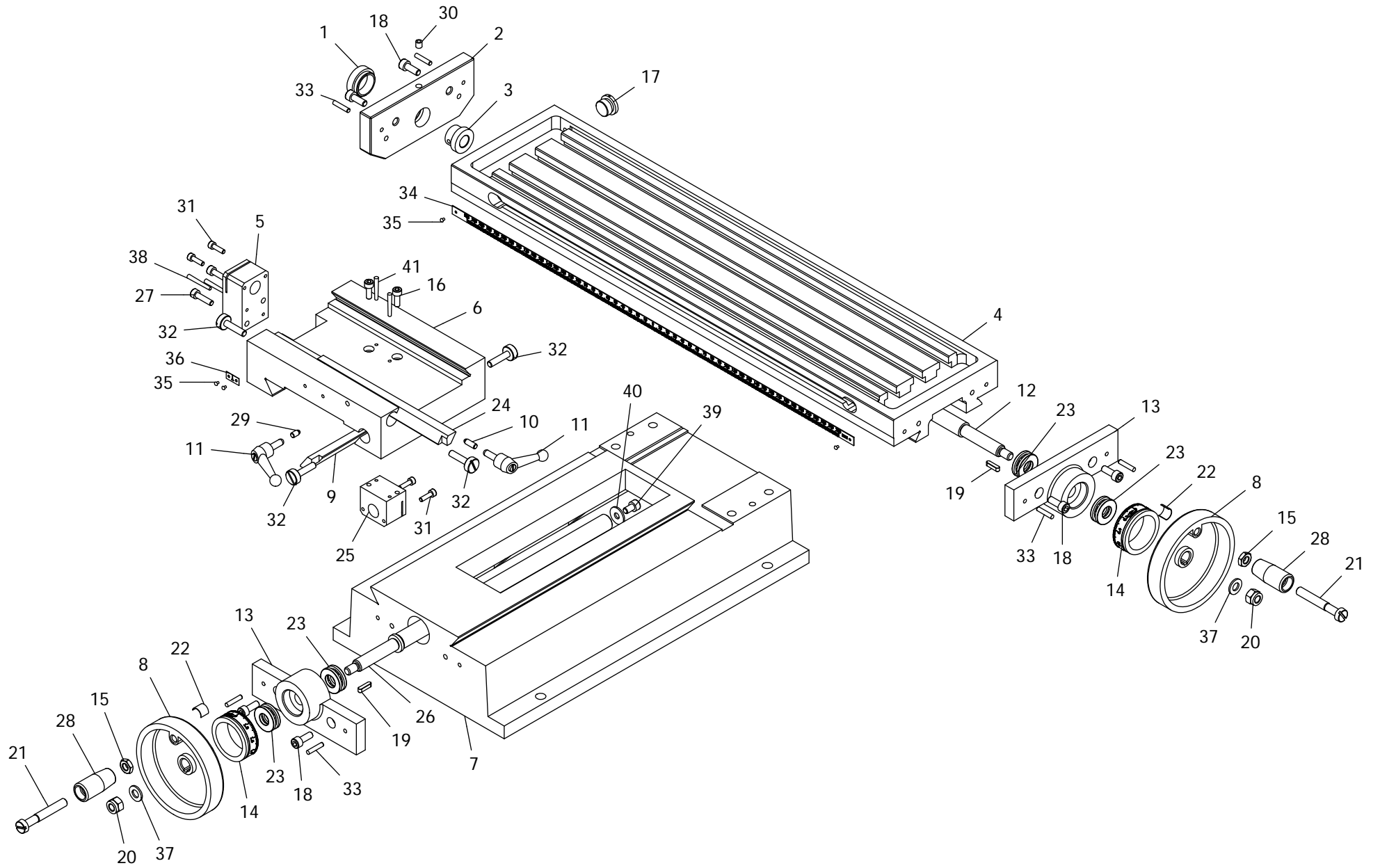
Parts Breakdown For JMD-2/JMD-2L DRO Milling Drilling Center (II)



Part List for JMD-2L/JMD-2L DRO Milling Drilling Center

No.	Part no.	Description	Size	Qty.
1	JMD2L-II-01	Column		1
2	JMD2L-II-02	Metric rise and down leadscrew		1
3	JMD2L-II-03	Metric rise and down locking nut		1
4	JMD2L-II-04	Metric rise and down leadscrew nut		1
5	JMD2L-II-05	Column nut support		1
6	JMD2L-II-06	Leadscrew support		1
7	JMD2L-II-07	Taper pins with internal thread	6X16	2
8	JMD2L-II-08	Hexagon socket head cap screw	M6X12	2
9	JMD2L-II-09	Rise and down support seat		1
10	JMD2L-II-10	Handle		1
11	JMD2L-II-11	Hex nut	M8	1
12	JMD2L-II-12	Handle wheel		1
13	JMD2L-II-13	Spring piece		1
14	JMD2L-II-14	Metric rise and down scale dial		1
15	JMD2L-II-15	Spring round pin	3X20	1
16	JMD2L-II-16	Deep groove ball bearing	6001	4
17	JMD2L-II-17	Slotted large cheese head screws	85X55	1
18	JMD2L-II-18	Hex locking nut	M8	1
19	JMD2L-II-19	Parallet key	4X16	1
20	JMD2L-II-20	Rise and down shaft		1
21	JMD2L-II-21	Spring round pin	3X16	1
22	JMD2L-II-22	Hexagon socket head cap screw	M5X30	4
23	JMD2L-II-23	Hexagon headed bolt	M5X16	3
24	JMD2L-II-24	Inner six angle locking screws-flast end	M6X10	1
25	JMD2L-II-25	Locking nut		4
26	JMD2L-II-26	Big bevel gear wheel		1
27	JMD2L-II-27	Small bevel gear wheel		1
28	JMD2L-II-28	Inner six angle locking screws-cone end	M5X8	1
29	JMD2L-II-29	Inner six angle locking screws-cone end	M5X5	1
30	JMD2L-II-30	Hexagon headed bolt	M10X40	4
31	JMD2L-II-31	Washer	10	4
32	JMD2L-II-32	Spring washer	10	4
33	JMD2L-II-33	Taper pins with internal thread	6X24	2
34	JMD2L-II-34	Washer	8	1
35	JMD2L-II-35	Hexagon socket head cap screw	M8X30	2

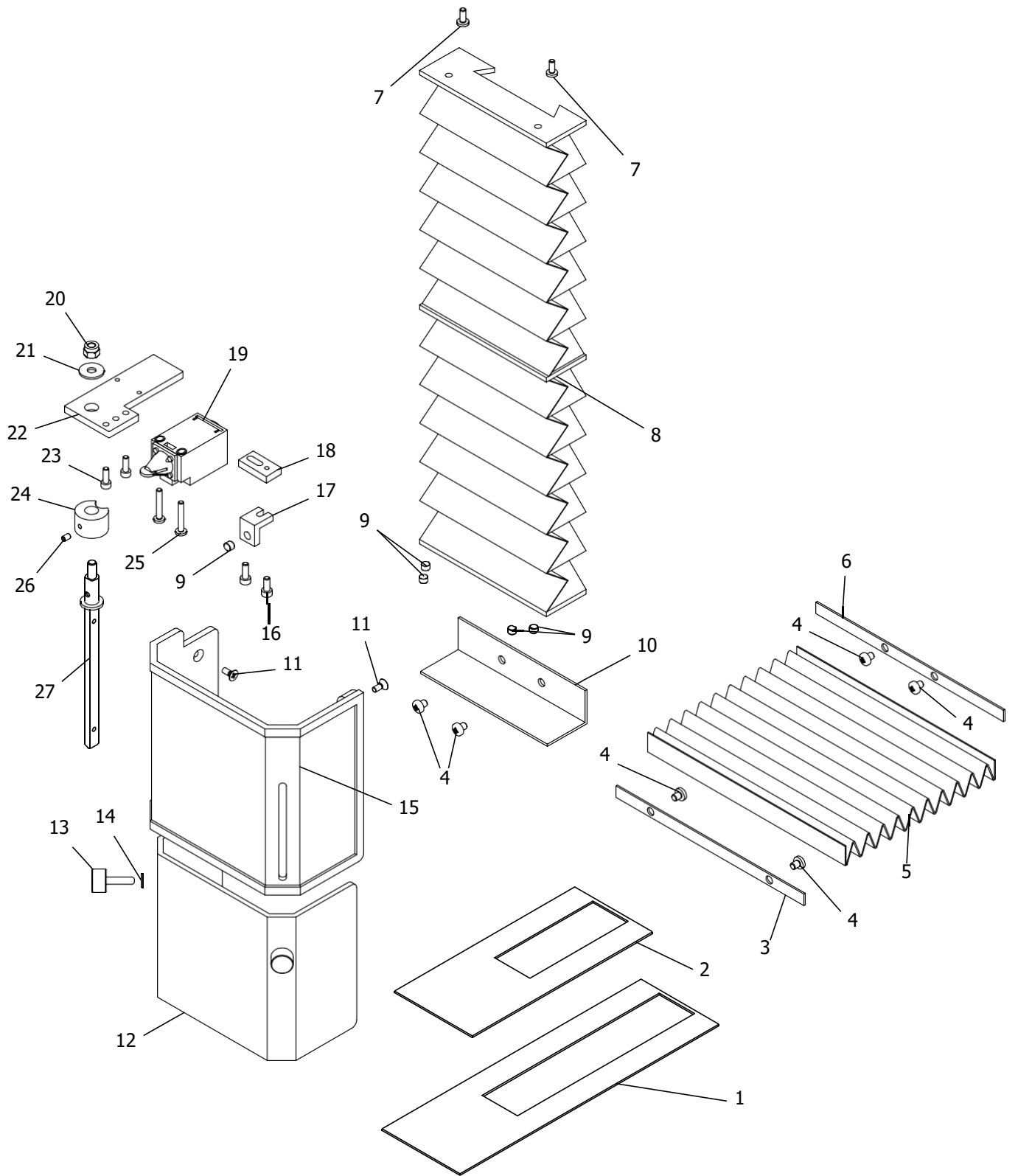
Parts Breakdown For JMD-2/JMD-2L DRO Milling Drilling Center (III)



Part List for JMD-2/JMD-2L DRO Milling Drilling Center

No.	Part no.	Description	Size	Qty.
1	JMD2L-III-01	End cap of left support		1
2	JMD2L-III-02	Left end cover		1
3	JMD2L-III-03	Left sleeve		1
4	JMD2L-III-04	Work table		1
5	JMD2L-III-05	Metric longitudinal leadscrew nut		1
6	JMD2L-III-06	Saddle		1
7	JMD2L-III-07	Base		1
8	JMD2L-III-08	Longitudinal leadscrew handwheel		1
9	JMD2L-III-09	Cross bevel wedge		1
10	JMD2L-III- 10	Longitudinal wedge locking crown bar		1
11	JMD2L-III- 11	Small handle assembly		2
12	JMD2L-III- 12	Metric longitudinal leadscrew		1
13	JMD2L-III- 13	Longitudinal cross leadscrew bearing seat		2
14	JMD2L-III- 14	Metric longitudinal/cross scale dial		2
15	JMD2L-III- 15	Nut M8		2
16	JMD2L-III- 16	Screw M5*20		4
17	JMD2L-III- 17	End cap		1
18	JMD2L-III- 18	Hexagon socket head cap screw M6*16	M6X16	6
19	JMD2L-III- 19	Parallet key 4*16	4X16	1
20	JMD2L-III-20	Hexagon locking nut M8	M8	1
21	JMD2L-III-21	Round screw		2
22	JMD2L-III-22	Sping piece		2
23	JMD2L-III-23	Thrust ball bearing 8101	8101	4
24	JMD2L-III-24	Longitudinal bevel wedge		1
25	JMD2L-III-25	Metric cross leadscrew nut		1
26	JMD2L-III-26	Metric cross leadscrew		1
27	JMD2L-III-27	Hexagon socket head cap screw M5*20	M520	2
28	JMD2L-III-28	Handle series # 16040026 and down		2
29	JMD2L-III-29	Tighten the top rod		1
30	JMD2L-III-30	Pressure with pressure column oil cup 6	6	1
31	JMD2L-III-31	Hexagon socket head cap screw M4*14	M4X14	4
32	JMD2L-III-32	Wedge screw		4
33	JMD2L-III-33	Round pin A4*20	A420	6
34	JMD2L-III-34	Scale height		1
35	JMD2L-III-35	Label rivet 2*3	2X3	4
36	JMD2L-III-36	Zero lebel		1
37	JMD2L-III-37	Washer 8	8	1
38	JMD2L-III-38	Taper pin A3*30	A3X30	2
39	JMD2L-III-39	Hexagon socket head cap screw M6*10	M6X10	1
40	JMD2L-III-40	Washer 6	6	1
41	JMD2L-III-41	Taper pin B3*26	B326	2

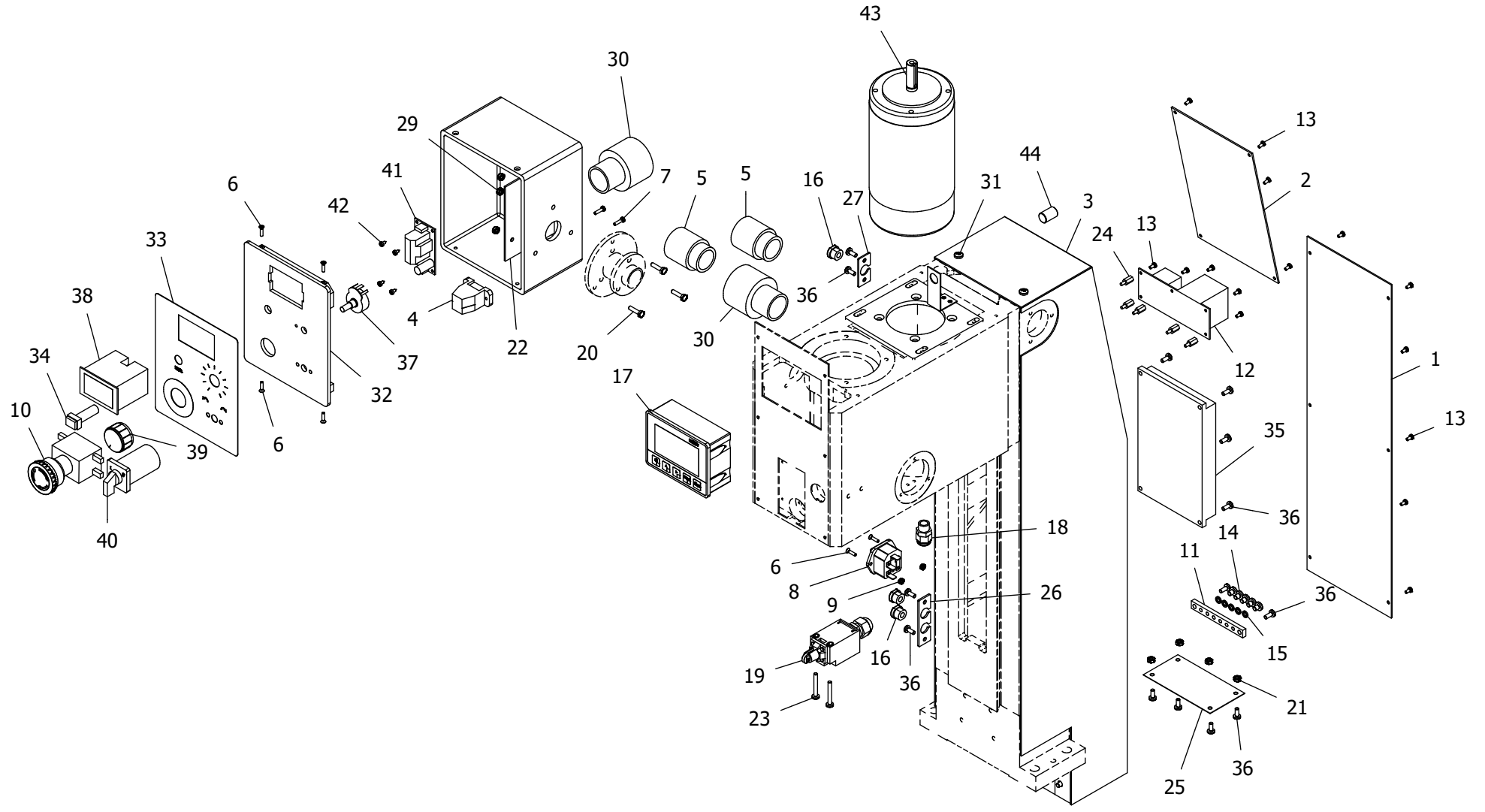
Parts Breakdown For JMD-2/JMD-2L DRO Milling Drilling Center (IV)



Part List for JMD-2/JMD-2L DRO Milling Drilling Center

No.	Part no.	Description	Size	Qty.
1	JMD2L-IV-01	Splash guard I		1
2	JMD2L-IV-02	Splash guard II		1
3	JMD2L-IV-03	Filler strip		1
4	JMD2L-IV-04	Cross recessed counter head screws	M4X6	6
5	JMD2L-IV-05	Dust guard		1
6	JMD2L-IV-06	Dead plate		1
7	JMD2L-IV-07	Cross recessed counter head screws	M4X10	2
8	JMD2L-IV-08	Rise and down guideway cover		1
9	JMD2L-IV-09	Magnet steel	Ø6	5
10	JMD2L-IV-10	Shield baffle		1
11	JMD2L-IV-11	Cross recessed counter head screws	M4X10	3
12	JMD2L-IV-12	The inner shield		1
13	JMD2L-IV-13	Knurled screws	M5X20	2
14	JMD2L-IV-14	Washer	5	2
15	JMD2L-IV-15	Outer protective cover		1
16	JMD2L-IV-16	Hexagon socket head cap screw	M4X10	1
17	JMD2L-IV-17	Block		1
18	JMD2L-IV-18	Connecting plate		1
19	JMD2L-IV-19	Safety limit switch		1
20	JMD2L-IV-20	Hexagon locking nut	M6	1
21	JMD2L-IV-21	Washer 6	6	1
22	JMD2L-IV-22	Support plate		1
23	JMD2L-IV-23	Hexagon socket head cap screw	M4X12	3
24	JMD2L-IV-24	Spacer bush		1
25	JMD2L-IV-25	Cross recessed counter head screws	M4X25	2
26	JMD2L-IV-26	Inner six angle locking screw-cone end metric	M4X6	1
27	JMD2L-IV-27	Rotate shaft		1

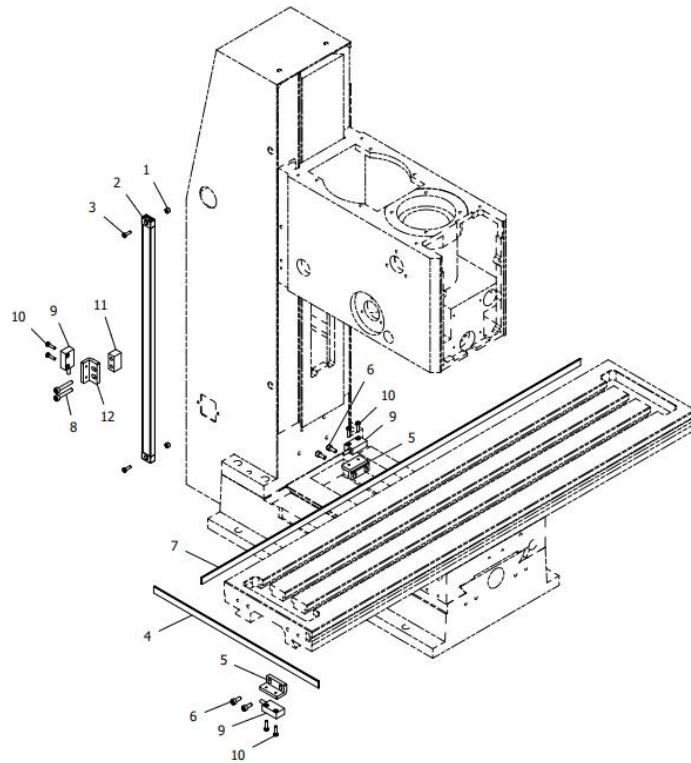
Parts Breakdown For JMD-2/JMD-2L DRO Milling Drilling Center (V)



Part List for JMD-2/JMD-2L DRO Milling Drilling Center

No.	Part no.	Description	Size	Qty.
1	JMD2L-V-01	Lower cover plate		1
2	JMD2L-V-02	Upper cover plate		1
3	JMD2L-V-03	Rear hood assembly		1
4	JMD2L-V-04	USB socket assembly		1
5	JMD2L-V-05	Fast hose connector		2
6	JMD2L-V-06	Screw M3*12		6
7	JMD2L-V-07	Screw M3*12		2
8	JMD2L-V-08	DB-14F Fuse holder		1
9	JMD2L-V-09	Nut M3		2
10	JMD2L-V- 10	Emergency stop switch		1
11	JMD2L-V- 11	Grounding row		1
12	JMD2L-V- 12	DC power supply board		1
13	JMD2L-V- 13	Screw M3*6		15
14	JMD2L-V- 14	Screw M5*6		5
15	JMD2L-V- 15	Spring washer 5		5
16	JMD2L-V- 16	Wire buckle		3
17	JMD2L-V- 17	MG10V Digital display		1
18	JMD2L-V- 18	M12 Draw lock		1
19	JMD2L-V- 19	QSK Safety limit switch		1
20	JMD2L-V-20	Bolt M4*16		3
21	JMD2L-V-21	Nut M4		11
22	JMD2L-V-22	Electrical box linings		1
23	JMD2L-V-23	Screw M4*30		2
24	JMD2L-V-24	HTS-310 Lsolation pillar		5
25	JMD2L-V-25	Lower dust screen		1
26	JMD2L-V-26	Wire clip holder		1
27	JMD2L-V-27	Wire clip holder		1
28	JMD2L-V-28	Support plate		1
29	JMD2L-V-29	Electrical box		1
30	JMD2L-V-30	Fast hose connector		2
31	JMD2L-V-31	Screw M5*8		4
32	JMD2L-V-32	Electrical box cover		1
33	JMD2L-V-33	Switch label		1
34	JMD2L-V-34	Yellow rectangular indicato		1
35	JMD2L-V-35	PC Board		1
36	JMD2L-V-36	Screw M4*10		14
37	JMD2L-V-37	Potentiometer		1
38	JMD2L-V-38	Digital display device		1
39	JMD2L-V-39	Knob		1
40	JMD2L-V-40	Change-over switch		1
41	JMD2L-V-41	Power strip		1
42	JMD2L-V-42	Screw ST2.9*6.5		4
43	JMD2L-V-43	DC Motor		1
44	JMD2L-V-44	Probe		1

Parts Breakdown For JMD-2/JMD-2L DRO Milling Drilling Center (VI)



Part List for JMD-2L DRO Milling Drilling Center

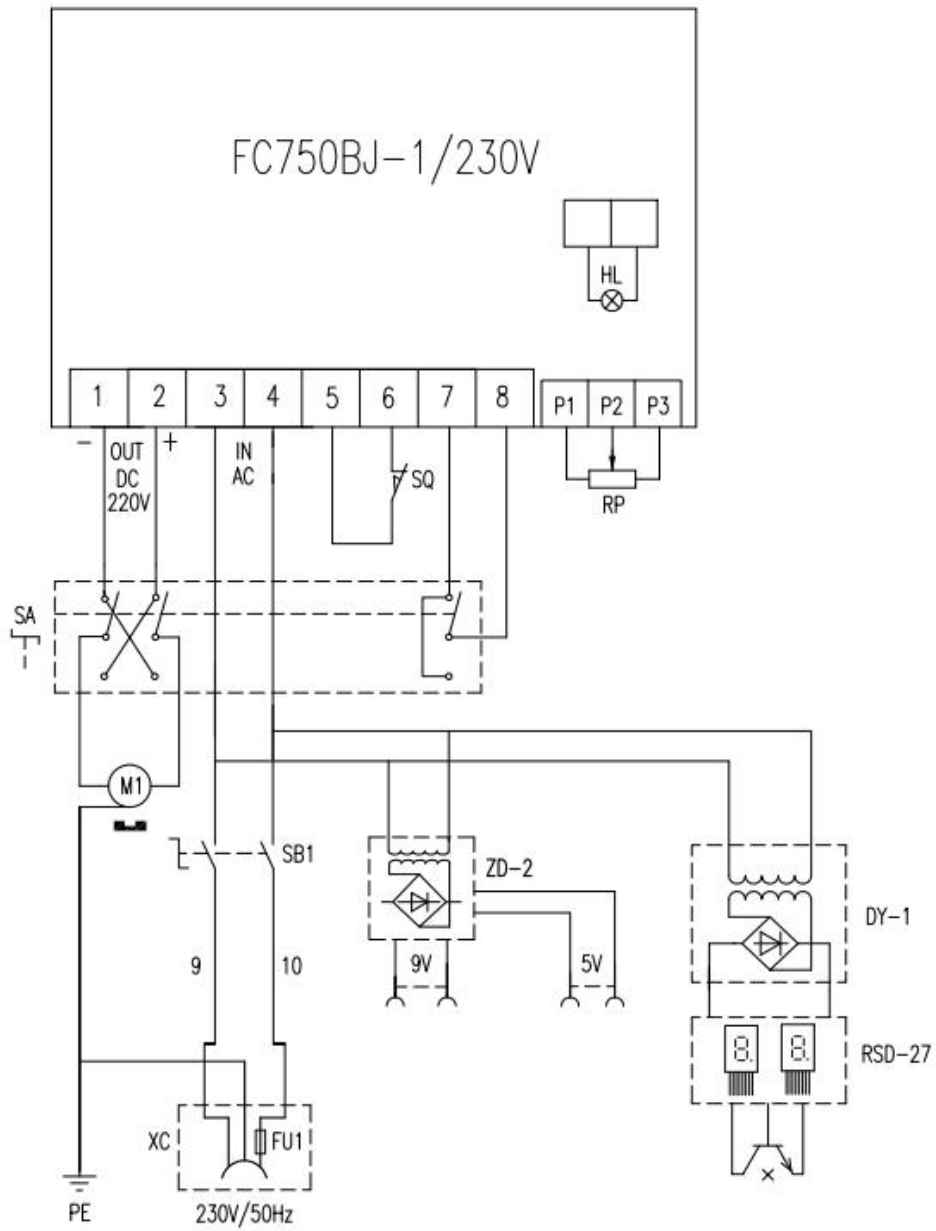
No.	Part no.	Description	Size	Qty.
1	JMD2LDRO-VI-01	Washer JMD-2L DRO		2
2	JMD2LDRO-VI-02	X-axis magnetic ruler assembly for JMD-2L DRO		1
3	JMD2LDRO-VI-03	Screw M3*10 JMD-2L DRO	M3X10	2
4	JMD2LDRO-VI-04	X-axis magnetic ruler JMD-2L DRO		1
5	JMD2LDRO-VI-05	Reader support for JMD-2L DRO		2
6	JMD2LDRO-VI-06	Screw for JMD-2L DRO	M4X10	4
7	JMD2LDRO-VI-07	X-axis magnetic ruler for JMD-2L DRO		1
8	JMD2LDRO-VI-08	Cross recessed counter head screws for JMD-2L DRO	M4X25	2
9	JMD2LDRO-VI-09	MG10V DRO with readers assembly for JMD-2L DRO		3
10	JMD2LDRO-VI-10	Screw for JMD-2L DRO	M3X12	6
11	JMD2LDRO-VI-11	Reader block for JMD-2L DRO		1
12	JMD2LDRO-VI-12	Z-axis reader block for JMD-2L DRO		1

Accessories Part List for JMD-2 L / JMD-2 L DRO Milling Drilling Center

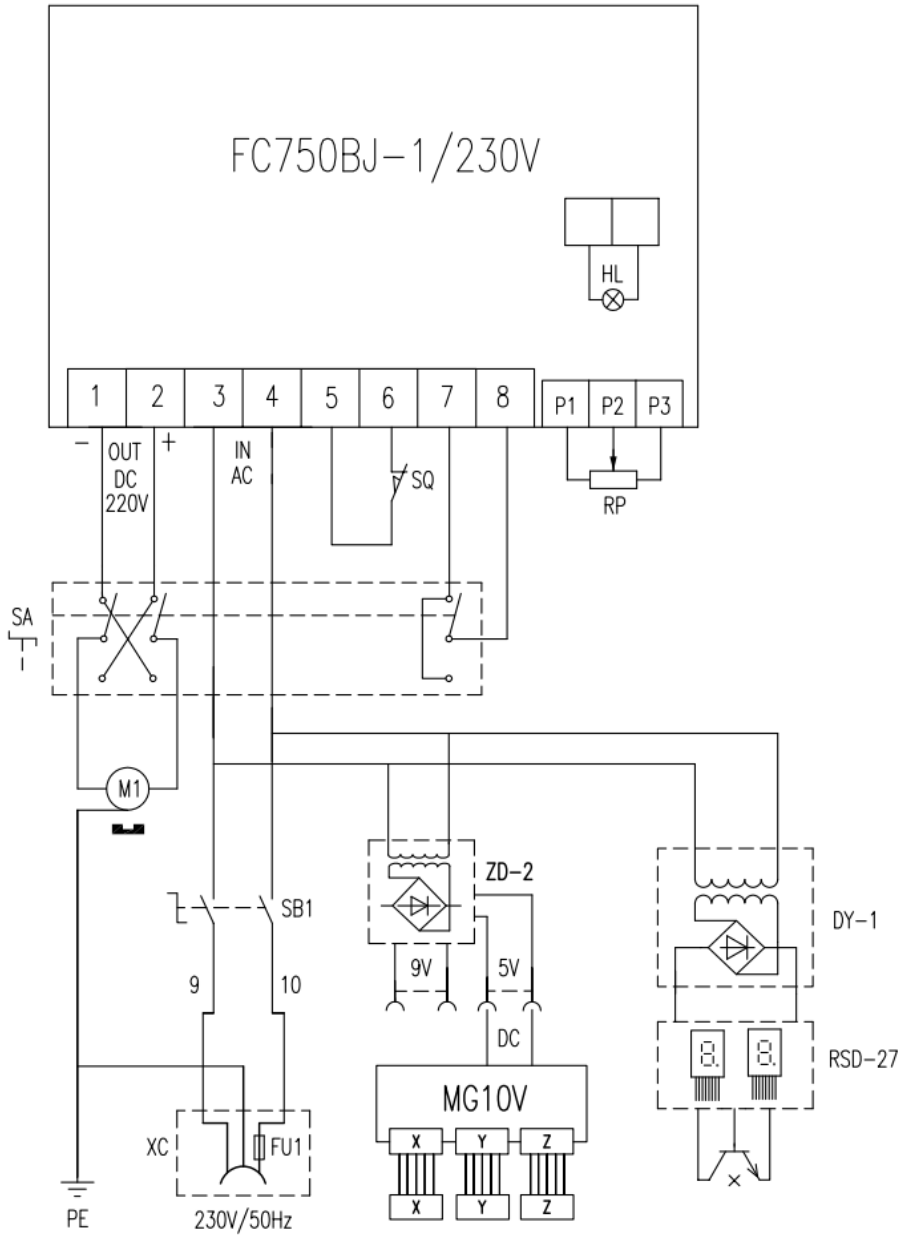
No.	Part no.	Description	Size	Qty.
1	JMD2L-ACCS-01	T nut		2
2	JMD2L-ACCS-02	Doubl end wrench	S1*S2:8*10, 14*17, 17*19	each 1
3	JMD2L-ACCS-03	L hex wrench assemble		1
4	JMD2L-ACCS-04	L hex wrench	S :3,4,5,6,8	each 1
5	JMD2L-ACCS-05	Slanting wedge		1
6	JMD2L-ACCS-06	Fuse	230V/8A	1
7	JMD2L-ACCS-07	Oil cup		1
8	JMD2L-ACCS-08	Drill Chuck (mounted on the machine)	1- 13mm , B16	1
9	JMD2L-ACCS-09	U wrench		1



JMD-2L..... 1~230V,50Hz



JMD-2L DRO..... 1~230V, 50Hz



Electric Elements Part List for JMD-2L/JMD-2L DRO Milling Drilling Center

Part No.	Code of elements	Description	Type
JMD2L-V-35	FC750BJ-1 /230	Main PC board	XMT-2375
JMD2L-I-80	M	DC motor	ZYT-750/230V
JMD2L-FU	FU	Fuse	8A
JMD2L-V-37	RP+SA2	Potentionmeter with switch	WH24-1,φ23
JMD2L-V-40	SA1	F/O/R switch	ZH-A
JMD2L-IV-19	SQ	Micro switch	
JMD2L-V-10	SB	Emergency switch	HY57B
JMD2L-V-34	HL	Yellow lamp	M14
JMD2L-V-08	XC	Socket with fuse	DB-14F
JMD2L-V-41	DYB-1	Power panel	DY-1
JMD2L-V-38	RSD-27	Digital readout	RSD-27
JMD2LDRO-V-34	ZD-1	DC power panel	
JMDX2LDRO-VI-09	MG10V	Display	MG10V
JMDX2LDRO-X2	X2	Rectangular connecting cable	
JMDX2LDRO-VI-05	RD50	Reader	RD50