



JRD-1100R Radial Arm Drill Press Machine

JRD-1100R....10000385T 3~400V, 50Hz

PARTS LIST



JPW Tool Group Hong Kong Limited

98 Granville Road, Tsimshatsui East, Kowloon, Hong Kong, PRC
www.jettools.com

Импортер в РФ: ООО «ИТА Технолоджи»

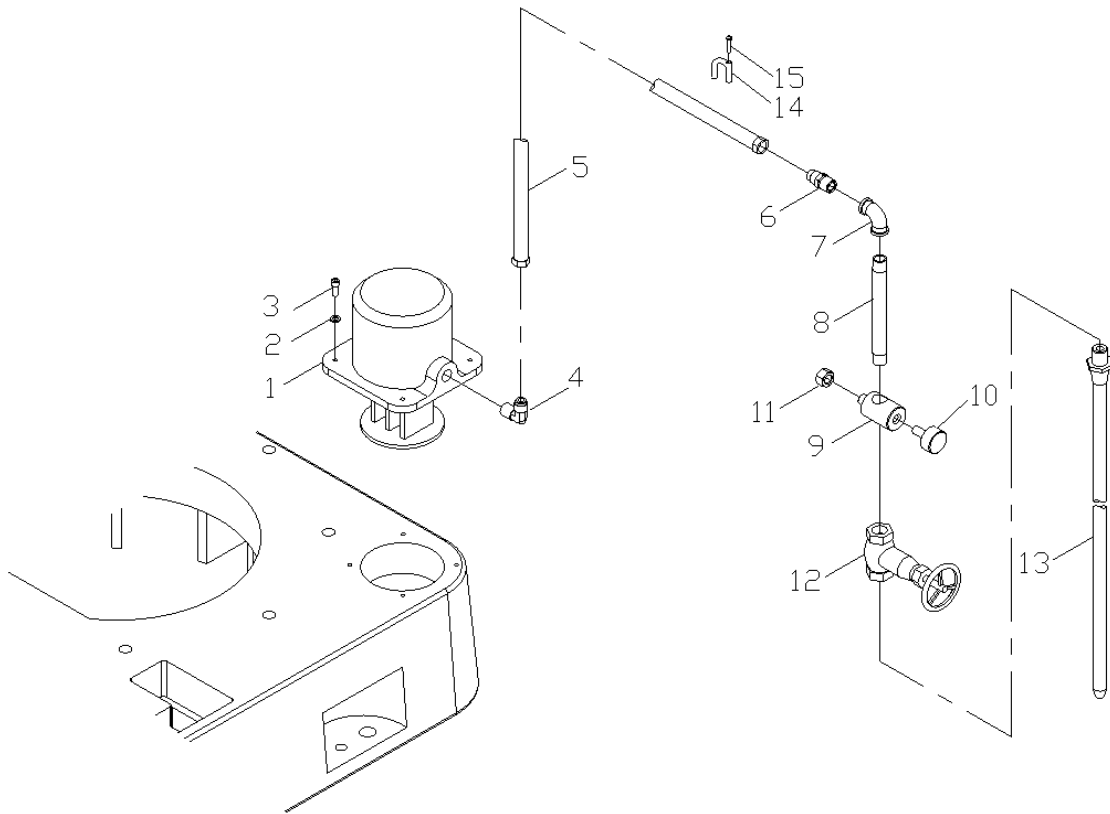
105082, Москва, Переведеновский пер., д. 17
www.jettools.ru

Made in Taiwan / Сделано на Тайване

P-10000385T

2022-09

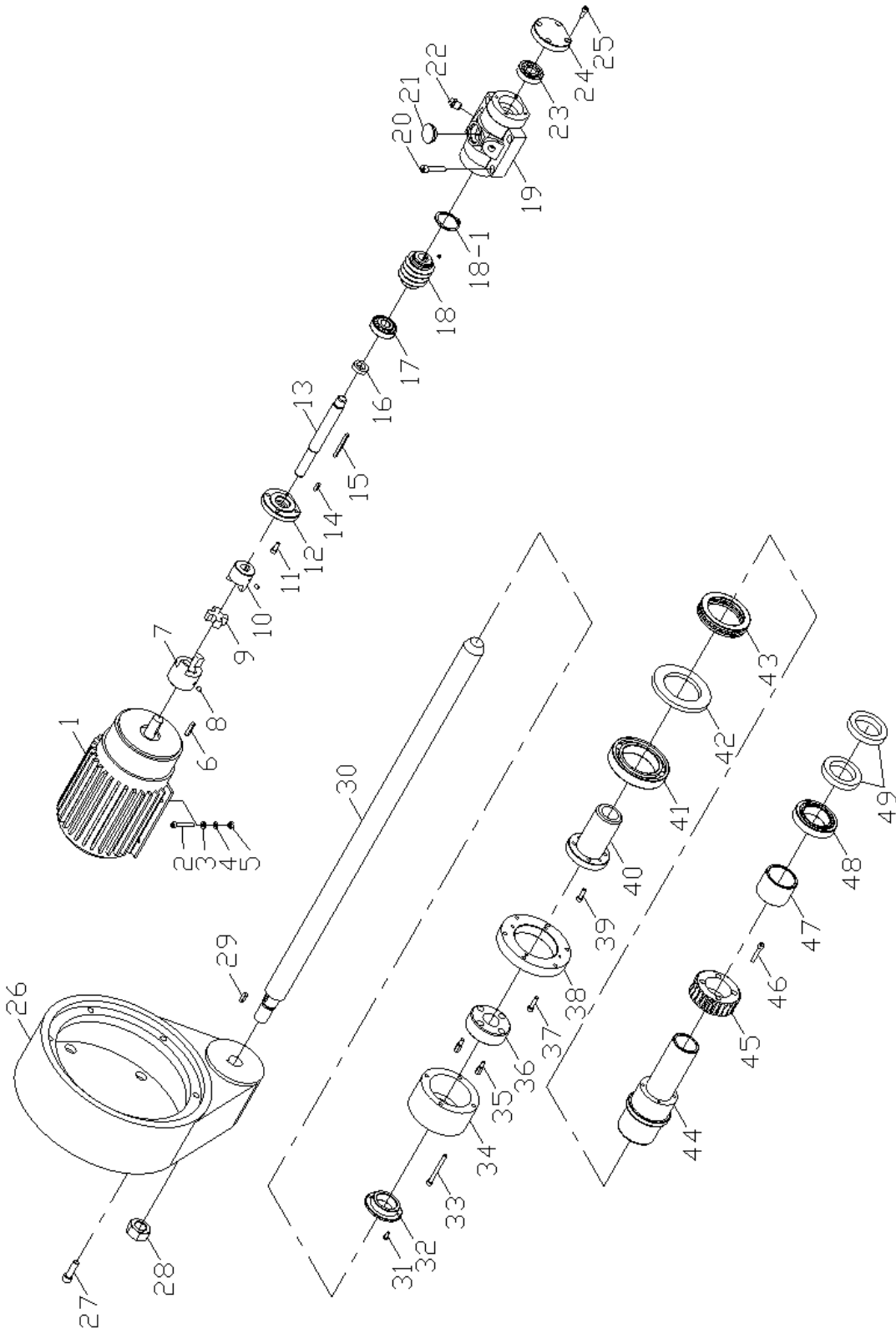
Cooling device Assembly



Cooling device Assembly Part list

Index No.	Part No.	Description	Size	Q'ty
1	JRD-720R-A01	Coolant Pump	130L 400V 3ph	1
2	M1602-M6	Washer	M6	4
3	M1401-M616	Bolt	M6x16L	4
4	M0602001	90°Elbow	PT3/8"xPS 3/8"x90°	1
5	M0506001	Net Plastic Pipe	PT3/8"x130"L	1
6	M0601002	Male Connector	PT3/8"xPS3/8"	1
7	M0611001	90°Elbow	3/8"x90°	1
8	M0510001	Rod	3/8"x15"L	1
9	10235	Tube Sleeve		2
10	M1317006	Knob	M10x25L	2
11	M1501003	Nut	1/2"	1
12	M0608001	Water Switch	3/8"	1
13	M0512001	Spraying Pipe	3/8"x450L	1
14	M1315017	Tube Bundle	UC-5	2
15	M1414006	Bolt	3/16"x3/8"L	2

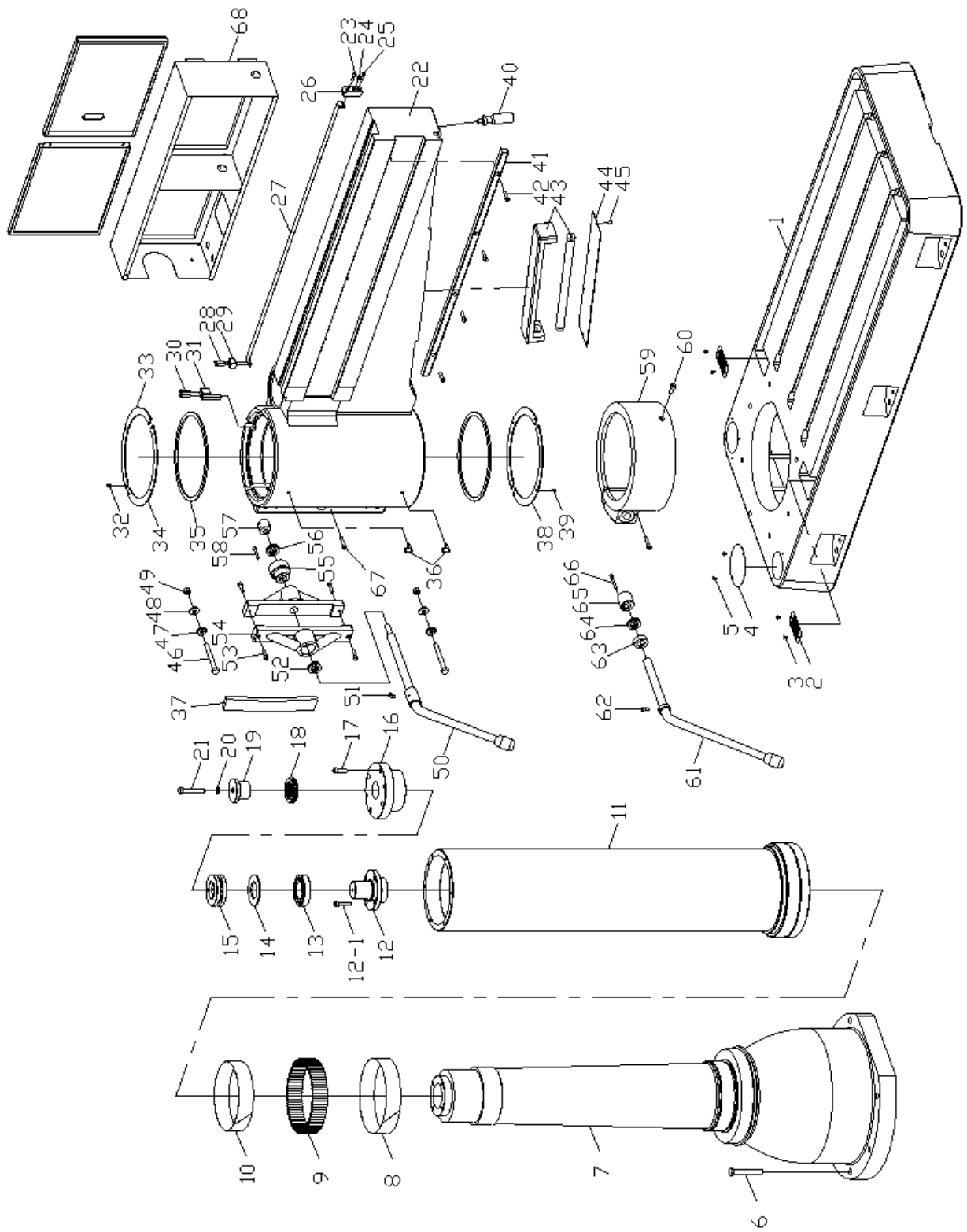
Lift mechanism Assembly



Lift Mechanism Assembly Part List

Index No.	Part No.	Description	Size	Q'ty
1	JRD-1100R-B01	Elevating Motor	0.75kW 400V 3Ph	1
2	M1401-M640	Bolt	M6x40L	4
3	M1606-M6	Spring Washer	M6	4
4	M1602-M6	Washer	M6	4
5	M1501-M6	Nut	M6	4
6	M1308-630	Key	6mmx30L	1
7	10238	Coupling		1
8	M1403-M68	Bolt	M6x8L	4
9	10397	Plastic Joint		1
10	10398	Coupling		1
11	M1401-M614	Bolt	M6x14L	4
12	10399	Bearing Cover-L		1
13	10400	Worm Shaft		1
14	M1328-520	Key	5mmx20L	1
15	M1328-555	Key	5mmx55L	1
16	M0702030	Oil Seal	TC17x28x7	1
17	M0909-30303	Bearing	30303	1
18	10401	Worm Shaft		1
18-1	M1312-S36	Retainer	S36	1
19	10402	Worm Hosing		1
20	M1401-M840	Bolt	M8x40L	4
21	M1323021	Gage Fuel Level		1
22	M0604006	Plug	PT1/4"	2
23	M0909-30303	Bearing	30303	1
24	10403	Bearing Cover-R		1
25	M1401-M614	Bolt	M6x14L	4
26	10239	Nut Cover		1
27	M1401-M1035	Bolt	M10x35L	6
28	M1503-M24	Nut	M24	1
29	M1328-620	Key	6mmx20L	1
30	10412	Leading screw		1
31	M1410-M512	Bolt	M5x12L	2
32	10415	Compressing Cover		1
33	M1401-M665	Bolt	M6x65L	4
34	10411	Safe Device Cover		1
35	10177	Bolt		2
36	10410	Safety Nut		1
37	M1401-M625	Bolt	M6x25L	6
38	10409	Bearing Cover		1
39	M1401-M620	Bolt	M6x20L	4
40	10408	Brass Sleeve		1
41	M0901-6014ZZ	Bearing	6014ZZ	1
42	10407	Collar		1
43	M0911-51114	Bearing	51114	1
44	10406	Up-down Rolling Shaft		1
45	10405	Worm Gear		1
46	M1401-M635	Bolt	M6x35L	4
47	10404	Collar		1
48	M0909-32010	Bearing	32010	1
49	M0702040	Oil Seal	TC50x72x12	2

Column Mechanism Assembly

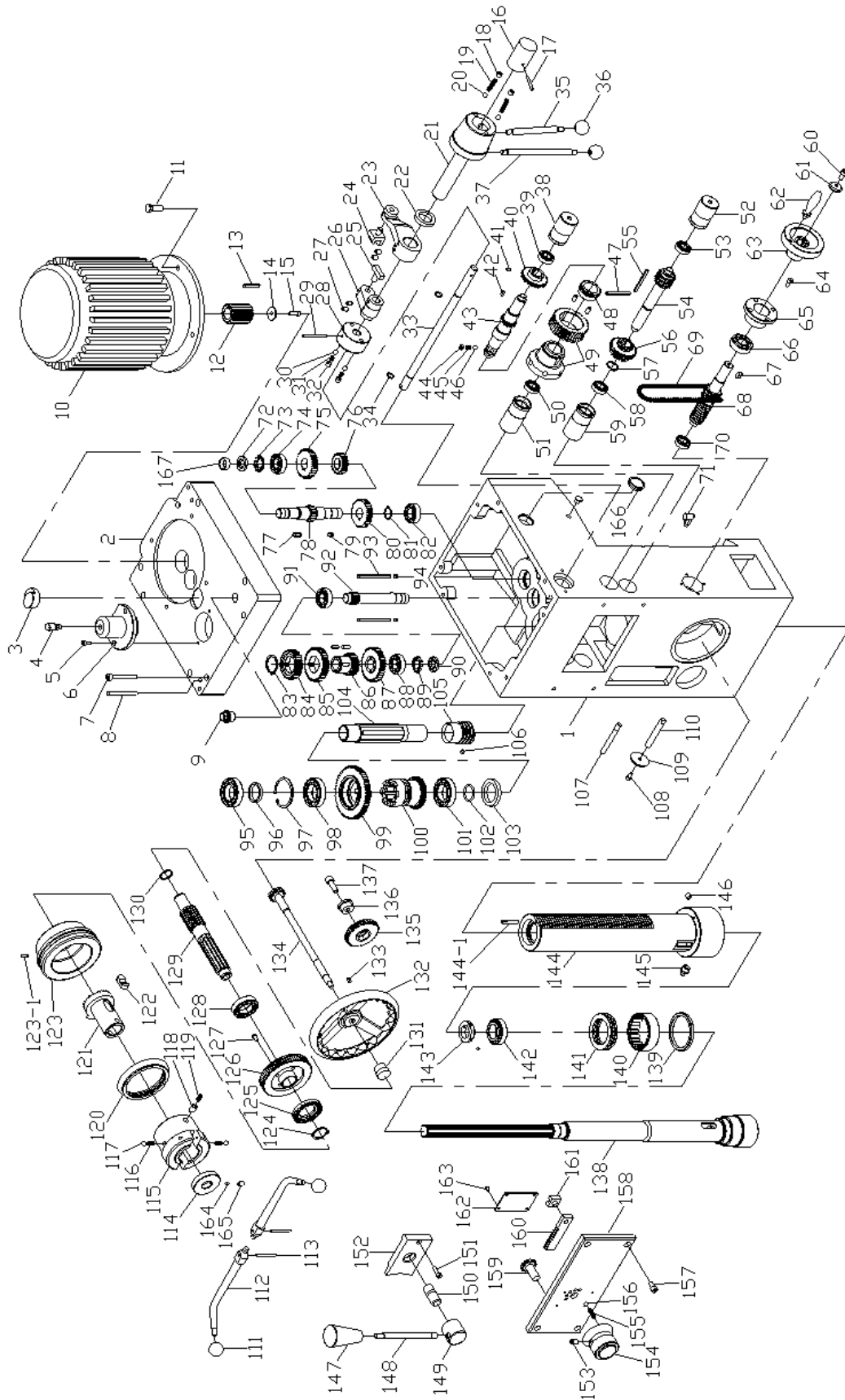


Column Mechanism Assembly Part List

Index No.	Part No.	Description	Size	Q'ty
1	10183	Base		1
2	10277	Filter Screen		2
3	M1414006	Bolt	3/16"x3/8"L	4
4	10037	Cover		1
5	M1414006	Bolt	3/16"x3/8"L	2
6	M1402001	Bolt	M18x100L	7
7	10184	Internal Column		1
8	10201	Steel Band		1
9	10243	Needle		80
10	10200	Steel Band		1
11	10185	Steel Band		1
12	10248	Bearing cover of the top		1
12-1	M1401-M1040	Bolt	M10x40L	4
13	M0901-6211	Bearing	6211	1
14	10249	Washer		1
15	M0911-3911	Bearing	3911	1
16	10245	Fixed Bearing Cover		1
17	M1401-M1025	Bolt	M10x25L	4
18	M0911-51111	Bearing	51111	1
19	10246	Bearing cover of the top		1
20	M1606001	Spring Washer	1/2"	1
21	M1402008	Bolt	1/2"-12Nx3"L	1
22	10189	Arm		1
23	M1401-M625	Bolt	M6x25L	2
24	M1403-M812	Bolt	M8x12L	2
25	M1401-M625	Bolt	M6x25L	1
26	10027	Fixed Flange		1
27	10193	Steel Band		1
28	M1401-M620	Bolt	M6x20L	2
29	10192	Fixed Flange		1
30	M1401-M630	Bolt	M6x30L	2
31	10032	Key		1
32	M1410-M610	Bolt	M6x10L	6
33	10875	Compressing Cover		1
34	10187	Compressing Cover		1
35	M0809001	Dust Seal	5mm	2
36	M1323019	Cup Oil	PT1/8"x90°	2
37	M0809002	Dust Seal	12mm	1
38	10187	Compressing Cover		2
39	M1410-M610	Bolt	M6x10L	6
40	10033	Handle		1
41	10257	Arm Rack		1
42	M1401-M830	Bolt	M8x30L	4
43	E1701002	Lamp	FS51441	1
44	10194	Acrylic Cover		1
45	M1425001	Bolt	3/16"x3/8"L	12
46	M1402009	Bolt	1/2"x4-1/2"L	2
47	10040	Washer		2
48	10040	Washer		2
49	M1501003	Nut	1/2"	2

Index No.	Part No.	Description	Size	Q'ty
50	10186	Handle		1
51	M1401-M816	Bolt	M8x16L	1
52	M0911-51105	Bearing	51105	1
53	M1401-M830	Bolt	M8x30L	4
54	10188	Fixed Clamping Block		2
55	10195	Nut		1
56	M0911-51105	Bearing	51105	1
57	10196	Eccentric Shaft		1
58	M1401-M640	Bolt	M6x40L	1
59	10199	Ring Clamp		1
60	M1401-M1025	Bolt	M10x25L	1
61	10190	Knob		1
62	M1401-M816	Bolt	M8x16L	1
63	10191	Bushing		1
64	M0911-51105	Bearing	51105	1
65	10036	Nut		1
66	M1401-M655	Bolt	M6x55L	1
67	M1401-M840	Bolt	M8x40L	2
68	10236	Electric Control Box		1

Gear box Assembly



Gear box Assembly Part List

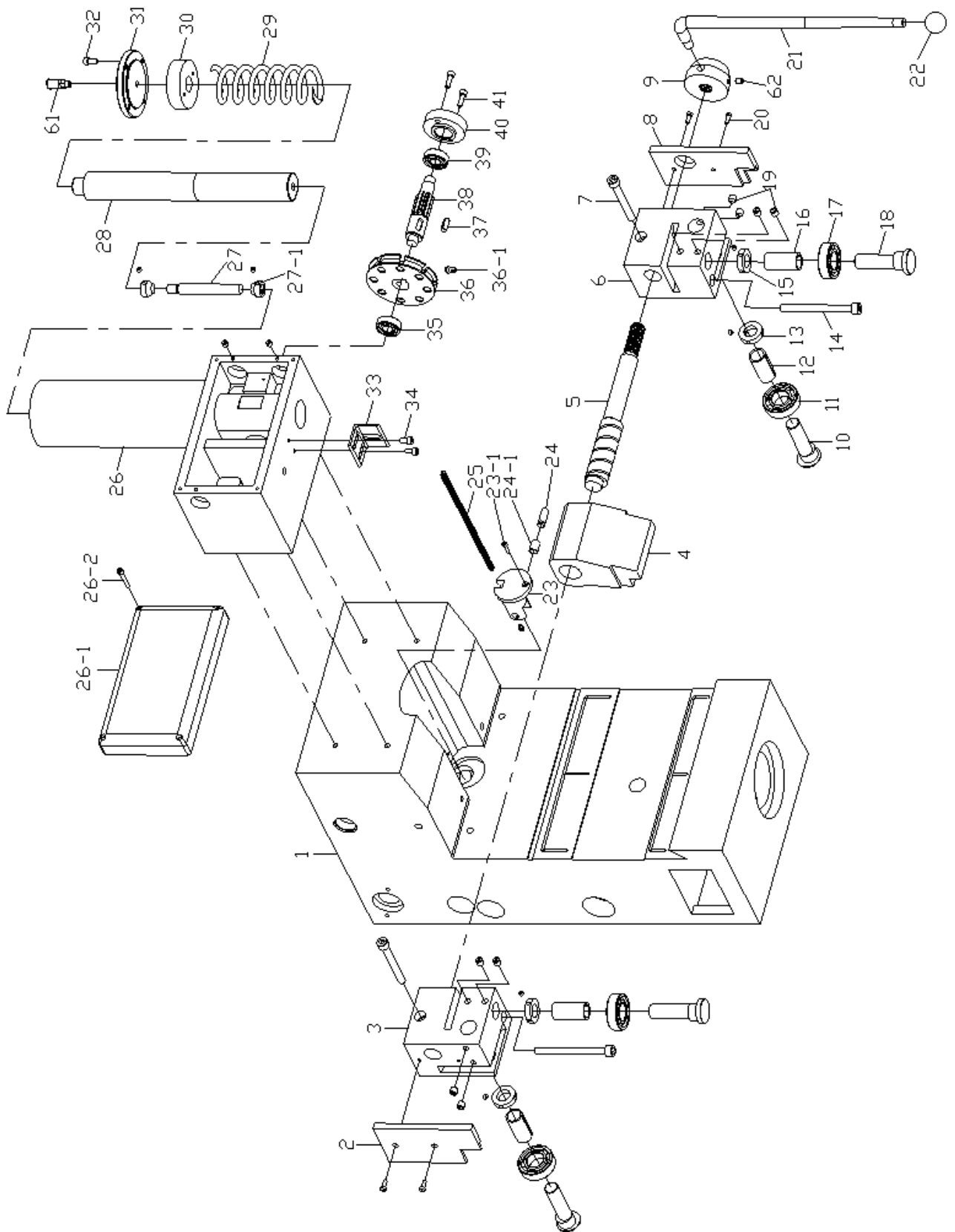
Index No.	Part No.	Description	Size	Q'ty
1	10204	Gear Box		1
2	10205	Gear Box Cover		1
3	10359	Gasket		1
4	M1321002	Grease Nipple	PT1/8"	1
5	M1401-M614	Bolt	M6x14L	2
6	10119	Spindle Cover		1
7	M1401-M865	Bolt	M8x65L	8
8	M1303-775	Taper Pin	#7x75L	2
9	M0604005	Plug	PT1/2"	1
10	JRD-1100R-D10	Motor	2.2/1.1kW 4P 8P	1
11	M1402-M1030	Bolt	M10x30L	4
12	10046	Motor Gear		1
13	M1308-640	Key	6mmx40L	1
14	10047	Washer		1
15	M1401-M620	Bolt	M6x20L	1
16	10318	Feed Speed Selector		1
17	M1305-540	Spring Pin	5mmx40L	1
18	M1403-M1010	Bolt	M10x10L	2
19	10681	Spring		2
20	M1323025	Ball Steel	5/16"	2
21	10322	Three Step Speed Change Lever Adapter		1
22	M0702035	Oil Seal	TC30x45x8	1
23	10320	Speed Change Rocket Arm		1
24	10068	Gear Shifter lever		1
25	10066	Gear Shifter lever		1
26	10065	Speed Change Rocker Arm		1
27	M1403-M812	Bolt	M8x12L	4
28	10325	Feed Speed Selector		1
29	M1305-560	Spring Pin	5mmx60L	1
30	M1323025	Ball Steel	5/16"	2
31	10678	Spring		2
32	M1403-M1010	Bolt	M10*10L	2
33	10206	Spindle Change Shaft		1
34	M0801-P12	"O" Ring	P12	2
35	10323	Three Step Speed Change Lever		1
36	M1317008	Knob	3/8" ψ 30	2
37	10324	Three Step Speed Change Lever		1
38	10208	Bushing		1
39	M0901-6002ZZ	Bearing	6002ZZ	1
40	10078	Gear		1
41	M1403-M68	Bolt	M6x8L	1
42	M1328-512	Key	5mmx12L	1
43	10321	Gear Shaft		1
44	M1403-M106	Bolt	M10x6L	6
45	10677	Spring		6
46	M1323025	Ball Steel	5/16"	6
47	M1305-540	Spring Pin	5mmx40L	1
48	10077	Gear		1
49	10076-100327	Worm Gera & Worm Gear Sleeve		1
50	M0901-6002ZZ	Bearing	6002ZZ	1
51	10207	Bushing		1

Index No.	Part No.	Description	Size	Q'ty
52	10208	Bushing		1
53	M0901-6002ZZ	Bearing	6002ZZ	1
54	10328	Gear Shaft		1
55	M1328-565	Key	5mmx65L	1
56	10081	Gear		1
57	M1312-S22	Retainer	S22	1
58	M0901-6002ZZ	Bearing	6002ZZ	1
59	10207	Bushing		1
60	M1401-M612	Bolt	M6x12L	1
61	10047	Washer		1
62	M1317004	Handle	3/8"	1
63	10085	Manual Feed Hand wheel		1
64	M1401-M614	Bolt	M6x14L	4
65	10084	Bushing		1
66	M0901-6204ZZ	Bearing	6204ZZ	1
67	M1328-612	Key	6mmx12L	1
68	10209	Sprocket		1
69	M1204005	Chain	25Hx70	3
70	M0901-6002ZZ	Bearing	6002ZZ	1
71	M1323019	Cup Oil	PT 1/8"x90°	1
72	10052	Lock Nut		1
73	M1607-AW04	Crown Washer	AW04	1
74	M0901-6004ZZ	Bearing	6004ZZ	1
75	10050	Gear		1
76	10049	Gear		1
77	M1328-720	Key	7mmx20L	1
78	10048	Gear Shaft		1
79	M1328-712	Key	7mmx12L	1
80	10051	Gear		1
81	M1312-S22	Retainer	S22	1
82	M0901-6004ZZ	Bearing	6004ZZ	1
83	M1312-S35	Retainer	S35	1
84	10056	Gear		1
85	10054	Gear		1
86	10055	Gear		1
87	10057	Gear		1
88	M0901-6004ZZ	Bearing	6004ZZ	1
89	M1607-AW04	Crown Washer	AW04	1
90	10052	Lock Nut		1
91	M0901-6004ZZ	Bearing	6004ZZ	1
92	10053	Gear Shaft		1
93	M1328-685	Key	6mmx85L	2
94	M1328-610	Key	6mmx10L	2
95	M0901-6007ZZ	Bearing	6007ZZ	1
96	10061	Washer		1
97	M1312-R62	Retainer	R62	1
98	M0901-6007ZZ	Bearing	6007ZZ	1
99	10060	Clutch Upper Gear		1
100	10059	Clutch Lower Gear		1
101	M0901-6007UU	Bearing	6007UU	1
102	M0801-P30	"O" Ring	P30	1
103	M0702038	Oil Seal	TC42x58x8	1

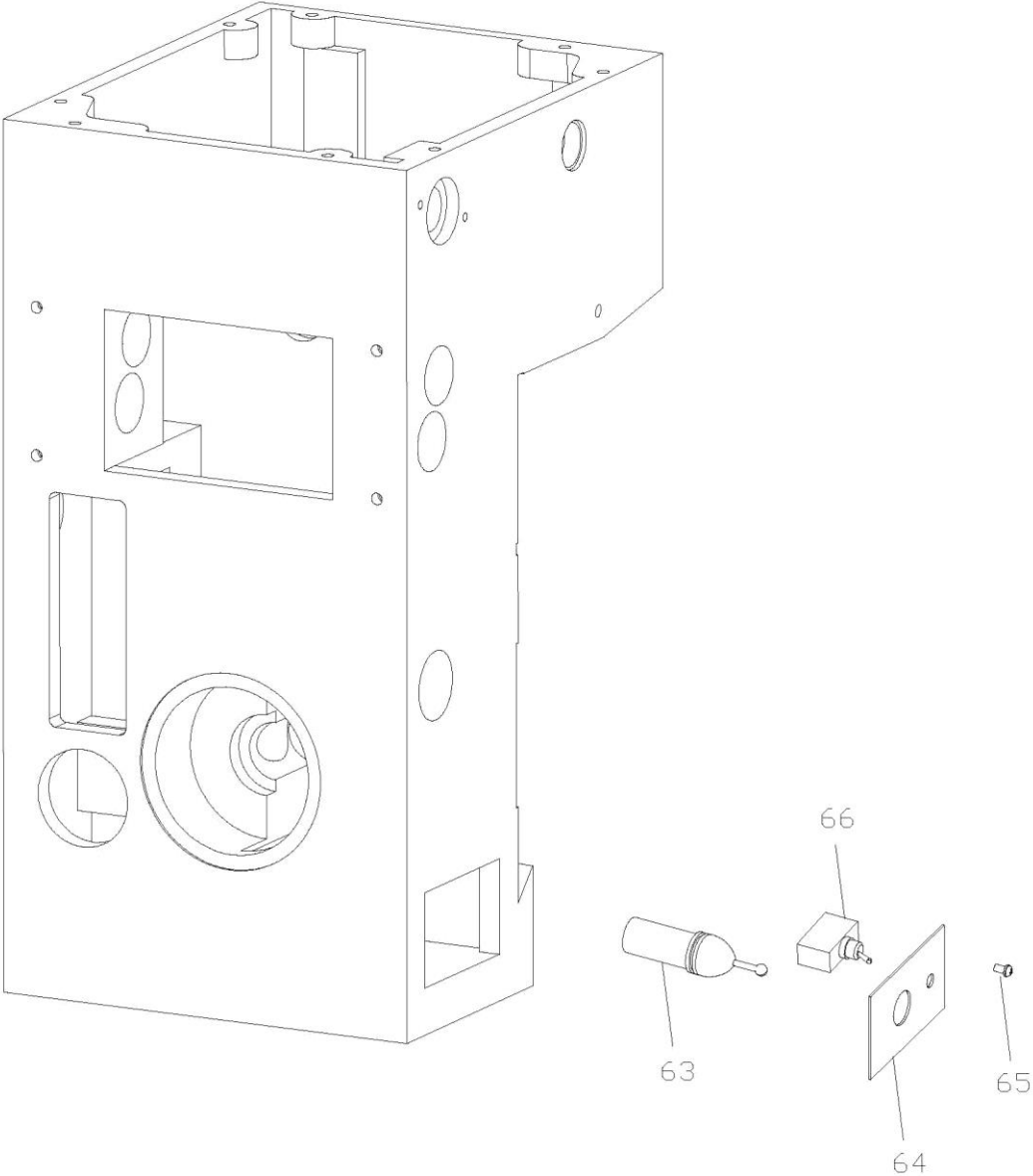
Index No.	Part No.	Description	Size	Q 'ty
104.....	10058	Spindle Shaft		1
105.....	10062	Worm		1
106.....	M1403-M66	Bolt	M6x6L	1
107.....	10122	Fixed Lock		1
108.....	M1401-M612	Bolt	M6x12L	1
109.....	10123	Washer		1
110.....	10211	Copper Key		1
111.....	M1317008.....	Knob	3/8" φ 30	2
112.....	10344	Feed Handle		2
113.....	M1305-550	Spring Pin	5mmx50L.....	2
114.....	10103	Nut		1
115.....	10342	Clutch Housing		1
116.....	10680	Spring		2
117.....	M1323026.....	Ball Steel	3/8"	2
118.....	10343	Cotter Pin.....		1
119.....	10358	Spring		1
120.....	10098	Dial		1
121.....	10340	Clutch Upper Gear		1
122.....	10335	Key		1
123.....	10341	Dial Seat		1
123-1	M1301-820	Pin	8mmx20L.....	1
124.....	M1312-S30	Retainer	S30.....	1
125.....	10339	Clutch		1
126.....	10338	Worm Gear		1
127.....	M1401-M614	Bolt	M6x14L	4
128.....	M0901-6006ZZ	Bearing	6006ZZ.....	1
129.....	10213	Gear Shaft		1
130.....	M1312-S24	Retainer	S24.....	1
131.....	10106	Hand Wheel Lock Nut		1
132.....	10345	Hand Wheel.....		1
133.....	M1328-512	Key	5mmx12L.....	1
134.....	10214	Pinion Shaft		1
135.....	10215	Gear		1
136.....	10108	Eccentric Bushing		1
137.....	M1401-M1030.....	Bolt	M10x30L	1
138.....	10212	Spindle		1
139.....	10088	Nut		1
140.....	M0905-RNA4911	Bearing	RNA4911.....	1
141.....	M0911-51111	Bearing	51111	1
142.....	M0909-32006	Bearing	32006	1
143.....	10090	Lock Nut		1
144.....	10210	Quill		1
144-1	10063	Set Screw		2
145.....	M1321002.....	Grease Nipple.....	PT1/8"	1
146.....	M1403-M68	Bolt	M6x8L	1
147.....	M1317005.....	Knob	5/16"	1
148.....	10072	Three Step Speed Change Lever.....		1
149.....	10111	Nut		1
150.....	10110	Lock Screw		1
151.....	M1401-M516	Bolt	M5x16L	1
152.....	10109	Set Block		1
153.....	M1403-M1016.....	Bolt	M10x16L	1

Index No.	Part No.	Description	Size	Q 'ty
154.....	10117	Feed Speed Selector		1
155.....	10679	Spring		1
156.....	M1323025.....	Ball Steel	5/16"	1
157.....	M1401-M1016.....	Bolt	M10x16L	4
158.....	10346	Gear Box Front Cover.....		1
159.....	10113	Feed Speed Change Gear		1
160.....	10114	Arm Rack.....		1
161.....	10347	Gear Shifter lever.....		1
162.....	10116	Plate		1
163.....	M1414006.....	Bolt	3/16"x3/8"L	4
164.....	10127	Copper Ball.....		1
165.....	M1403-M610	Bolt	M6x10L	1
166.....	M1323021.....	Gage Fuel Level		1
167.....	10319	Rod.....		1

Rear gear box Assembly I



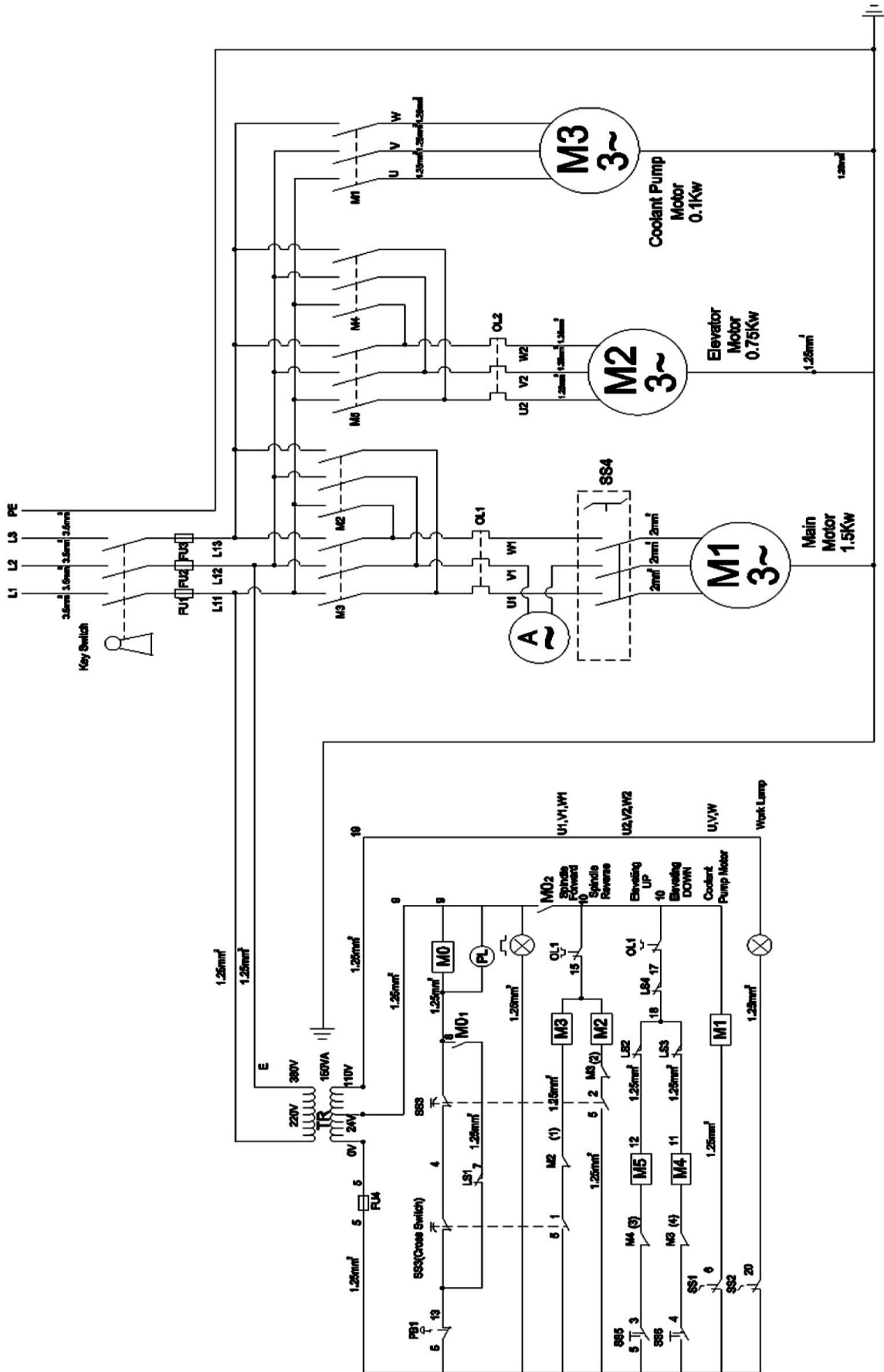
Rear gear box Assembly II



Rear gear box Assembly Part List

Index No.	Part No.	Description	Size	Q'ty
1	10204	Gear Box		1
2	10219	Aluminum Plate		1
3	10217	Bearing bracket		1
4	10218	Cam Shaft Sleeve		1
5	10220	Clamping Cam Shaft		1
6	10216	Bearing bracket		1
7	M1401-M1085	Bolt	M10x85L	2
8	10366	Aluminum Plate		1
9	10149	Feed Speed Selector		1
10	10365	Eccentric Shaft		2
11	M0901-6205ZZ	Bearing	6205ZZ	2
12	10362	Rod		2
13	10583	Adjusting Washer		2
14	M1401-M10110	Bolt	M10x110L	2
15	10583	Adjusting Washer		2
16	10362	Rod		2
17	M0901-6205ZZ	Bearing	6205ZZ	2
18	10368	Eccentric Shaft		2
19	M1403-M1010	Bolt	M10x10L	8
20	M1414001	Bolt	3/16"x1/2"L	4
21	10150	Clamping Lever		1
22	M1317007	Knob	1/2" (ψ38)	1
23	10222	Eccentric Shaft		1
23-1	M1401-M416	Bolt	M4x16L	1
24	10221	Shaft		1
24-1	M0924-IRT1015-1	Bearing Inner Ring	IRT1015-1	1
25	M1204003	Chain	25Hx94	1
26	10223	Spring Housing		1
26-1	10234	Aluminum Plate		1
26-2	M1401-M535	Bolt	M5x35L	4
27	10229	Adjustable Shaft Of Switch		1
27-1	10230	Adjustable Shaft Of Bushing		2
28	10228	Spring Shaft		1
29	10231	Spring		1
30	10227	Nut		1
31	10232	Cover		1
32	M1401-M614	Bolt	M6x14L	4
33	10233	Mounting Plate		1
34	M1401-M612	Bolt	M6x12L	2
35	M0901-6202ZZ	Bearing	6202ZZ	1
36	10224	Pulley		1
36-1	10154	Adapter of Chain		1
37	M1328-720	Key	7mmx20L	1
38	10225	Drive Shaft		1
39	M0901-6202ZZ	Bearing	6202ZZ	1
40	10226	Bearing Cover		1
41	M1401-M620	Bolt	M6x20L	2
63	JRD-1100R-E63	Spindle/Arm Switch		1
64	JRD-1100R-E64	Switch Plate		1
65	JRD-1100R-E65	Bolt	3/16"x3/8"L	4
66	JRD-1100R-E66	Work Lamp Switch		1

JRD-1100R...10000385T ... 3~400V, 50Hz



Electrical Parts List

Index No.	Part No.	Description	Size	Q'ty.
E1602001		Key Switch	XF 163B	1
E0703001-M1		Magnetic Contact	CN11 3a1b 24V	1
E0703002-M2		Magnetic Contact	CN18 24V	1
E0703002-M3		Magnetic Contact	CN18 24V	1
E0703001-M4		Magnetic Contact	CN11 3a1b 24V	1
E0703001-M5		Magnetic Contact	CN11 3a1b 24V	1
E0703001-M0		Magnetic Contact	CN11 3a1b 24V	1
E3101027-FU1		Fuse	10x38x20A	1
E3101027-FU2		Fuse	10x38x20A	1
E3101027-FU3		Fuse	10x38x20A	1
E3101027-FU4		Fuse	10x38x2A	1
E1801020-TR		Transformer	150VA	1
E1203001-SS1		Selector Switch	YK30 1A1B	1
E1604001-SS2		Selector Switch	SN1021	1
E0901021-SS3		Limit Switch	V-15-1E5	4
E1605001-SS3		Cross Switch		1
E1603001-SS4		Change Switch	A441CA10	1
B100006-SS4		Push button	ZB4-BA2+ZB4-BZ101	1
B100006-SS5		Push button	ZB4-BA2+ZB4-BZ101	1
E1618003-PB1		Emergency Push Button	YK30 1B	1
E0207017-OL1		Overload Relay	RHN 10/5.5~8.5	1
E0207014-OL2		Overload Relay	RHN 10/1.4~2.1	1
E0901006-LS1		Limit Switch	MJ2-1308R	1
E0901014-LS2		Limit Switch	MJ2-1308	1
E0901014-LS3		Limit Switch	MJ2-1308	1
E0901009-LS4		Limit Switch	MN 5311	1

	colour of strands	Litzenfarben	couleur des cordons
BK	black	schwarz	noir
WH	white	weiß	blanc
BU	blue	blau	bleu
YE	yellow	gelb	jaune
RD	red	rot	rouge
BN	brown	braun	brun
GY	grey	grau	gris
GNYE	green-yellow	grün-gelb	vert-jaune
OG	orange	orange	orange
VT	violet	violett	violet

	meaning of symbol	Bedeutung der Zeichen	interprétation
M	motor	Motor	moteur
SS1-SS2	switch	Schalter	interrupteur
PB1	emergency stop switch	Not-Aus Schalter	arrêt d'urgence
SS4-SS5	Push bottom	Aus-Schalter	bouton arrêt
FU1-FU4	fuse	Sicherung	fusible
TR	Transformer	Transformator	transformateur
SS4	reversing switch	Drehrichtungsschalter	commu. droite/gauche
M0-M5	contactor	Hauptschütz	contacteur
OL	overload cut-off	Überlastschuttschalter	déclencheur surcharge
LS	limit switch	Positionsendschalter	micro