



JUM-1253VHXL DRO

Milling Machine

50000862T 3~400V 50Hz

PARTS LIST



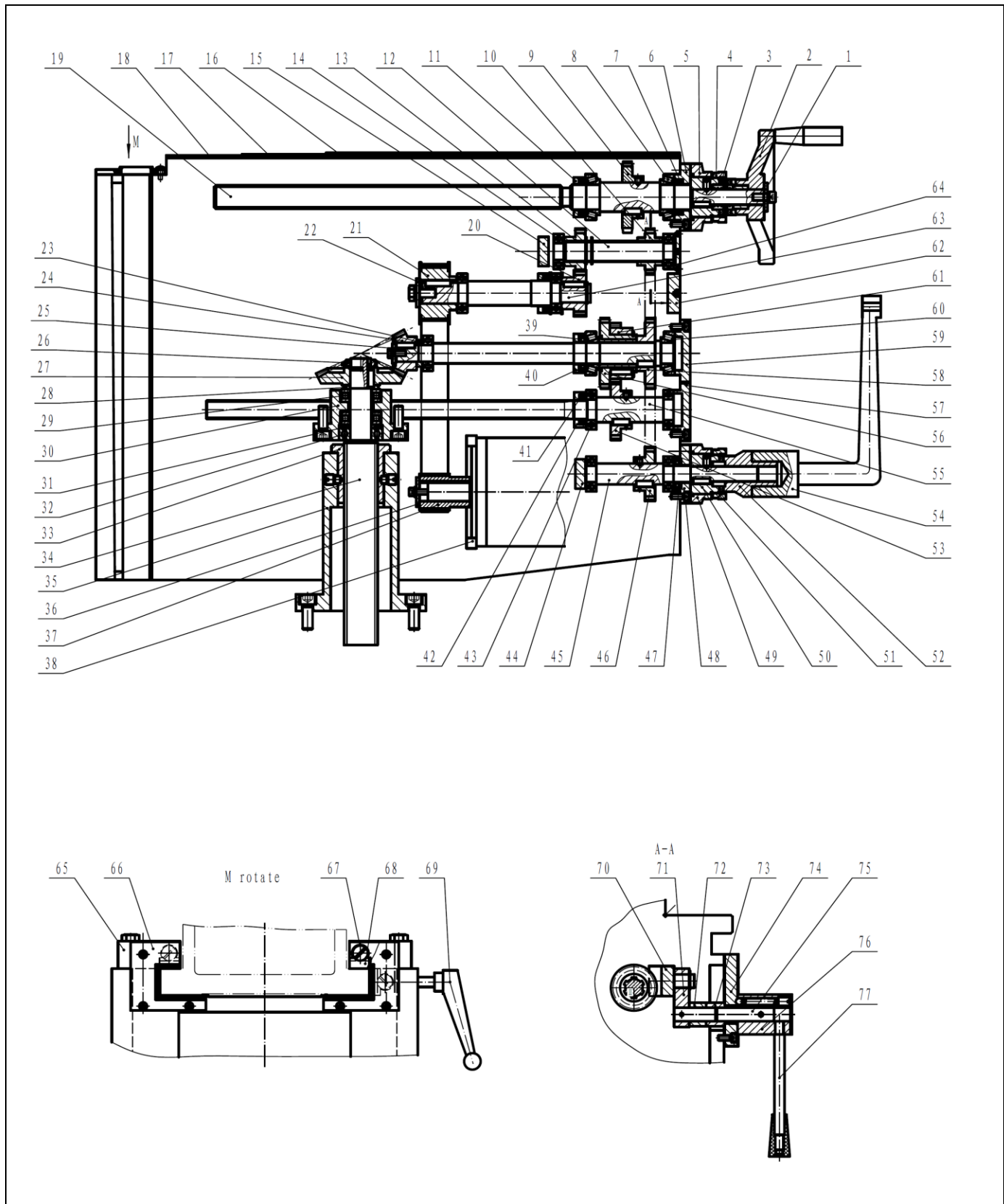
JPW Tool Group Hong Kong Limited

98 Granville Road, Tsimshatsui East, Kowloon, Hong Kong, PRC
www.jettools.com

Импортер в РФ: ООО «ИТА Технолджи»
105082, Москва, Переведеновский пер., д. 17
www.jettools.ru

Made in PRC / Сделано в КНР

Exploded View for JUM-1253VHXL DRO Milling Machine — Lifting Platform Assembly A

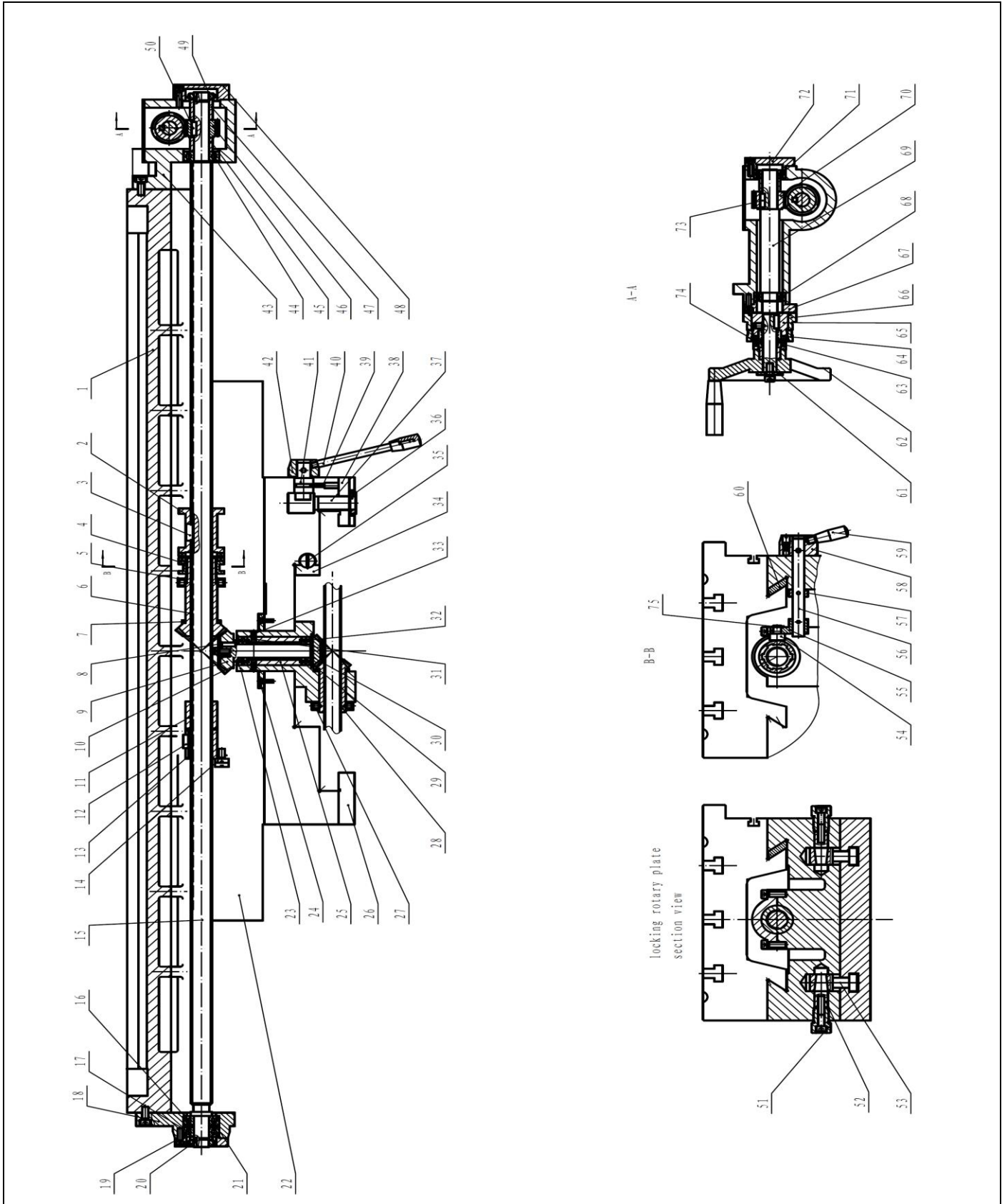


Part List for JUM-1253VHXL DRO Milling Machine – — Lifting Platform Assembly A

Index No.	Part No.	Description	Size	Qty.
1	JM125-A-001	Cushion		1
2	JM125-A-002	Hand Wheel		1
3	JM125-A-003	Coupling		1
4	JM125-A-004	Nut		1
5	JM125-A-005	Calibration Loop		1
6	JM125-A-006	Connection Disc (Link Plate)		1
7	JM125-A-007	Skeleton Oil Seal	FB30x42x7	3
8	JM125-A-008	Tapered Roller Bearing	32006	2
9	JM125-A-009	Gear		1
10	JM125-A-010	Gear		1
11	JM125-A-011	Sheath		1
12	JM125-A-012	Spline Shaft		1
13	JM125-A-013	Gear		1
14	JM125-A-014	Deep Groove Ball Bearing	6004	5
15	JM125-A-015	Block		1
16	JM125-A-016	Splash Guard		1
17	JM125-A-017	Splash Guard		1
18	JM125-A-018	Splash Guard		1
19	JM125-A-019	Horizontal Screw		1
20	JM125-A-020	Gear		1
21	JM125-A-021	Synchronous Pulley		1
22	JM125-A-022	Cushion		1
23	JM125-A-023	Cushion		1
24	JM125-A-024	Bevel Gear		1
25	JM125-A-025	Cushion		1
26	JM125-A-026	Round Nut	M24x1.5	1
27	JM125-A-027	Bevel Gear		1
28	JM125-A-028	Cushion		1
29	JM125-A-029	Thrust Ball Bearing	51205	2
30	JM125-A-030	Flange Plate		1
31	JM125-A-031	Cushion		1
32	JM125-A-032	Deep Groove Ball Bearing	6205	1
33	JM125-A-033	Lifting Nut		1
34	JM125-A-034	Lifting Screw		1
35	JM125-A-035	Sleeve		1
36	JM125-A-036	Cushion		1
37	JM125-A-037	Synchronous Pulley		1
38	JM125-A-038	Flange Plate		1
39	JM125-A-039	Skeleton Oil Seal	FB25x40x7	1
40	JM125-A-040	Sheath		1
41	JM125-A-041	Skeleton Oil Seal	FB22x35x7	
42	JM125-A-042	Sheath		1
43	JM125-A-043	Deep Groove Ball Bearing	6005	4
44	JM125-A-044	Block		1
45	JM125-A-045	Axis	FB20x35x7	1
46	JM125-A-046	Gear		1
47	JM125-A-047	Skeleton Oil Seal		1
48	JM125-A-048	Flange Plate		1
49	JM125-A-049	Calibration Loop		1
50	JM125-A-050	Coupling		1
51	JM125-A-051	Nut		1
52	JM125-A-052	Coupling		1
53	JM125-A-053	Gear		1
54	JM125-A-054	Lifting Crank		1
55	JM125-A-055	Axis		1
56	JM125-A-056	Gear		1
57	JM125-A-057	Flange Plate		1
58	JM125-A-058	Gear		1
59	JM125-A-059	Flange Plate		1
60	JM125-A-060	Tapered Roller Bearing	30205	2
61	JM125-A-061	Gear		1

62	JM125-A-062	Block	1
63	JM125-A-063	Axis	1
64	JM125-A-064	Block	1
65	JM125-A-065	Pressing Plate	2
66	JM125-A-066	Scraping Crumbs Plate	2
67	JM125-A-067	Screw	3
68	JM125-A-068	Rack	3
69	JM125-A-069	Lock Handle	2
70	JM125-A-070	Shifting Block	1
71	JM125-A-071	Swing Arm	1
72	JM125-A-072	Bush	1
73	JM125-A-073	Sheath	1
74	JM125-A-074	Cover	1
75	JM125-A-075	Axis	1
76	JM125-A-076	Handle Seat	1
77	JM125-A-077	Handle	1

Exploded View for JUM-1253VHXL DRO Milling Machine-- Table Assembly B

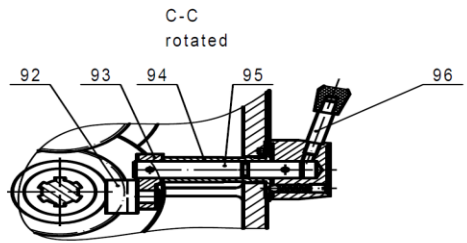
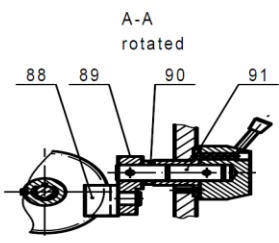
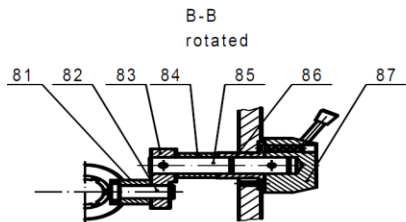
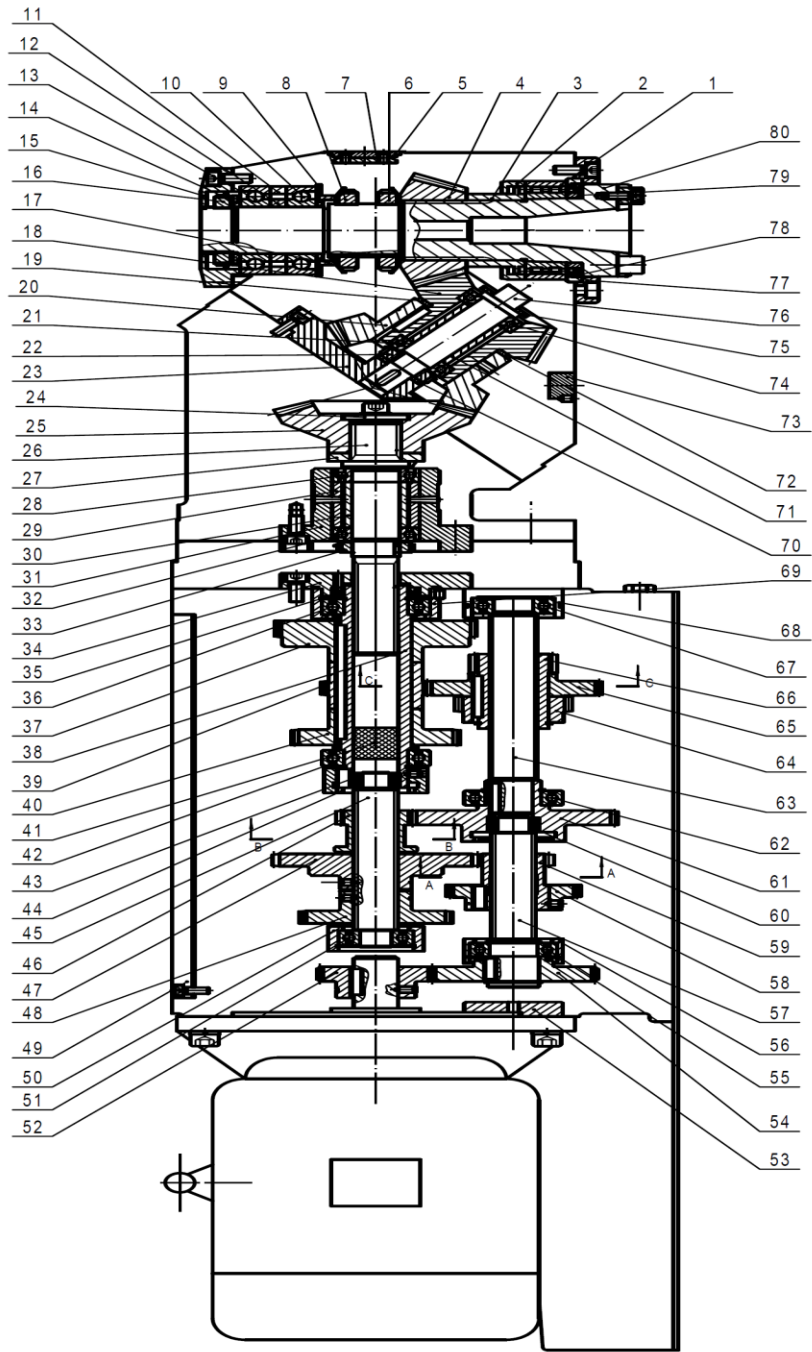


Part List for JUM-1253VHXL DRO Milling Machine – Table Assembly B

Index No.	Part No.	Description	Size	Qty.
1	JM125-B-001	Work Table		1
2	JM125-B-002	Clutch		1
3	JM125-B-003	Keyway		1
4	JM125-B-004	Clutch		1
5	JM125-B-005	Sheath		1
6	JM125-B-006	Bevel Gear		1
7	JM125-B-007	Adjustable Pad		1
8	JM125-B-008	Pad		1
9	JM125-B-009	Bevel Gear		1
10	JM125-B-010	Deep Groove Ball Bearing	6004	1
11	JM125-B-011	Vertical Nut		1
12	JM125-B-012	General Flat Key	6x20	1
13	JM125-B-013	Vertical Screw		1
14	JM125-B-014	Screw		2
15	JM125-B-015	Vertical Screw		1
16	JM125-B-016	Angular Contact Ball Bearing	7204AC	1
17	JM125-B-017	Angular Contact Ball Bearing	7204AC	1
18	JM125-B-018	Bracket		1
19	JM125-B-019	Flange Plate		1
20	JM125-B-020	Round Nut	M20x1.5	1
21	JM125-B-021	Pad		1
22	JM125-B-022	Rotary Disk		1
23	JM125-B-023	Bracket		1
24	JM125-B-024	Flange Plate		1
25	JM125-B-025	Bush		1
26	JM125-B-026	Platen		1
27	JM125-B-027	Sheath		1
28	JM125-B-028	Bevel Gear		1
29	JM125-B-029	Adjustable Pad		1
30	JM125-B-030	Bevel Gear		1
31	JM125-B-031	Taper Pin	A6x16	2
32	JM125-B-032	Deep Groove Ball Bearing	6004	1
33	JM125-B-033	Adjustable Pad		1
34	JM125-B-034	Lateral Rack		1
35	JM125-B-035	Screw		1
36	JM125-B-036	Round Nut	M20x1.5	1
37	JM125-B-037	Locking Shaft		1
38	JM125-B-038	Platen		1
39	JM125-B-039	Slotted Set Screws With Long Dog Point	M5x16	
40	JM125-B-040	Handle Shaft		1
41	JM125-B-041	Eccentric Shaft		1
42	JM125-B-042	Handle Seat		1
43	JM125-B-043	Bracket		1
44	JM125-B-044	Deep Groove Ball Bearing	6204-2RZ	1
45	JM125-B-045	Bush		1
46	JM125-B-046	Helical Gear		1
47	JM125-B-047	Bush		1
48	JM125-B-048	Flange Plate		1
49	JM125-B-049	Round Nut	M20x1.5	1
50	JM125-B-050	General Flat Key	A6x20	1
51	JM125-B-051	Lock Nut		4
52	JM125-B-052	Axis Pin		4
53	JM125-B-053	Locking Shaft		4
54	JM125-B-054	Shifting Block		1
55	JM125-B-055	Rocker Arm		1
56	JM125-B-056	Axis		1
57	JM125-B-057	Sheath		1
58	JM125-B-058	Handle Seat		1

59	JM125-B-059	Handle Bar		1
60	JM125-B-060	Rack		1
61	JM125-B-061	Pad		1
62	JM125-B-062	Hand Wheel		1
63	JM125-B-063	Clutch		1
64	JM125-B-064	Hand Wheel		1
65	JM125-B-065	Clutch		1
66	JM125-B-066	Calibration Loop		1
67	JM125-B-067	Flange Plate		1
68	JM125-B-068	Deep Groove Ball Bearing	6004-2RZ	1
69	JM125-B-069	Axis		
70	JM125-B-070	Helical Gear		
71	JM125-B-071	Deep Groove Ball Bearing	6004-2RZ	1
72	JM125-B-072	Flange Plate		
73	JM125-B-073	General Spring	A6x20	1
74	JM125-B-074	Compression Spring		1
75	JM125-B-075	Retainers For Shaft-A-Type	10	

Exploded View for JUM-1253VHXL DRO Milling Machine – Tool RAM box & Milling Head Assembly C



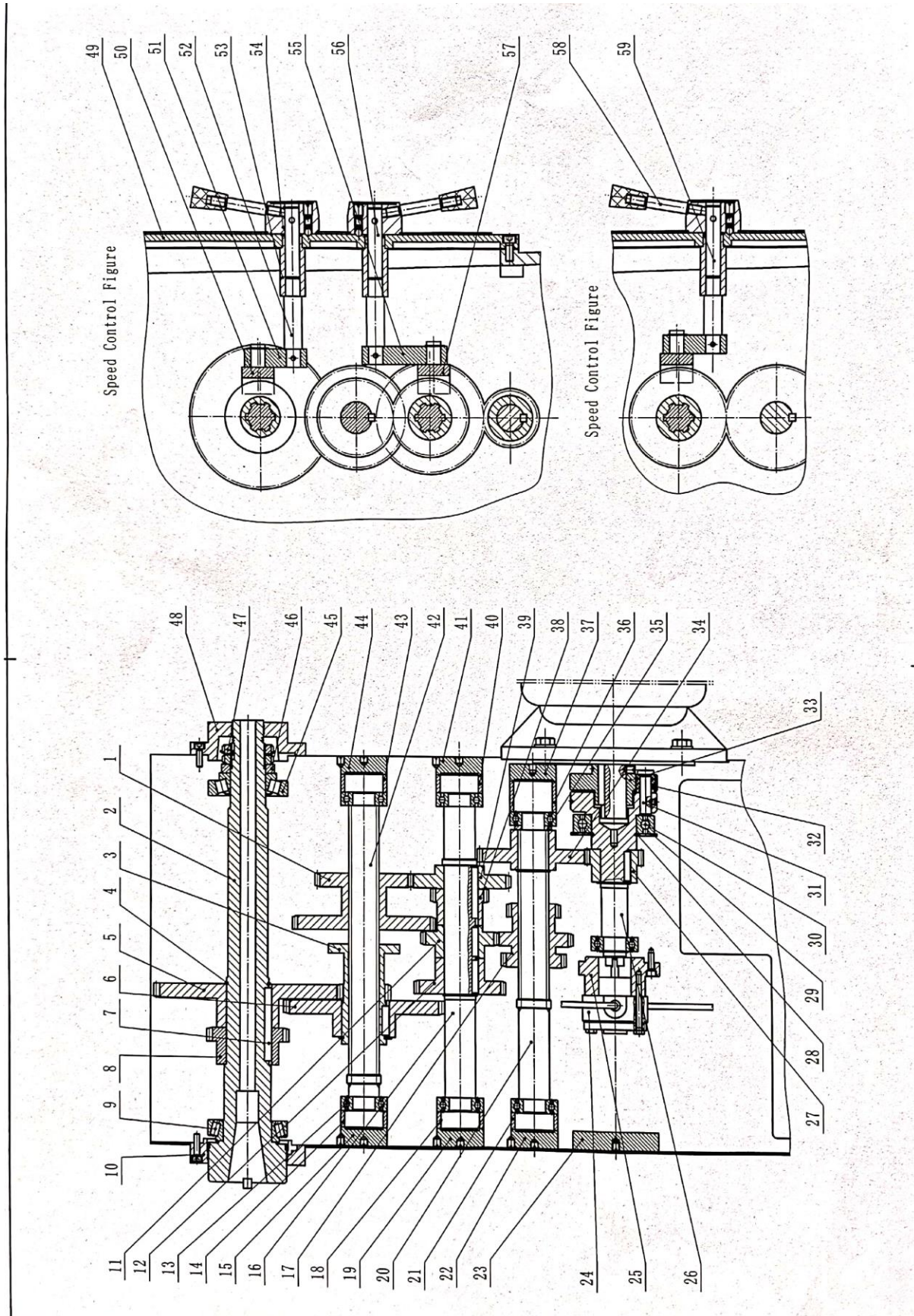
Part List for JUM-1253VHXL DRO Milling Machine – Tool RAM box & Milling Head Assembly C

Index No.	Part No.	Description	Size	Qty.
1	JM125-C-001	Conical double row cylindrical bearings	NN3012K/P5	1
2	JM125-C-002	cushion		1
3	JM125-C-003	sheath		1
4	JM125-C-004	bevel gear		1
5	JM125-C-005	cover		1
6	JM125-C-006	cushion		1
7	JM125-C-007	round nut	M52x1.5	1
8	JM125-C-008	round nut	M52x1.5	1
9	JM125-C-009	hole collar	85	1
10	JM125-C-010	angular contact ball bearing	7209AC/P5	1
11	JM125-C-011	cushion		1
12	JM125-C-012	cushion		1
13	JM125-C-013	cushion		1
14	JM125-C-014	cushion		1
15	JM125-C-015	angular contact ball bearing	7209AC/P5	1
16	JM125-C-016	round nut	M45x1.5	1
17	JM125-C-017	flange plate		1
18	JM125-C-018	bevel gear		1
19	JM125-C-019	adjustable cushion		1
20	JM125-C-020	bevel gear		1
21	JM125-C-021	angular contact ball bearing	7005AC	1
22	JM125-C-022	round nut	M25x1.5	1
23	JM125-C-023	flange plate		1
24	JM125-C-024	cushion		1
25	JM125-C-025	bevel gear		1
26	JM125-C-026	spline shaft		1
27	JM125-C-027	cushion		1
28	JM125-C-028	angular contact ball bearing	7006AC	1
29	JM125-C-029	sheath		1
30	JM125-C-030	sheath		1
31	JM125-C-031	flange plate		1
32	JM125-C-032	angular contact ball bearing	7006AC	1
33	JM125-C-033	round nut	M30x1.5	1
34	JM125-C-034	flange plate		1
35	JM125-C-035	skeleton oil seal	FB40x55x8	1
36	JM125-C-036	deep groove ball bearing	6008	1
37	JM125-C-037	spline housing		1
38	JM125-C-038	drip pan		1
39	JM125-C-039	deep groove ball bearing	6009	1
40	JM125-C-040	gear		1
41	JM125-C-041	gear		1
42	JM125-C-042	gear		1
43	JM125-C-043	block		1
44	JM125-C-044	deep groove ball bearing	6008	1
45	JM125-C-045	deep groove ball bearing	61903	2
46	JM125-C-046	internal gear		1
47	JM125-C-047	spline shaft		1
48	JM125-C-048	gear		1
49	JM125-C-049	gear		1
50	JM125-C-050	gear		1
51	JM125-C-051	sheath		1
52	JM125-C-052	deep groove ball bearing	6204	1
53	JM125-C-053	cover		1
54	JM125-C-054	gear		1
55	JM125-C-055	block		1
56	JM125-C-056	gear		1
57	JM125-C-057	deep groove ball bearing	6006	1
58	JM125-C-058	sheath		

Part List for JUM-1153VHXL DRO Milling Machine – Tool RAM box & Milling Head Assembly C

Index No.	Part No.	Description	Size	Qty.
59	JM125-C-059	spline shaft		
60	JM125-C-060	gear		
61	JM125-C-061	gear		
62	JM125-C-062	deep groove ball bearing	61804	2
63	JM125-C-063	gear		1
64	JM125-C-064	deep groove ball bearing	6007	1
65	JM125-C-065	spline shaft		1
66	JM125-C-066	gear		1
67	JM125-C-067	gear		1
68	JM125-C-068	gear		1
69	JM125-C-069	deep groove ball bearing	6205	1
70	JM125-C-070	sheath		1
71	JM125-C-071	oil flinger		1
72	JM125-C-072	sheath		1
73	JM125-C-073	block		1
74	JM125-C-074	cushion		1
75	JM125-C-075	sheath		1
70	JM125-C-070	sheath		1
76	JM125-C-076	cushion		1
77	JM125-C-077	block		1
78	JM125-C-078	angular contact ball bearing	7006AC	1
79	JM125-C-079	adjustable cushion		1
80	JM125-C-080	axis		1
81	JM125-C-081	flange plate		1
82	JM125-C-082	cushion		1
83	JM125-C-083	cushion		1
84	JM125-C-084	spindle		1
85	JM125-C-085	shifting block		1
86	JM125-C-086	axis		1
87	JM125-C-087	swing arm		1
88	JM125-C-088	sheath		1
89	JM125-C-089	axis		1
90	JM125-C-090	sheath		3
91	JM125-C-091	handle seat		3
92	JM125-C-092	shifting fork		1
93	JM125-C-093	swing arm		1
94	JM125-C-094	sheath		1
95	JM125-C-095	axis		1
96	JM125-C-096	shifting fork		1
97	JM125-C-097	swing arm		1
98	JM125-C-098	sheath		1
99	JM125-C-099	axis		1
100	JM125-C-100	handle		3

Exploded View for JUM-1253VHXL DRO Milling Machine – Horizontal spindle Assembly D



Part List for JUM-1253VHXL DRO Milling Machine – Horizontal spindle Assembly D

Index No.	Part No.	Description	Size	Qty.
1	JUM1253-D-01	Gear		1
2	JUM1253-D-02	Spindle		1
3	JUM1253-D-03	Gear		1
4	JUM1253-D-04	Shaft Collar	48	1
5	JUM1253-D-05	Gear		1
6	JUM1253-D-06	Gear		1
7	JUM1253-D-07	Common Flat Key	10x80	1
8	JUM1253-D-08	Gear		1
9	JUM1253-D-09	Tapered Roller Bearing	32011/P6	1
10	JUM1253-D-10	Flange Plate		1
11	JUM1253-D-11	Gear		1
12	JUM1253-D-12	Gear		1
13	JUM1253-D-13	Deep Groove Ball Bearing	6205	1
14	JUM1253-D-14	Sheath		1
15	JUM1253-D-15	Block		1
16	JUM1253-D-16	Axis		1
17	JUM1253-D-17	Triple Gear		1
18	JUM1253-D-18	Sheath		1
19	JUM1253-D-19	Block		1
20	JUM1253-D-20	Axis		1
21	JUM1253-D-21	Sheath		1
22	JUM1253-D-22	Block		1
23	JUM1253-D-23	Block		1
24	JUM1253-D-24	Oil Pump		1
25	JUM1253-D-25	Flange Plate		1
26	JUM1253-D-26	Axis		1
27	JUM1253-D-27	Gear		1
28	JUM1253-D-28	Shaft Collar	50	1
29	JUM1253-D-29	Hole Collar	90	1
30	JUM1253-D-30	Deep Groove Ball Bearing	6210	1
31	JUM1253-D-31	Pin Roll		1
32	JUM1253-D-32	Ring		1
33	JUM1253-D-33	Flange Plate		1
34	JUM1253-D-34	Gear		1
35	JUM1253-D-35	Cushion		1
36	JUM1253-D-36	Sheath		1
37	JUM1253-D-37	Block		1
38	JUM1253-D-38	Gear		1
39	JUM1253-D-39	Gear		1
40	JUM1253-D-40	Sheath		1
41	JUM1253-D-41	Block		1
42	JUM1253-D-42	Axis		1
43	JUM1253-D-43	Sheath		1
44	JUM1253-D-44	Block		1
45	JUM1253-D-45	Tapered Roller Bearing	30308/P6	1
46	JUM1253-D-46	Cushion		1

Wiring Diagram for JUM-1253VHXL DRO 50000862T 3~400V 50Hz

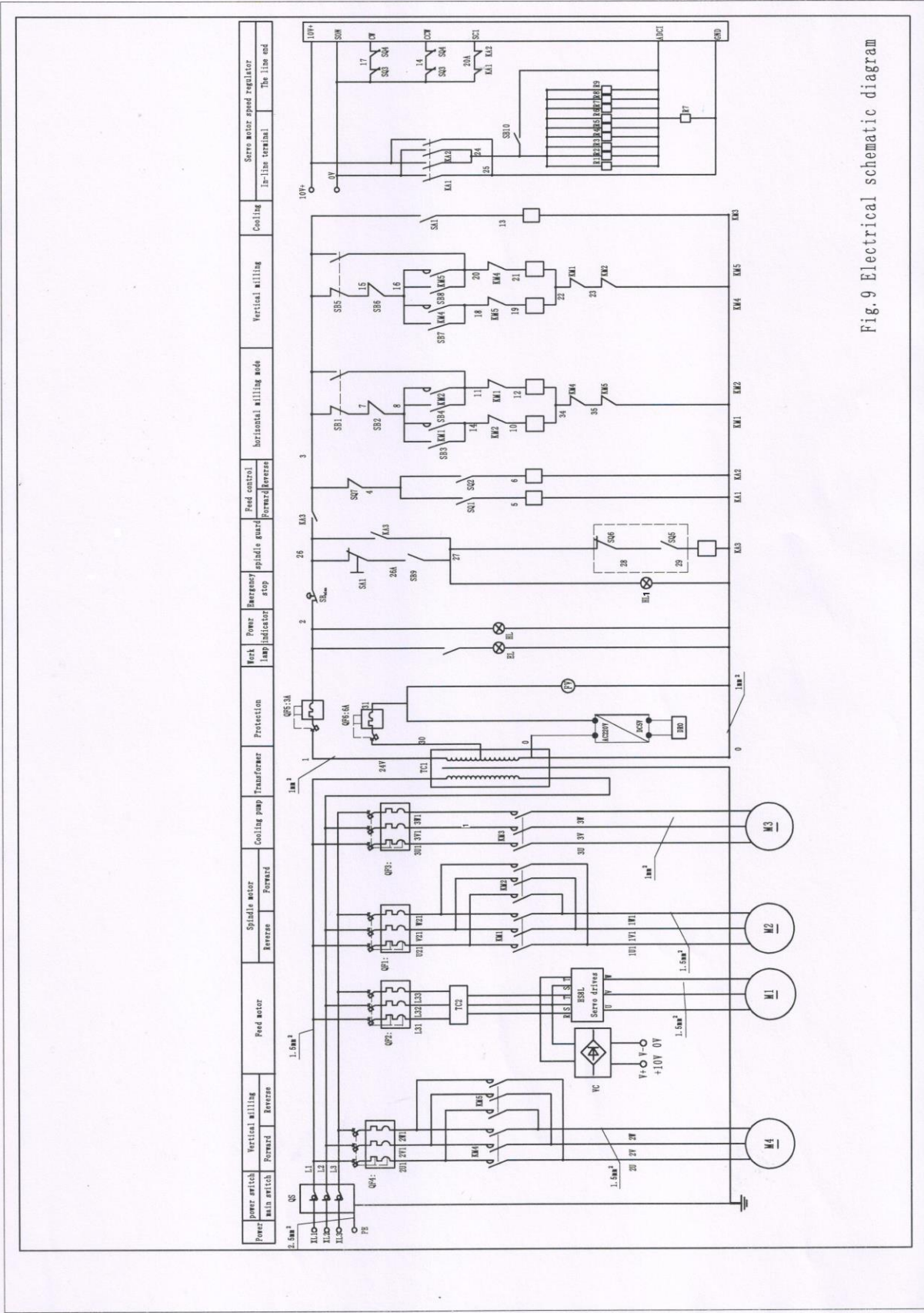


Fig.9 Electrical schematic diagram

Packing List --Main machine, Accessories and tools

No.	Description	Size	Qty.	Remarks
1	Milling machine		1	
2	ISO40 sets milling chuck	7: 24 ISO40	1	
3	Horizontal milling arbor	7:24 ISO40 Ø 27mm	1	
4	Draw bar	M16(vertical, horizontal)	1	
5	Machine vise		1	
6	Allen Wrench	5、 6、 10、 12	1	
7	Double-ended wrench	17*19	1	
8	Double-ended wrench	22*24	1	
9	Double-ended wrench	32*36	1	
10	ISO40 Taper shank type cutter bar	Ø32mm		
11	Nut	M16	2	
12	Washer	16	2	
13	Operation manual		1	
14	Precision inspection sheet		1	
15	Packing list		1	